

# PRODUCT CATALOGUE WITH ACCESSORIES

**Machinery & Tools**



[www.robels.com](http://www.robels.com)



# MACHINERY & TOOLS. VERSATILE. PRACTICAL. SMART.



Photo: Uhlenhut

Since 1901 ROBEL has developed, manufactured and supplied track construction machines with a claim for safety and economic efficiency. This is the incentive for around 570 employees at the ROBEL premises in Freilassing, Germany, to create powerful machines and systems and deliver good service. For the construction and maintenance of railway infrastructure systems all over the world.

## **Strong client cooperation.**

Only those who listen will find out about the requirements of worksite operations. With an international network of representations and service partners ROBEL is at the heart of local markets. As a result, we develop safe, high-quality and user-friendly products.

## **Powerful machines.**

Knowledge paves the way to innovation. ROBEL utilises its experience and ingenuity to convert new technologies - also from other areas - into needs-oriented solutions for track construction. Tested on the in-house track, certified in the area of use.

## **Good service.**

Professional customer service keeps machines operational where results are key. The client decides how close the cooperation with ROBEL is. ROBEL delivers reliably and on time. From the spare part supply through to all-round service.

## **Machines & Equipment at a Glance**

Whatever the challenge in track construction, ROBEL has the solution. The ROBEL catalogue for Machines & Equipment catalogue provides you with a swift overview of the product portfolio of our hand guided machines.

ROBEL Systems & Vehicles you can find in a separate product catalogue and as an online version on [www.robelsystems.com](http://www.robelsystems.com)

## **Certified performance**

- Certified acc. To ISO 9001:2015 quality management system
- Certified acc. To ISO 14001 environmental management system
- Silver Level EcoVadis CSR-Rating
- Welding of Railway Vehicles and Components acc. To EN 15085-2
- Adhesive bonding on rail vehicles and parts acc. To DIN 6701
- Q1 Supplier of Deutsche Bahn AG
- TransQ Qualification (Scandinavia)
- RISQS Qualification UK

## **Great on Track. Great on the web.**

The ROBEL website informs constantly about new developments in our product range and provides a digital version of these catalogue available for download.

Our sales team in Freilassing as well as our representatives worldwide are at your full disposal for any questions that might arise.

**ROBEL. Great on Track.**



<b>BATTERY TECHNOLOGY</b>	<b>6-10</b>
<b>DRILLING</b>	<b>11-18</b>
<b>CUTTING</b>	<b>19-23</b>
<b>GRINDING</b>	<b>24-38</b>
<b>STRESSING/PULLING/BENDING</b>	<b>39-50</b>
<b>WRENCHING/CLIPPING</b>	<b>51-69</b>
<b>LIFTING/LOADING/TRANSPORTING</b>	<b>70-84</b>
<b>TAMPING</b>	<b>85-88</b>
<b>ENERGY/LIGHTING</b>	<b>89-95</b>
<b>SECURING/MEASURING</b>	<b>96-106</b>
<b>EQUIPMENT/TOOLS</b>	<b>107-110</b>
<b>SERVICE</b>	<b>113</b>
<b>ROBEL NETWORK WORLDWIDE</b>	<b>114-117</b>





# TABLE OF CONTENTS

## BATTERY TECHNOLOGY

RODRILL B Light Battery powered Rail Drilling Machine 10.20	08
ROSAW B Battery powered Rail Band Saw 12.20 MSB	08
ROMPACT B Battery powered Portable Impact Wrench 30.20	09
ROTAMP B Light Battery powered Vertical Tamper 62.20L	09
ROTRACT B Spike Battery Powered Spike Puller 33.20	10

## DRILLING

RODRILL Rail Drilling Machine 10.35	12
RODRILL Rail Drilling Machine 10.40	14
ROBORE Portable Sleeper Drilling Machine 11.12	17
ROBORE Sleeper Drilling Machine 11.64	18

## CUTTING

ROSAW Rail Band Saw 12.72 MSB	20
ROCUT Rail Cutter 13.70	22
ROCUT Rail Cutter 13.86	23

## GRINDING

ROGRIND Rail Web Grinding Machine 13.03	25
ROGRIND Rail Head Grinding Machine 13.45 SKS	26
ROGRIND Welding Joint Grinding Machine 13.45 WBF	28
ROGRIND Rail Head Profile Grinding Machine 13.48	30
ROGRIND HF HEAD Hybrid Rail Head Profile Grinding Machine 13.49	32
ROGRIND Switch Grinding and Deburring Machine 13.61	34
ROGRIND Rail and Switch Grinding Machine 13.62	35
ROTRIM Hydraulic Weld Trimmer 14.10	37
ROFACE Rail Milling Machine 16.01	38

## STRESSING/PULLING/BENDING

ROBEND PLANT Roller-type Rail Bending Machine 00.25	40
ROBEND Hydraulic Switch Blade Lining Device 22.28	41
ROBEND Hydraulic Rail Bender 22.38	42
ROGAUGE Gauge Bar 24.06	43
ROSHOE Rail Pulling Shoe 24.08	43
ROPULL Hydraulic Rail Pulling and Pushing Device 24.12	44
ROSTRESS Hydraulic Modular Rail Stressor 24.70	45
ROCARRY Rail Carrying Roller 25.16	47
ROLAX Rail De-Stressing Machine 26.01	48
ROHEAT Rail Heater 66.01	49

## WRENCHING/CLIPPING

ROMPACT Portable Impact Wrench 30.09	52
ROMPACT Portable Impact Wrench 30.10	53
ROWRENCH Precision Power Wrench 30.73 PSM	54
ROWRENCH 8-Spindle Precision Wrenching Unit 30.75	56
ROWRENCH Universal Power Wrench 30.82 RKS	57
ROWRENCH Universal Power Wrench 30.82 HKS	59
ROWRENCH Combined Power Wrench and Drilling Machine 30.83	61
ROWRENCH Servo-controlled Bolting Technology 30.90	63
ROBOLT Fish Bolt Spanner 31.82	64
ROTORQUE Torque Meter 86.12	64
ROTORQUE+ Torque Meter 86.12+	64
ROCLIP Clipping Machine 34.01	65
ROCLIP Clipping Device 34.90	66
ROTOOL Fish Bolt Spanner 35.01	67
ROTOOL Fish Bolt Spanner 35.02	67
ROTOOL Socket Wrench 36.01/02/03/04	68
ROTOOL Support Lever 38.01	68
Sockets one-piece and articulated	69

## LIFTING/LOADING/TRANSPORTING

ROLIFT Rail Lifting Device 40.05	71
ROCARRY Rail Carrying Tongs 42.02	71
ROCARRY Rail Carrying Roller Tongs with Locking Bolt 42.10	72
ROCARRY Rail Carrying Tongs with Safety Latch 42.11	72
ROCARRY Rail Carrying Tongs with Suspension Eye (crane hook securing) and Locking Device 42.22	72
ROMOVE Rail Mover 43.02	73
ROMOVE Rail Mover 43.03	73
ROTHREAD Rail Threader 43.32	75
ROTOOL Wooden Sleeper Carrying Tongs 44.17	76
ROTOOL Concrete Sleeper Carrying Tongs 44.20	77
ROJACK Ratchet Track Jack with Safety Crank Handle 46.43/45/47/50	77
ROJACK Mechanical Track Jack 47.14	78
ROJACK Hydraulic Track Jack 47.17	78

ROALIGN Hydraulic Track Lifting Machine with Slewing Device 47.230	79
ROLLY Light Track Trolley 51.12	80
ROLLY Transporting Device 52.16	81
ROTOW Towing Device 52.18	82
ROLLY Track Trolley 52.30	83
ROCOUPLE Tow Bars 58.03/58.62	83
ROMOVER Wagon Mover 59.08	83
ROSTOP Drag Shoe 59.10	84
RORERAIL Rerailing Frog 59.12	84
ROTOOL Rail Tilting Device 68.03	84
ROLIFT Sleeper Lifting Device 69.20	84

## TAMPING

ROTAMP Electrical Tamping Unit 62.04	86
ROTAMP Vertical Tamper Series 62.05	87

## ENERGY/LIGHTING

ROPOWER Generator 70.01	90
ROPOWER HB Hybrid Drive Unit 70.02	91
ROPOWER 110/230/400 Power Supply 70.03	91
ROPOWER HD Hydraulic Power Unit 76.01	92
ROPOWER P4 DUAL HD High Pressure Power Pack 76.02	92
ROPOWER B DUAL High Pressure Power Pack 76.20	93
ROLIGHT Worksite Illumination System 73.06	94

## SECURING/MEASURING

ROCLAMP Rail Clamp 68.05	97
ROFENCE Worksite Fencing System 69.30	99
ROMEAS Versine Measuring Device 82.05	100
ROMEAS Versine Measuring Device 82.06	100
ROMEAS Level Sighting and Levelling Unit 82.07	100
ROMEAS Track Square 82.11	101
ROMEAS SGauge Switch Gauge and Superelevation Measuring Device 83.07	102
ROMEAS SGauge Compact Switch Gauge and Superelevation Measuring Device 83.07	102
ROMEAS Point Fixed Point Measuring Device 83.15	103
ROMEAS Gap Joint Gap Measuring Device 83.18	103
ROMEAS Wear Stock Rail and Switch Blade Gauge 83.20	103
ROMEAS TGauge+ Track Gauge and Superelevation Measuring Device 83.37	103
ROMEAS TGauge+ Track Gauge and Superelevation Measuring Device Compact 83.37	104
ROMEAS Digi SGauge Digital Switch Gauge and Superelevation Measuring Device 83.50	104
ROMEAS Plat Platform Clearance Gauge 83.87	105
ROMEAS Head Rail Head Wear Measuring Instrument 85.01	105
ROMEAS Frog Measuring Gauge 85.02	105
ROMEAS Wheel Rail Measuring Roller 85.05	106
ROMEAS Structure Track Spacing Instrument 85.07	106
ROMEAS Temp Rail Thermometer 85.20	106

## EQUIPMENT/TOOLS

ROTOOL Punch Drift Punch 69.01	108
ROTOOL Crow Crow Bar 69.02	108
ROTOOL Hammer Hammer 69.03	108
ROTOOL Ram Track Ram 69.04	108
ROTOOL Pick Tamping Pick 69.05	108
ROTOOL Sleeper Sleeper Hammer 69.06	108
ROTOOL Fork Ballast Fork 69.07	109
ROTOOL Lever Points Lever 69.08	109
ROTOOL Shovel Shovel made of Steel Sheet 69.09	109
ROTOOL Broom Switch Broom 69.10	109
ROTOOL Adze Adze 69.11	109
ROTOOL Chisel Cold Chisel 69.12	109
ROHORN Single Single-Tone Signal Horn 69.13	110
ROSIGN Stop Disc 69.14	110
ROHORN Multi Multi-Tone Signal Horn 69.15	110
ROTOOL Eject Clip Bolt Ejecting Device 69.16	110
ROTOOL Extract Extraction Socket 69.18	110
Torque Wrench	110

SERVICE	113
---------	-----

ROBEL NETWORK WORLDWIDE	114
-------------------------	-----



# BATTERY TECHNOLOGY



Battery series





**Powerful battery technology meets reliable mechanics.  
Clean, quiet and effective working.**

#### ITS BENEFITS. YOUR BENEFITS.

##### **Compact. Practical. Ergonomic.**

- Battery packs, charger and machines can be combined
- Clearly visible charge indicator

##### **Quiet. Zero emissions. Clean.**

- Low noise emissions in line with noise protection regulations for urban areas
- No exhaust gases, unpleasant smells or pollution

##### **Maintenance-free & cost-efficient**

- Maintenance-free battery and charger
- Machine is ready to use straight away



Accessoires: ROCHARGER

TECHNICAL SPECIFICATIONS	ROBATTERY 71.01	ROCHARGER 71.11
	BATTERY	CHARGER
Output		250 W
Charging period		approx. 3 - 4 hours
Voltage	43 V	primary 100 - 240 V secondary 36 - 49.8 V
Battery capacity	12.9 Ah	
Energy content	700 Wh	
Dimensions (L x W x H)	325 x 140 x 150 mm	340 x 200 x 140 mm
Weight	~6.2 kg	~3.5 kg



**Easy and efficient drilling of rails.**

### ITS BENEFITS. YOUR BENEFITS.

#### Short drilling time, reliable result

- Drilling time about 30-60 seconds, depending on execution
- LED display shows the engine load

#### Simple and flexible use

- One-man operation
- Manual feed
- Universal operation due to different rail profile patterns
- Low vibration operation
- LED display for illumination of the work area

#### Coolant

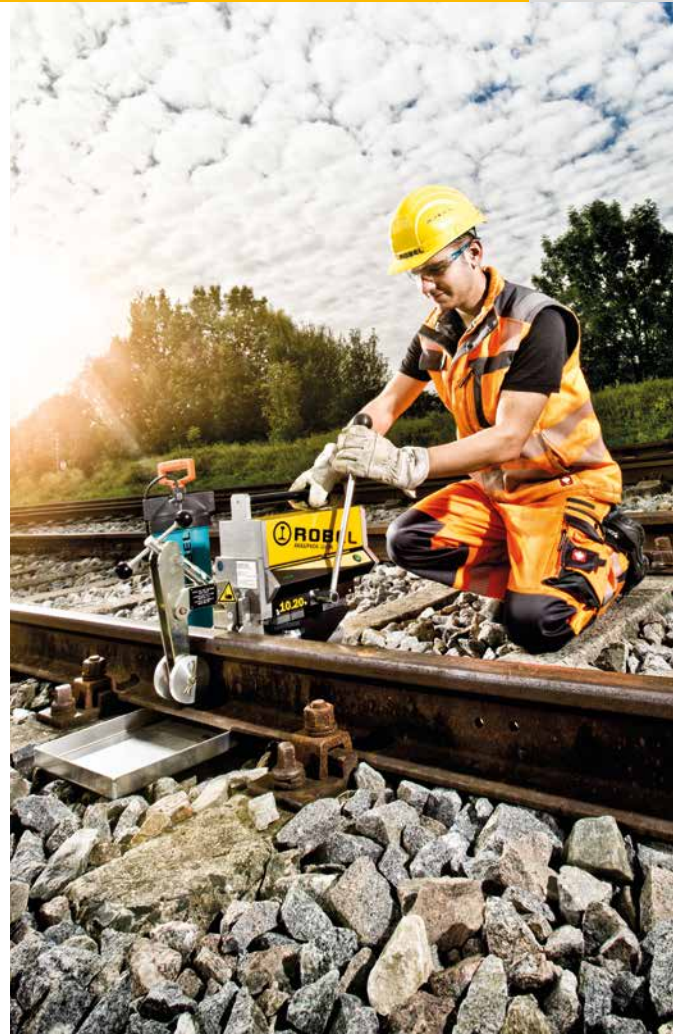
- Economical consumption due to spring-loaded valve
- Flows through drill spindle and drill bit
- Reservoir with pressure pump

**Option:** With rail clamping device and multi-hole drilling templates

### TECHNICAL SPECIFICATIONS RODRILL B Light

Output	1600 W
Number of drillings	75 at Ø 16 mm/ 60 at Ø 32 mm
Max. drill spindle speed	300 U/min
Max. drill diameter for	
rail web tensile strength 900 N/mm <sup>2</sup>	38 mm
Rail spacing	350 mm
Dimensions (L x W x H)	550 x 210 x 370 mm
Total weight with battery	~21.7 kg
Weight Battery	~6.2 kg

**Accessories see RODRILL 10.40**



### ROSAW B Battery powered Rail Band Saw

**Precise rail cutting. ROBEL patented 4-roller technology.**

### ITS BENEFITS. YOUR BENEFITS.

#### Precise cutting of the rail, with:

- Cold saw cut
- Quick and vibration-free operation
- No sparks
- Maximum durability
- Easy band replacement
- LED display for illumination of the work area

**Long band service life up to 25 cuts at unhardened rails, up to 8 cuts at hardened rails or of tough steel.**

### TECHNICAL SPECIFICATIONS ROSAW B

Output	1600 W
Battery power	~15 – 25 Schritze
Cutting speed	72 m/min
Cutting time	~2 min
Dimensions (L x W x H)	815 x 590 x 550 mm
Weight Band Saw	~45 kg
Weight Clamping bock	~19 kg
Weight Battery	~6.2 kg

**Accessories see ROSAW 12.72 MSB**





**ROMPACT B****Battery powered Portable Impact Wrench****30.20****Powerful and flexible wrenching.****ITS BENEFITS. YOUR BENEFITS.****Compact in construction, flexible in use**

- For tightening and loosening nuts and sleeper bolts
- 90° adjustable handle, particularly for wrenching brackets

**Ergonomic application**

- Height adjustable handle
- Low vibration operation

**TECHNICAL SPEC.****ROWRENCH B**

Output	adjustable 50/75/100%
Number of tightening cycles	~600 (per 4 seconds)
Max. Torque	1800 Nm
Dimensions (L x W x H)	780 x 510 x 240 mm
Total weight with battery	~19.2 kg
Weight Battery	~6.2 kg
Weight Socket	~1.5 kg

**Accessories see ROMPACT 30.10****ROTAMP B Light****Battery powered Vertical Tamber****62.20L****Lasting correction of track geometry level errors.****ITS BENEFITS. YOUR BENEFITS.****Permanently stable track geometry, ergonomic tamping**

- Optimum compaction of ballast under the sleeper due to ROBEL vertical tamping principle
- High bearing load of the track because of the interlocked ballast
- Minimum hand-arm vibration thanks to patented 2-level vibration decoupling
- Easy operation due to low weight of the machine

**TECHNICAL SPEC.****ROTAMP B Light**

Output	2000 W
Dimensions (L x W x H)	1080 x 510 x 410 mm
Total weight with battery	~24.8 kg
Weight Battery	~6.2 kg

**Accessories see ROTAMP 62.05**



## ROXTRACT B Spike

## Battery Powered Spike Puller

33.20

Portable battery powered Spike Puller for pulling spikes out of sleepers.

### ITS BENEFITS. YOUR BENEFITS.

#### Easy use

- High traction power up to 7,5 to
- Suitable for Battery powered Impact Wrench M18 Fuel™. US Version (not included in delivery)
- Conversion to other spike forms (Hairspike – Dogspike) possible due to easy change of tongs

#### Emission-free and safe

- Without exhaust emissions
- Large area of application (tunnel and urban area)
- Maximum safety due to closed design



### TECHNICAL SPECIFICATIONS

#### ROXTRACT B Spike

Weight

12,5 kg without Impact Wrench

16 kg with Impact Wrench

Traction power

max. 7,5 to

### ACCESSORIES

5334220002 Hairspike tongs  
9002003168 Reflector stripes  
8998900100 Shoulder strap

#### Toolkit for tong change

9002501146 roll-up case  
9002501695 spanner  
9002501765 comb. Ring tong

#### Tong suitable for

5334220001 Spike Type „Dogspike“  
5334220002 Spike Type „Hairspike“

## ROPOWER B DUAL

## High Pressure Power Pack

76.20

#### To power:

- ROSTRESS Hydraulic Rail Stressor 24.70
- ROTRIM Hydraulic Weld Trimmer 14.10

### ITS BENEFITS. YOUR BENEFITS.

- Low space requirement for transport and storage, due to compact construction
- Protection of the components from damage
- Clean due to emission-free working and reduced noise emissions
- Large area of application (tunnel, urban area, surface mining)
- ROBEL Batteries 71.01 useable (550 Wh, 700 Wh)



### TECHNICAL SPECIFICATIONS

Drive	Akku
Battery output	700 Wh
Dimensions (L x B x H)	600 x 520 x 420 mm
Weight	45 kg (incl. battery)
Weight battery	6,2 kg



# DRILLING

DRILLING



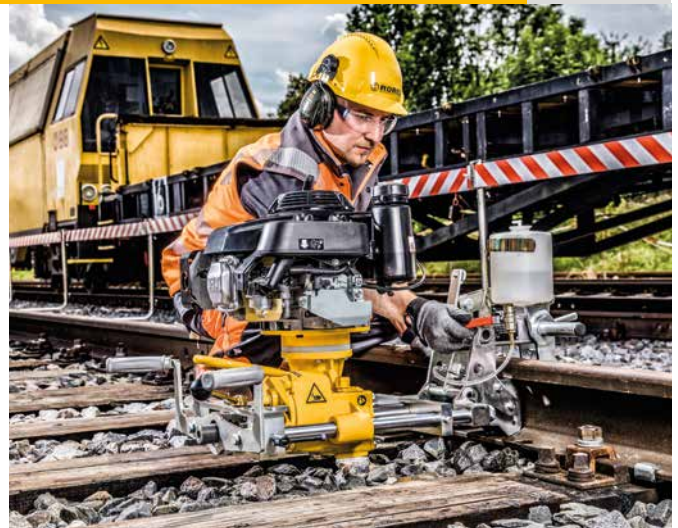
**RODRILL**

**Battery Powered Rail Drilling Machine**



**For drilling flat bottom and grooved rails, also on free rail ends and in switch areas.**

- Robust spiral drill technology
- Quick-clamping device
- Automatic drill feed
- Fast feed and return of drill bit
- Drill yoke with quick-clamping device and anti-twist fishing surface clamping template for three rail types S49, S54, UIC60
- Automatic height adjustment of drill, even for worn rails
- Indicator for bore centre in longitudinal rail direction
- Container for drilling fluid



## TECHNICAL SPECIFICATIONS

	RODRILL P4	RODRILL E
Drive	air-cooled 4-stroke petrol engine	electric motor
Type	Honda GXV 160	400 V, 50 Hz
Output	3.6 kW at 3000 rpm	2.7 kW at 2850 rpm
Max. drill spindle speed	62 rpm	59 rpm
Drilling time (automatic feed)	approx. 90 s	
Drill mounting of drill spindle	Morse taper MK4	
Max. drill diameter at a rail web strength of 1000 N/mm	40 mm	
Smallest distance between rail end and drill hole	40 mm	
Smallest distance between rail heads in switch areas	55 mm	
Dimensions (L x W x H)	920 x 560 x 540 mm	
Total weight	~66 kg	~68 kg

## ACCESSORIES

### Spiral drill bits 95.02/HSS

For drilling alloyed and unalloyed steel up to approx. 900 N/mm<sup>2</sup>

- of high speed steel (HSS)
- with Morse taper shank MT2/MT3/MT4

#### With MT2

9002501501	dia. 17 mm
9002501502	dia. 18 mm
9002501563	dia. 19 mm
9002501575	dia. 20 mm
9002501599	dia. 21 mm
9002501506	dia. 22 mm
9002501576	dia. 23 mm

#### With MT3

9002501215	dia. 24 mm
9002501507	dia. 25 mm
9002501508	dia. 26 mm
9002501548	dia. 27 mm
9002501510	dia. 28 mm
9002501512	dia. 29 mm
9002501513	dia. 30 mm
9002501549	dia. 31 mm



#### With MT4

9002501515	dia. 32 mm
9002501516	dia. 33 mm
9002501518	dia. 34 mm
9002501605	dia. 35 mm
9002501606	dia. 36 mm
9002501519	dia. 38 mm

### Spiral drills 95.02/HSS/E

For drilling hard to cut materials at high thermal loading. Particularly suited for drilling rust- and acid-resistant steels (V2A, V4A, etc.), high chrome alloyed and heat-resistant steels, steel and cast steel up to at least ~1100 N/mm<sup>2</sup> tensile strength. About 5-fold longer lifetime compared to HSS quality with steel of approx. 900 N/mm<sup>2</sup>.

- of cobalt alloyed high speed steel (HSS/E)
- with Morse taper shank MT2/MT3/MT4
- surface specially treated so less tendency to weld on, plus improved chip clearance.

#### With MT2

9002501503	dia. 18 mm
9002501591	dia. 20 mm
9002501505	dia. 21 mm
9002501601	dia. 22 mm



## ACCESSORIES

### With MT3

9002501592	dia. 24 mm
9002501509	dia. 26 mm
9002501511	dia. 28 mm
9002501604	dia. 29 mm
9002501514	dia. 30 mm

### With MT4

9002501199	dia. 32 mm
9002501517	dia. 33 mm
9002501593	dia. 34 mm

9894024422	Rail profile template Included in machine price for S49, S54 and UIC 60 rails.
------------	---

9002501198	Reducing sleeve Morse taper MT 4/3 for drill bit diameters 23.5 mm to 31.5 mm
9002501197	Reducing sleeve Morse taper MT 4/2 for drill bit diameters 14.5 mm to 23 mm
9002501196	Reducing sleeve Morse taper MT4/1 for drill bit diameters under 14 mm

For other rail sections upon request, please state the precise dimensions.

### Multi-hole drilling templates

For drilling holes with a precise spacing (<0.2 mm), e.g. for insulated joints.

8001035010	Multi-hole drilling template incl. track panel template, drill guide and mandrel for S 49 and S 54 rails with drilling hole distance from rail end 70 mm + 165 mm
8001035012	Multi-hole drilling template for UIC 60 rail, otherwise as above

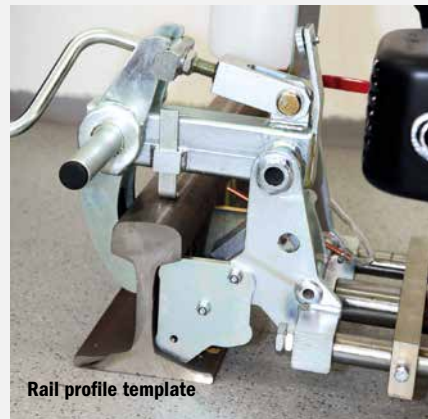
For other rail sections upon request, please state the precise dimensions.

9894021035	Transport and storage box, wooden, with lockable lid and carrying handles
9002501016	Drift

### Rail profile templates

8940264422	UIC/S49
8940261114	R50/R65
8940264164	UIC/S49
8940264197	RI60/R50
8940261131	RI59N=RI60/S49

9001511027	Coolant concentrate
9001511033	Antifreeze



Rail profile template



Reducing sleeve



Multi-hole drilling template



**Efficient drilling of rail profiles in the signal technology and railway construction.**

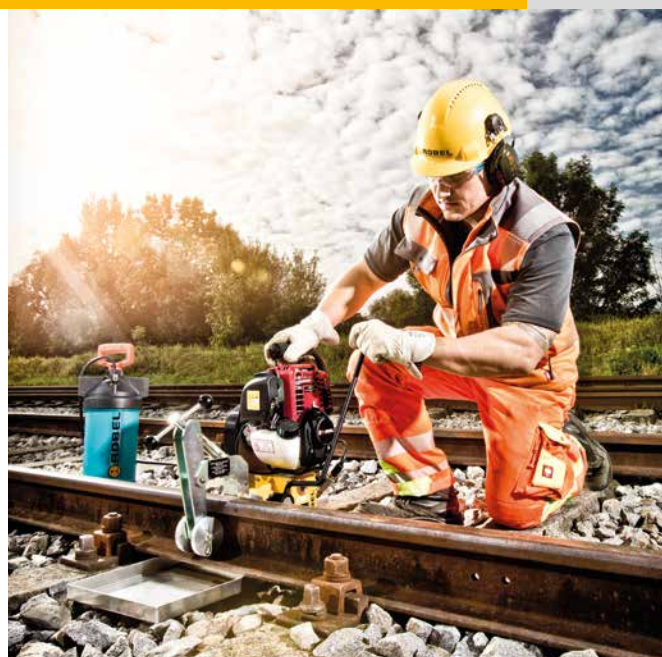
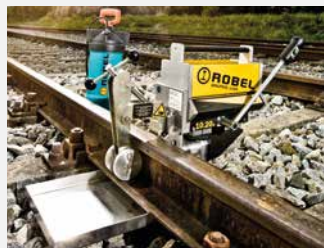
### ITS BENEFITS. YOUR BENEFITS.

#### Efficiency and mobility

- Drilling time about 12 – 60 seconds, depending on rail thickness and execution
- Coolant reservoir with pressure pump
- Coolant flows through drill spindle and drill bit

#### Easy handling

- One-man operation
- Manual feed



TECHNICAL SPECIFICATIONS	RODRILL P4 light	RODRILL E light	RODRILL B Light
	AIR-COOLED 4-STROKE PETROL ENGINE	3-PHASE ELECTRIC MOTOR	10.20 RECHARGEABLE BATTERY
Type	HONDA-GX35	400 V/50 Hz	
Output	1 kW at 7000 rpm	0.55 kW at 2800 rpm	1600 W; Number of drillings: 75 at Ø 16 mm/60 at Ø 32 mm
Max. drill spindle speed	300 rpm	217 rpm	300 rpm
Max. drill diameter for rail web			
tensile strength 900 N/mm <sup>2</sup>	38 mm	38 mm	38 mm
Rail spacing	350 mm	350 mm	350 mm
Dimensions (L x W x H)	500 x 310 x 520 mm	500 x 310 x 520 mm	550 x 210 x 370 mm
Weight	~19 kg	~21 kg	with battery ~22.7 kg; weight battery ~6.2 kg

**More information: Battery Technology**

### ACCESSORIES

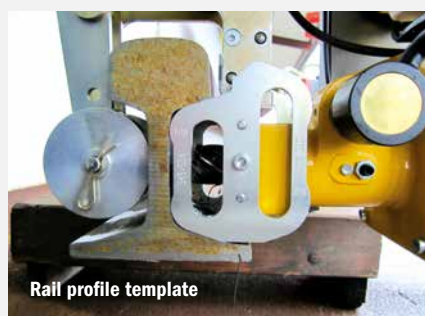
#### Equipment for drilling holes in flat bottom rails

##### Rail profile templates

Two items each per rail section are required

8204050100 for S49/S54/UIC60  
 8204050110 for 115/119/132/136LB  
 8204050120 for R65/R50  
 8204050130 for U33/U50  
 8204050140 for UIC60/U52  
 8204050190 for BV50  
 8204050200 for SJ 43  
 8204050210 for UIC54/UIC54E  
 8204050230 for U54  
 8204050240 for U69  
 8204050250 for 53KG Australia  
 8204050270 for 60KG Australia  
 8204050280 for 31.75 kg Greece  
 8204050290 for UIC60/U50 France  
 8204050300 for EST46/U55  
 8204050310 for SBB I  
 8204050320 for S40  
 8204050330 for VST36  
 8204050340 for PLM48LP

8204050350 for S33, drilling height 57 mm  
 8204050360 for NP46, drilling height 62.25 mm  
 8204050370 for U33/PLM48LP  
 8204050400 for 100 RA  
 8204050410 for Xa  
 8204050420 for XXIVa  
 8204050470 for R43  
 8204050480 for UST36/dr. height 56 mm  
 8204050510 for 80LB/dr. height 55.6 mm  
 8204050520 for 100LB/dr. height 63.5 mm  
 8204050530 for 20KG/dr. height 45 mm



Rail profile template



## ACCESSORIES

8204050540	for Form A dr. height 59.5mm
8204050550	for S52 dr. height 80.5 mm
8204050570	for AS41KG dr. height 60.3 mm
8204050580	for AS50KG dr. height 67mm
8204050630	for 50T Belgium
8204050650	for AS47KG
8204050720	for 57 kg/m dr. height 70mm
8204050730	for 60 kg/m dr. height 70mm
8204050740	for 48 kg/m dr. height 66mm
8204050750	for 48+57 kg/m South Africa
8204050760	for 57+60 kg/m South Africa
Other diameters available upon request.	

### For grooved rails

(only with clamping device 9801040089)

8204050150	RI60/DH 75 mm/outside
8204050160	RI60/DH 75 mm/grooved side dr. height
8204050170	RI60/RI 59 outside, DH 73 mm
8204050180	RI60/RI59 grooved side, DH 73 mm
8204050260	for PH 37/DH 75 mm/outside + 2x thrust washer 9801040068
8204050380	for RI55N of outside
8204050390	for RI55N of grooved side
8204050430	for PH37A of outside, DH=71mm + 2x thrust washer 9801040068
8204050490	for NP4aM/DH 82 mm/outside + 2x thrust washer 9801040068
8204050500	for G51, DH 53 mm
8204050590	for NT1/DH 77 mm/outside
8204050600	for NT1/DH 77 mm/inside
8204050660	for PH37 gauge bar
Other diameters available upon request.	

### For conductor rails and small grooved rails

(use only with clamping device 8204100004)

8204050221	for STR40 and ASS5100
8204050440	for S20
8204050450	for 20 kg/m customer Altiservice
8204050460	for 14.5 kg/m customer Altiservice
8204050610	for 81LB (40.31 kg/m)
8204050620	for 30 kg/m South Africa
8204050640	for AS31KG
8204050680	for VST C DH 50 mm
8204050690	for 70LB ASCE DH 52 mm
8204050700	for 60LB ASCE DH 48.4 mm
8204050710	for S30, DH 48.25 mm
Other diameters available upon request.	

### Equipment for drilling holes in grooved rails

9801040089	Quick-clamping device for grooved rails up to RI60
9801040090	Quick-clamping device for high grooved rails (greater than RI60, e.g. RI210/95+80/80a)
9801040068	2 additional thrust washers
8204100004	Clamping arm for conductor rail Device to be fitted to quick-clamping device for flat bottom rails for use with conductor rails
9002501655	Ejector pin/cooling pin, long, for adapter 8203550100
8203550100	Adapter, extension from 1 inch to 2 inches

To achieve good drilling results and optimum life of the drill bits,  
please do not forget the coolant pin!

9002501646	Ejector pin/cooling pin for core drill bits, dimension 6.35 x 77 mm for core drilling without adapter
------------	---

### Core drill 95.41-Asp for flat bottom rails, With 3-cut tooth geometry

Cobalt alloy high speed steel on a particle metallurgy  
basis with the highest purity and ductility for optimum cutting pro-  
perties and lifespan. With 19 mm Weldon shank, short variant,  
cutting depth 25 mm. Optimal drilling performance for rail web  
tensile strength up to 900 N/mm<sup>2</sup>.

9002501649	dia. 16 mm
9002501651	dia. 17 mm
9002501650	dia. 18 mm
9002501657	dia. 19 mm
9002501662	dia. 22 mm
9002501675	dia. 23 mm
9002501647	dia. 24 mm
9002501676	dia. 25 mm
9002501658	dia. 26 mm
9002501648	dia. 27 mm
9002501659	dia. 27.5 mm
9002501652	dia. 28 mm
9002501667	dia. 29 mm
9002501642	dia. 30 mm
9002501680	dia. 31 mm
9002501643	dia. 32 mm
9002501654	dia. 33 mm
9002501653	dia. 34 mm
9002501663	dia. 36 mm
9002501661	dia. 38 mm
Other diameters available upon request.	



Quick-clamping device for grooved rail



Quick-clamping device for grooved rail



## ACCESSORIES

### Adapter for spiral drill bits

For use with the aforementioned spiral drill bits. Adapter with 19 mm Weldon shank and drill bit seat appropriate to the drill bit diameter used. Permanent coolant supply

9820350140 dia. 7.5 mm  
 9820350110 dia. 8 mm  
 9820350120 dia. 10-12 mm  
 9820350130 dia. 13-15 mm

### Twist drill

Twist drills of HSS/E quality (cobalt alloyed) for drilling rails of maximum strength. Especially for the production of electric rail contacts, earthing bridges and earthing connectors. Drill is equipped with mounting shaft and permanent coolant supply. A special adapter (see below) is needed for operation.

9820350240 Ø 7,5 mm  
 9820350200 Ø 8 mm  
 9820350210 Ø 10 mm  
 9820350260 Ø 12 mm  
 9820350220 Ø 13 mm  
 9820350250 Ø 13,5 mm  
 9820350230 Ø 15 mm  
 Other diameters available upon request.

### Multi-hole drilling templates

Depending on the design, the template is placed at the rail end or on the continuous section of rail. Precise drilling intervals are achieved by simply inserting the drilling machine into the distance blocks. Multi-hole drilling template for 2 holes from the rail end, complete, comprising 1 clamp, 1 drilling template with 2 distance blocks and 1 rail end stop.

8204050004 for SBBi/SBBIV/66/200  
 8204050006 for EST46/67.5/140  
 8204050007 for U55/U33/57.5/160  
 8204050008 for U50/60/170  
 8204050009 for PLM48LP/65/120

### Multi-hole drilling template for 3 holes from the rail end

Complete, comprising 2 clamps, 1 drilling template with 3 distance blocks and 1 rail end stop

8204050005 for UIC60/U50/60/170/170  
 8204050010 for S33  
 8204050026 for R 50

### Multi-hole drilling template for 4 holes in a continuous section of rail

Complete, comprising 2 clamps, 1 drilling template with 4 distance blocks. Cutting width of 4 mm is taken into account.

8204050002 for UIC60/ISOL./Reinforced)  
 70/165/4 mm cutting width  
 8204050003 for UNI50/UNI60/ISOL/  
 Reinforced/6 mm cutting width

### Multi-hole drilling template for 6 holes in a continuous section of rail

Complete, comprising 2 clamps, 1 drilling template with 6 distance blocks. Cutting width of 4 mm is taken into account.

8204050025 for S49

For other rail sections, please enclose a drawing or provide precise details of the dimensions/cutting width required (preferably in digital format).

9801040004 Aluminium transport and storage box for holding and safely transporting the machine, coolant reservoir, collecting tray, drill bits and coolant. Fitted with lockable lid and carrying handles.

9801040005 Aluminium coolant and swarf collecting tray

9001511027 Coolant concentrate BC25125  
 5 litres, mixing ratio concentrate:water = 1:12

9001511033 Antifreeze, concentrate, 5 litres, mixing ratio  
 e.g. -15 degrees Centigrade:antifreeze:water = 2:3



Adapter and 13 mm spiral drill bit



Drill bit, adapter and coolant ejector pin



Multi-hole drilling template for 2 or 3 holes



Multi-hole drilling template for 4 holes



Transport case



For drilling holes in wooden sleepers

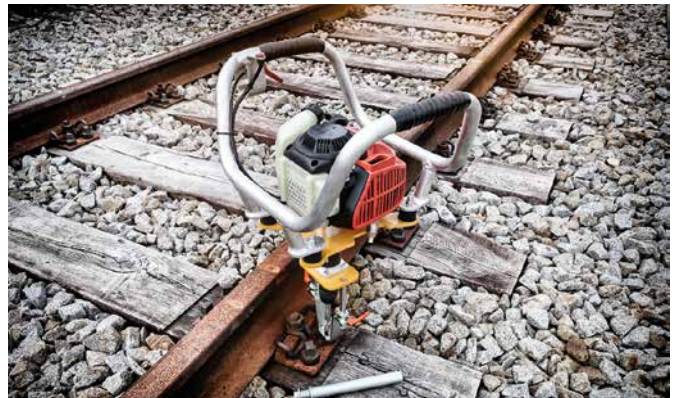
### ITS BENEFITS. YOUR BENEFITS.

#### Compact and powerful

- Light construction and easy to handle
- Engine speed controlled by hand throttle lever

#### Safe and ergonomical

- Highest possible safety due to centrifugal clutch
- Userfriendly application due to machine hight
- Replaceable chuck for drill bits up to 16 mm shank diameter
- Drilling depth with depth stop and drill sleeve
- Optional: combined depth stop with fixed drill sleeve



### TECHNICAL SPECIFICATIONS

#### ROBORE P4

Drive	air-cooled 4-stroke petrol engine
Type	Dolmar MS 4300
Output	1.5 kW at 7500 rpm
max. drill spindle speed	950 rpm
max. drill diameter	22 mm
adjustable drilling depth	100 - 180 mm
Dimensions without fixed drill sleeve (L x B x H)	420 x 500 x 800 mm
Dimensions with fixed drill sleeve (L x B x H)	420 x 500 x 1070 mm
Total weight	~13.3 kg

### ACCESSORIES

#### Sleeper drill bits

Automatic feed by screw point, made of tool steel, Lewis profile, single-blade without taper tap, length 245 mm, cylindrical shank of dia. 12 mm

9002501535	dia. 13 mm
9002501536	dia. 14 mm
9002501537	dia. 15 mm
9002501550	dia. 16 mm
9002501538	dia. 17 mm
9002501539	dia. 18 mm
9002501541	dia. 20 mm

Other diameters available upon request.





**For drilling holes in wooden sleepers**

- Powerful & accurate guidance of drill bit
- Drive via a heavy-duty narrow V-belt with self-tensioning device
- Simple operation
- Drill feed via wrench point and return spring
- Continuously adjustable drilling depth
- Drill spindle adjustable for angled holes (max. 6°)
- Quick-release chuck for drill bits with cylindrical shank up to 16 mm
- With drill sleeve
- Hub flange and replaceable drill guide for centred drilling through baseplate holes
- Rail running gear with insulated flanged wheels
- Plug-in outrigger with insulated castor

**TECHNICAL SPECIFICATIONS****ROBORE P4****ROBORE E**

Drive	air-cooled 4-stroke petrol engine	electric motor, 3-phase
Type	ROBEL 190	400 V/50 Hz
Output	4.9 kW at 4000 rpm	2.7 kW at 2850 rpm
Max. drill spindle speed	1200 rpm	950 rpm
Max. drill diameter	22 mm	
Max. drilling depth	180 mm	
Max. distance of drill spindle from rail centre	375 mm	
Max. capacity of chuck	16 mm	
Normal design suitable for:		
Rail height from/to	90/180 mm	
Head width up to	75 mm	
Gauge	1435 mm; Other gauges on request.	
Dimensions (L x W x H)	1000 x 400 x 880 mm	
Total weight	~63 kg	~66 kg

**ACCESSORIES****Sleeper drill bits**

Automatic feed by screw point, made of tool steel, Lewis profile, single-blade without taper tap, length 285 mm, cylindrical shank of dia. 13.8 mm

9002501707 dia. 16 mm

9002501708 dia. 17 mm

9002501709 dia. 18 mm

Other gauges available upon request.

8818930004 manual lever activation





# CUTTING

CUTTING



**ROCUT**

**Rail Cutter**





The innovation for all sawing requirements in new construction and maintenance.

### ITS BENEFITS. YOUR BENEFITS.

#### Patented 4-roller technology

- Precise and fast cutting of the rail, due to stable machine frame
- long life cycle thanks to reduced band twist

#### Efficient and ergonomic operation

- Easy and quick band replacement
- Petrol, electric and battery version

#### Flexible use

- Silent and low vibration operating
- Work with all types of rail, irrespective of degree of wear

#### Protection for man and machine

- Non-sparking work for operator safety
- Cold saw cut for stress free rail cutting, to preserve track quality

Long band service life up to 25 cuts at unhardened rails, up to 8 cuts at hardened rails or of tough steel.

TECHNICAL SPECIFICATIONS	ROSAW P4	ROSAW E
Drive	4-STROKE PETROL ENGINE	ELECTRIC MOTOR
Type	Honda GX35	110 V/50 Hz; 230 V/50 Hz; 400 V/50 Hz
Output	1.0 kW	0.75 kW
Cutting speed	72 m/min	72 m/min
Cutting time	~2 min	~2 min
Spindle feed	manual	manual
Dimensions (L x W x H)	815 x 590 x 550 mm	815 x 590 x 550 mm
Weight Band saw	~42 kg	~54 kg
Weight Clamping block	~19 kg	~19 kg



### ROSAW B

#### BATTERY

Cutting speed	72 m/min
Cutting time	~2 min
Battery power	~20 Cuts
Weight (without battery)	~45 kg
Weight Battery	~6.2 kg
Weight Band saw	~45 kg
Weight Clamping block	~19 kg

More information: Battery Technology





## ACCESSORIES

- 9801272008 Saw blade for 12.72, 2195 x 27 x 0,9 mm
- 9001511027 Coolant concentrate Bc25125, 5 litres,  
mixing ratio of concentrate : water = 1:50
- 9801040005 Aluminium coolant and swarf collecting tray
- 9800127006 5-litre pressure tank with bayonet coupler
- 9008120317 Extension cable 10 m (only for 230V version)

### Only for ROSAW B 12.20

- 7806800001 Battery
- 7806850001 Charger



**For fast and economical cutting of maximum strength rails**

- Short cutting times, e.g. 1 min. possible for rail profile 49E1
- The cutter can be clamped in such a way that sparks consistently fly downwards and cutting discs are used in an optimum manner.
- Sturdy, light-weight aluminium guide frame with articulated arm
- Quick clamping device for S49 (49E1), S54 (54E3, UIC60 (60E1) and R160 (60R1). Other rail profiles available upon request.
- With kerf indicator for precise determination of the cutting point.
- The cutting method from above and at an angle downwards leads to direct weight relief for the operator.
- Easy starting of the motors with Smart-Start decompression equipment.
- Optimum filter effect due to air injection technology, fine filter and impregnated pre-filter
- Centrifugal clutch as integrated safety feature
- Spark protection for cutting discs – pre-tensioned and continuously adjustable
- Adapter for cutting discs with 1 inch hole
- Accessibility – V-belt tension without disassembly of casing
- Electronic ignition, sealed against dust and humidity



TECHNICAL SPEC.	ROCUT P2 350	ROCUT P2 400	ROCUT P2 350 (without safety shutdown)
Drive	air-cooled 2-stroke petrol engine	air-cooled 2-stroke petrol engine	air-cooled 2-stroke petrol engine
Type	Husqvarna K1270	Husqvarna K1270 Rail	Husqvarna K1270
Output	5.8 kW at 8400 rpm	5.8 kW at 8400 rpm	5.8 kW at 8400 rpm
Max. Engine speed	9300 rpm	9300 rpm	9300 rpm
Cutting disc diameter	350 mm	400 mm	350 mm
Max. cutting disc speed	5100 rpm	4700 rpm	4700 rpm
Max. permissible circumferential speed	100 m/s	90 m/s	90 m/s
Cutting rate about	~1 min/cut	~1 min/cut	~1 min/cut
49E1	up to 8 cuts/disc	up to 10 cuts/disc	up to 8 cuts/disc
60E1		up to 8 cuts/disc	up to 6 cuts/disc
Guide frame	~9 kg	~5.5 kg	~5.5 kg
Motor cutter	~18 kg	~15.7 kg	~15 kg
Cutting disc	~0.8 kg	~1.3 kg	~0.8 kg
Total weight	~27.8 kg	~22.5 kg	~21.3 kg
Dimensions (L x W x H)	890 x 430 x 410 mm	771 x 241 x 476 mm	742 x 241 x 439 mm

**ACCESSORIES**
**Cutting discs**

- 9002000309 dia. 350 x 4 x 22.2 mm (TY)
- 9002000308 dia. 350 x 4 x 22.2 mm (KL)
- 9002000300 dia. 350 x 4 x 25.4 mm (TY) 1" holder
- 9002000436 dia. 350 x 4 x 25.4 mm (KL) 1" holder
- 9002000304 for aluminium, dia. 350 x 4 x 22.2 mm (TY)
- 9002000321 for aluminium, dia. 350 x 4 x 25.4 mm (TY) 1" holder
- 9002000911 dia. 400 mm x 4 mm x 25.4 mm
- 8001381001 Safety Blocking Device ROBEL 13.81  
For cutting rails under compressive stress,  
incl. 1 pair of wedges
- 8001381002 Spare wedges, 1 pair 13.81/size 11
- 8709900001 Steel transport and storage box, with lockable lid  
and two carrying handles, with holder for 10 cutting  
discs, dimensions 900 x 450 x 450 mm (L x W x H)





**For economically efficient cutting of maximum strength rails.**

- Cutting of rails in one step using the alloy swivel guide arm
- A spring on the hinged arm provides for optimum balancing of the load
- With the integrated kerf indicator the device can be fixed precisely at the cutting point of the rail.
- Easy start-up due to Smart Start decompression equipment
- Optimum filter effect due to air injection technology, fine filter and impregnated pre-filter
- Electronic speed limiter
- Centrifugal clutch
- Sparks are redirected by the adjustable hood
- Sturdy, light-weight aluminium guide frame with articulated arm and quick-clamping device



TECHNICAL SPECIFICATIONS	ROCUT P2 Swiv 300	ROCUT P2 Swiv 350	ROCUT E Swiv 300
Drive	air-cooled 2-stroke petrol engine	air-cooled 2-stroke petrol engine	electric motor, three-phase (ROBEL 13.80)
Type	Husqvarna K1270	Husqvarna K1270	400 V, 50 Hz
Output	5.8 kW at 8400 rpm	5.8 kW at 8400 rpm	2.7 kW at 2850 rpm
Max. Engine speed	9300 rpm	9300 rpm	5090 rpm
Cutting disc diameter	300 mm	350 mm	300 mm
Max. cutting disc speed	5100 rpm	5100 rpm	3900 rpm
Max. permissible circumferential speed	80 m/s	100 m/s	100 m/s
Cutting rate about	~1 min/cut about	~1 min/cut	~2 min/cut
49E1	up to 6 cuts/disc	up to 8 cuts/disc	up to 6 cuts/disc
60E1	up to 4 cuts/disc	up to 6 cuts/disc	up to 4 cuts/disc
Guide frame	~11.2 kg	~11.2 kg	~12 kg
Motor cutter	~16 kg	~16.8 kg	~31 kg
Cutting disc	~0.5 kg	~0.8 kg	~0.5 kg
Total weight	~27.1 kg	~28.8 kg	~43.5 kg
Dimensions (L x W x H)	740 x 500 x 400 mm	770 x 500 x 400 mm	650 x 350 x 380 mm

## ACCESSORIES

### Cutting discs

- 9002000307 dia. 300 mm x 3.5 x 22.2 (KL)  
 9002000302 dia. 300 mm x 3.5 mm x 25.4 mm, (KL) 1" holder  
 9002000348 for stone, dia. 300 x 3.5 x 22.2 mm, max. circumferential speed 80 m/s (corresponds to 5100 rpm)  
 9002000309 dia. 350 mm x 4 mm x 22.2 mm (TY)  
 9002000308 dia. 350 mm x 4 mm x 22.2 mm (KL)  
 9002000300 dia. 350 mm x 4 mm x 25.4 mm (TY) 1" holder  
 9002000436 dia. 350 mm x 4 mm x 25.4 mm (KL) 1" holder  
 9002000304 for aluminium, dia. 350mm x 4mm x 22.2mm(TY)  
 9002000321 for aluminium, dia. 350mm x 4mm x 25.4mm(TY) 1" holder

- 8001380010 Clamping device for grooved rails with screw; Quick release clamp when using the cutter for grooved rails up to RI 60 (max. head width 130 mm)  
 8001380020 Guide frame assembly for grooved rails  
 8001381001 Safety Blocking Device ROBEL 13.81 for cutting rails under compressive stress, incl. 1 pair of wedges  
 8001381002 Spare wedges, 1 pair 13.81/size 11  
 8001384004 Bogie 13.84 for 13.86 (with cutting disc dia. 300 mm)  
 8399900001 Steel sheet transport and storage case with lockable lid and two carrying handles, for machines with petrol engine



# GRINDING



**ROGRIND**

**Rail Head Grinding Machine**





**For derusting the rail web for a continuous current flow of the flash welder or to prepare an insulated joint**

- Grinding angle can be set precisely depending on the rail
- Profile grinding wheel with rotatable protective hood
- Transverse travelling gear for easy movement and positioning of the machine
- Rollers made of insulated material

TECHNICAL SPECIFICATIONS	ROGRIND P4 Web	ROGRIND E Web
Drive	4-stroke petrol engine	Electric motor 400 V/50 Hz
Type	HONDA GX 270	
Output	6.3 kW at 3600 rpm	4 kW/50 Hz at 2900 rpm
Grinding disc speed	4500 rpm	3600 rpm
Profile grinding wheel, for rails from S49		
Outside diameter	135 mm	
Inside diameter (holder)	25.4 mm (1")	
Height	90 mm	
Dimensions (L x W x H)		
Machine	1800 x 600 x 1100 mm	
Transverse travelling gear	1850 x 530 x 200 mm	
Weight, transverse travelling gear	~25 kg	~25 kg
Weight, machine	~95 kg	~98 kg

## ACCESSORIES

### Profile grinding wheels

9898081080 for rail sections S49 to R65,  
135 x 55 x 90/50/25.4

9002000556 for rail sections smaller than S49,  
135 x 55 x 70 x 20 x 25.4

8988980001 Conversion kit for wire brush

8329910001 Ballast box (for transverse travelling gear)



Conversion kit for wire brush



Profile grinding wheel



# ACCURATE AND PRECISE GRINDING WELD JOINTS.



Right-hand guide handle  
Standard guide system 5159900004

The grinding machine for reprofiling the rail head.

## ITS BENEFITS. YOUR BENEFITS.

### Starke Maschine. Universeller Einsatz. Powerful machine. Universal application.

- Can be used for all common types of rail due to adjustable spacing of guide discs on various rail head widths
- Durable stainless steel tank on ROGRIND P4 2.0
- Powerful electric motors
- Optional: LED lighting for ROGRIND P4 2.0 for optimum illumination of work area

### Simple operation.

#### Controlled and precise grinding.

- Machine specially adapted to the operator
- Adjustment of spindle resistance without tools
- Easy change of cup wheel due to Quicklock
- Digital operating hour meter/rev counter

TECHNICAL SPECIFICATIONS	ROGRIND P4 2.0	ROGRIND P2 2.0	ROGRIND E 2.0	ROGRIND D 2.0
Drive	Single-cylinder 4-stroke engine	Single-cylinder 2-stroke engine	Electric motor, 3-phase	Air-cooled single-cylinder diesel engine
Type	ROBEL 190	Minsel M165	400 V, 50 Hz	Yanmar L48AE-S
Output	~5 kW at 4200 rpm	4.9 kW at 4500 rpm	2.7 kW at 2850 rpm	3.5 kW at 3600 rpm
Total weight	from ~64.5 kg	from ~64 kg	from ~62.5 kg	from ~75 kg
Roller spacing	1000 mm	1000 mm	1000 mm	1000 mm



## ACCESSORIES

### Guide systems

5150220050 V	Standard guide system
5150200001 V	Universal guide system
5158931002	Multiroller carrier (2 required)

### Cup wheels

9002000687	Ø 125 mm, M20 central nut holder, max. circumferential speed 50 m/s, 125 x 65, grit size A12
9002000688	Ø 125 mm, 4xM8 screw fastening, max. circumferential speed 50 m/s, 125 x 65, pitch circle dia. 90, grit size A12
9002000689	Ø 150 mm, 4xM8 screw fastening, max. circumferential speed 50 m/s, 150 x 65, pitch circle dia. 115, grit size A14
9002000691	Ø 150 mm, 4xM8 screw fastening, max. circumferential speed 50 m/s, 150x70, pitch circle dia. 90 mm

9002000690	Ø 150 mm, M20 central nut holder, max. circumferential speed 50 m/s, 150 x 65, grit size A14
9878081000	Ø 90 mm conical for frog noses and switches, M20 central nut holder, (also suitable for the running surface of grooved rails), max. circumferential speed 50 m/s, 90 x 65, grit size A14
9002000330	Ø 90 mm cylindrical for built-up welds, M20 central nut holder
9000200182	Steel-wire brush (plaited) Steel-wire brush e.g. for rust removal from rails (Do not use without centring nut)
8931002007	Centring nut, fixings for steel-wire brush

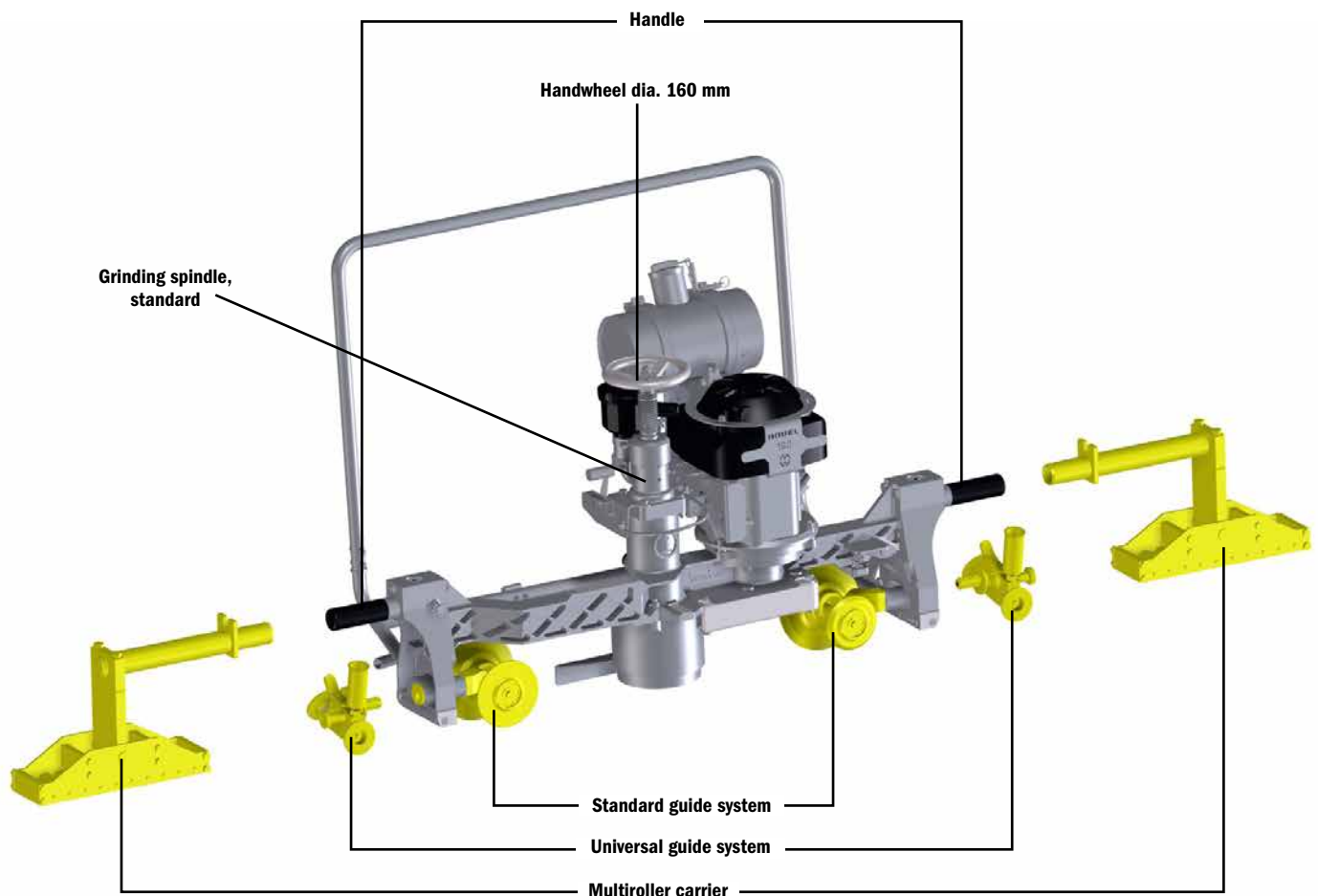


Illustration 13.45 SKS: Left-hand guide handle

**Do you require a different design?  
Please get in touch with your ROBEL contact.**



**LIGHT-WEIGHT.  
COMPACT.  
POWERFUL.**



Left-hand guide handle. Universal guide system, with extension arm, 5159900074

For the precise grinding of welding joints and reprofiling of the complete rail head.  
Can also be used at switches and for grinding grooved rails.

### ITS BENEFITS. YOUR BENEFITS.

#### Convenient to use. Individual format.

- Easy change of cup wheel due to Quicklock
- Non-projecting handles for easy transport
- Optional: LED lighting for ROGRIND P4 3.0 for optimum illumination of work area
- Side stand for safe parking of machine for the version with left-hand guide handle

#### Powerful machine. Powerful grinding.

- Adjustment of rotational resistance on spindle handwheel as required without tools
- Durable stainless steel tank on ROGRIND P4 3.0
- Powerful drives
- Height-adjustable spark shield
- Stable universal guidance system

TECHNISCHE DATEN	ROGRIND P4 3.0	ROGRIND P2 3.0	ROGRIND E 3.0	ROGRIND D 3.0
Drive	Single-cylinder 4-stroke engine	Single-cylinder 2-stroke engine	Electric motor, 3-phase	Diesel engine Yanmar
Type	ROBEL 190	Minsel 165	400 V, 50 Hz	3,5 kW at 3600 rpm
Output	~5 kW at 4200 rpm	4,9 kW at 4500 rpm	2,7 kW at 2850 rpm	from ~73 kg
Total weight	from ~63 kg	from ~62,5 kg	from ~61 kg	
Roller spacing	850 mm	850 mm	850 mm	850 mm



## ACCESSORIES

### Accessories specific to ROGRIND P4 3.0

5158930008 Tank handle

### Guide systems

5150220050V Standard guide system  
5150200001V Universal guide system  
5158930001 Multiroller carrier (2 required)  
5158931002 Extension arm for frog noses

### Handles

5158930005 Handle, inside  
5158930009 Handle, outside

### Handwheel

5158930003 Handwheel dia. 100 mm  
5158930010 Handwheel dia. 160 mm

### Grinding spindle

by customer: grinding spindle, standard  
by customer: grinding spindle, raised

### Cup wheels

9002000687 ø 125 mm, M20 central nut holder, max. circumferential speed 50 m/s, 125 x 65, grit size A12  
9002000688 ø 125 mm, 4xM8 screw fastening, max. circumferential speed 50 m/s, 125 x 65, pitch circle dia. 90, grit size A12  
9002000689 ø 150 mm, 4xM8 screw fastening, max. circumferential speed 50 m/s, 150 x 65, pitch circle dia. 115, grit size A14  
9002000691 ø 150 mm, 4xM8 screw fastening, max. circumferential speed 50 m/s, 150x70, pitch circle dia. 90 mm  
9002000690 ø 150 mm, M20 central nut holder, max. circumferential speed 50 m/s, 150 x 65, grit size A14  
9878081000 ø 90 mm conical for frog noses and switches, M20 central nut holder, (also suitable for the running surface of grooved rails), max. circumferential speed 50 m/s, 90 x 65, grit size A14  
9002000330 ø 90 mm cylindrical for built-up welds, M20 central nut holder  
9000200182 Steel-wire brush (plaited) Steel-wire brush e.g. for rust removal from rails (Do not use without centring nut)  
8931002007 Centring nut, fixings for steel-wire brush

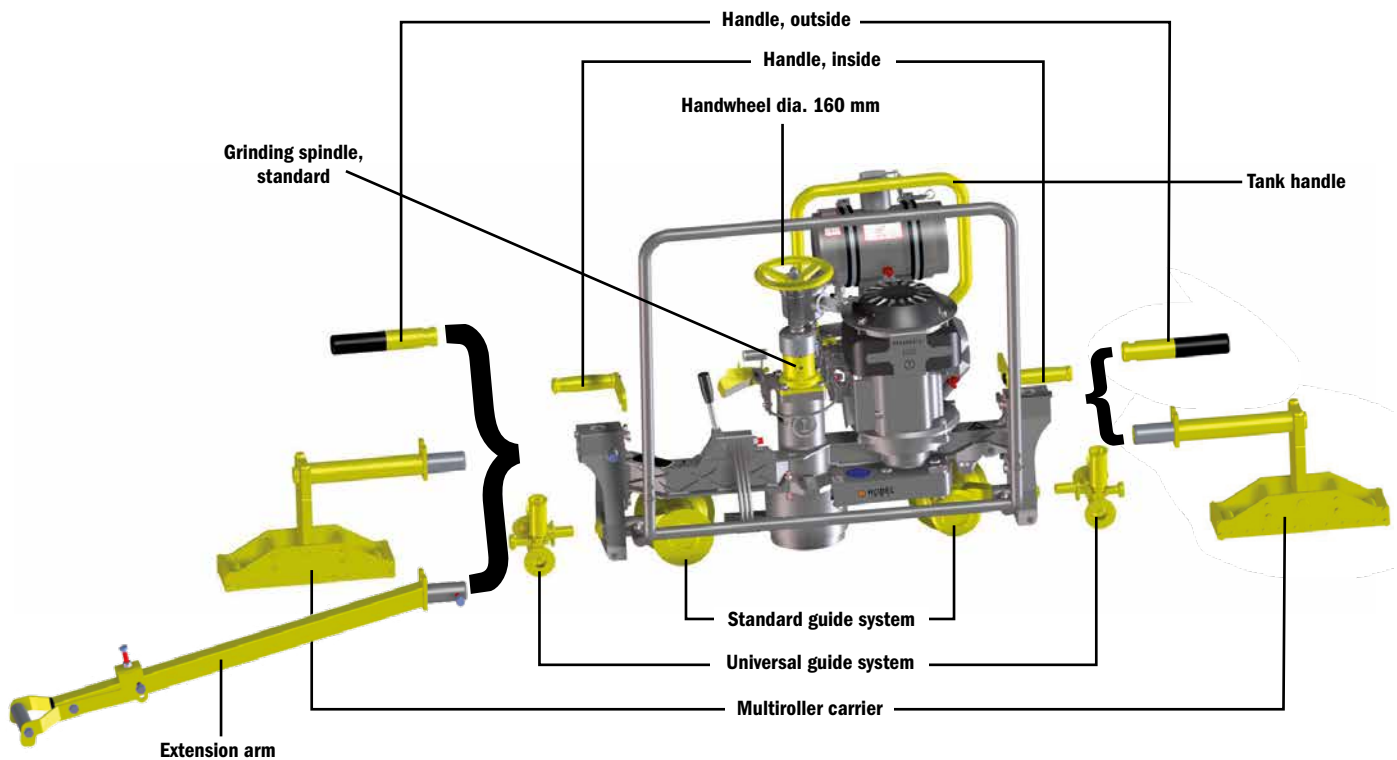
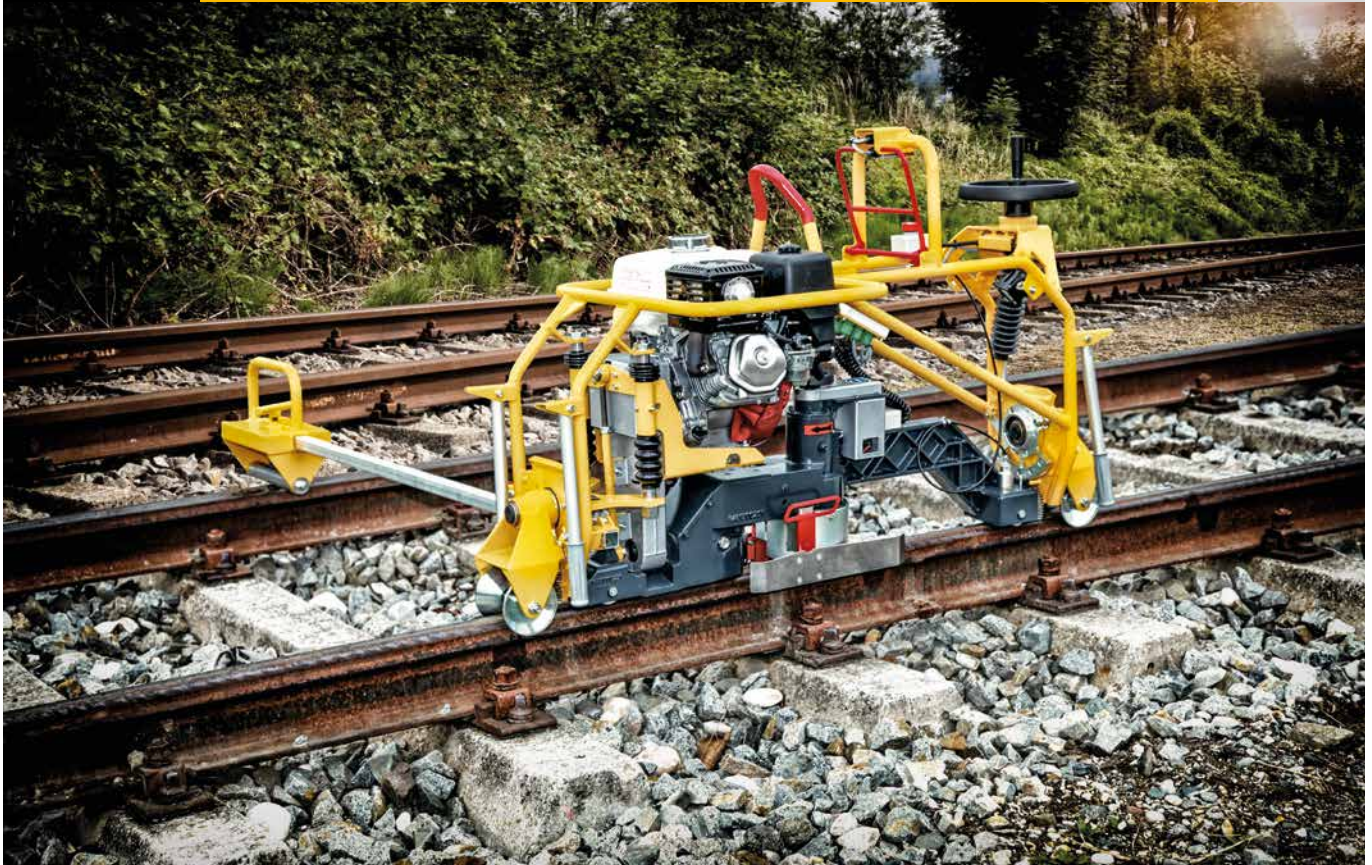


Illustration 13.45 WBF: Right-hand guide handle

**Do you require a different design?  
Please get in touch with your ROBEL contact.**





**For true-to-form grinding of the rail head after welding work to restore a perfect profile**

### ITS BENEFITS. YOUR BENEFITS.

- 100% copy of the rail profile due to special copying device.
- Simple operation in ergonomic work position
- More safety
  - during non-operation due to dead man's brake (optional)
  - during grinding due to depth stop (optional)
  - due to good visibility from both operating sides, also at night due to LED lighting (optional)
- Ergonomic operation
  - whilst standing upright
  - due to ideal positioning of the cup wheel with the rocker switch
  - and the hand wheel in optimum grinding position
  - Can be operated with left or right hand with optimum view of the grinding area

#### Applications

- For thermite and flash-butt welding
- Can be used with 125 mm, 150 mm and optionally 175 mm cup wheels, even for high rail profiles





TECHNICAL SPECIFICATIONS	ROGRIND P4 Head 1.0	ROGRIND E Head 1.0
Drive	4-stroke petrol engine	Electric motor
Type	Honda GX 270	3-phase motor
Output	6.3 kW at 3600 rpm	4 kW at 2850 rpm
Cup wheel	dia. 125 mm, also dia. 150 mm	dia 150 mm, also dia. 125 mm
Max. permissible circumferential speed	50 m/s	50 m/s
Grinding disc speed	4200 rpm	4500 rpm
Grinding base/roller spacing	1000 mm	1000 mm
Weight	~99.5 kg	~99.5 kg
Weight, outrigger	~28 kg	~25 kg
Length without/with folding handles	1450/1840 mm	1550/1975 mm
Width without/with folding handles	550/580 mm	325/490 mm
Height	870 mm	880 mm
Pivoting angle, copying carriage	92°	92°

## ACCESSORIES

### Cup wheels

- 9002000687 dia. 125 mm, central nut holder M20, max. circumferential speed 50 m/s, 125 x 65, grit size A12
- 9002000688 dia. 125 mm screw attachment 4xM8, max. circumferential speed 50 m/s, 125 x 65, pitch circle dia. 90, grit size A12
- 9002000690 dia. 150 mm, central nut holder M20, max. circumferential speed 50 m/s, 150 x 65, grit size A14
- 9002000689 dia. 150 mm screw attachment 4xM8, max. circumferential speed 50 m/s, 150 x 65, pitch circle dia. 115, grit size A14
- 9878081000 dia. 90 mm conical for frog noses and switches, central nut holder M20 (also suitable for the running surface of grooved rails), circumferential speed max. 50 m/s, 90 x 65, grit size A14
- 9002000330 dia. 90 mm, cylindrical for built-up welds, central nut holder M20, max. circumferential speed 50m/s, 90 x 65, grit size A14
- 8489910003 Grooved rail kit
- 8931002007 Centring nut, hardware for steel wire brush
- 9000200182 Steel wire brush (plaited), e.g. for derusting rails







## ONE MACHINE. TWO MODULES.

Simply ergonomic high-frequency grinding.

### ITS BENEFITS. YOUR BENEFITS.

#### For a better surface pattern of the rail

- Less working time thanks to consistently high grinding performance
- High grinding quality and unobstructed view of the grinding area due to compact and low vibration e-motor
- Finishing achieved with a fine-grinding method patented by ROBEL

#### Intelligent use of energy

- Energy conversion without a loss from e-motor onto grinding shaft/grinding wheel
- ROBEL Supercap in the Power pack: Excessive energy is collected and stored via the generator directly in compact electrolytic capacitors (Supercaps) and released during peak loads

#### Smart positioning, smooth grinding

- The grinding unit and the Power pack are two separate units. Transport is therefore easy and ergonomic.
- Effortless operation thanks to split up machine, weight of less than 60 kg each unit
- Comfortable handling of the machine due to O-handles with telescopic function and individual settings

#### More work safety, more efficiency

- Low hand/arm vibrations
- Optimum view onto the display in an ergonomic angle
- Integrated air guide carries dust and sparks down and outward
- Operator is exposed to significantly less exhaust gas, heat and noise

➤ More info on [ROBEL.com](http://ROBEL.com)



## TECHNICAL SPECIFICATIONS

Drive	Electric motor
Type	Brushless DC motor
Continuous output	3 kW
Peak output	7 kW
Circumferential speed	~50 m/s
Cup wheel	150 mm
Grinding disc speed	~5000 rpm
Power Supply	230 V
Grinding base/roller spacing	1000 mm
Depth adjustment of grinding spindle	electrical
Dimensions (L x W x H)	1950 x 460 x 850 mm
Without telescopic handles (L x B x H)	1750 x 410 x 850 mm
Weight	~56.5 kg
Weight, outrigger	~8.5 kg
Weight, connection cable	~5.0 kg

## ROGRIND HF Head



More information: Energy/Lighting



**For grinding of built-up welds on switch blades, crossing frogs, stock rails and check rails as well as for deburring rail heads and switches. Optionally also for grooved rails for trams.**

Adjustment of grinding disc via ergonomically adjustable hand lever and hand wheels for precise guiding:

- Can be moved by 32 degrees to either side
- Height adjustment

**Option for grinding grooved rails:** ROGRIND P4/E Switch 1.0 (grooved)



### ITS BENEFITS. YOUR BENEFITS.

#### High work quality & profitability

- Precise settings
- Particularly large work area
- Check rail guidance to bridge the clearance in the frog point area to ensure linear grinding.
- Greater stability due to double holder of the 4 insulated flange rollers (divided)

#### User-friendly

- Ergonomic guidance and operation of the machine
- Good view of the grinding area
- Frame can be divided for easier transport

#### Easy to maintain

- Power transferred via ribbed V-belt

### TECHNICAL SPECIFICATIONS

	<b>ROGRIND P4 Switch 1.0</b>	<b>ROGRIND E Switch 1.0</b>
Drive	4-stroke petrol engine	electric motor, 3-phase
Type	HONDA GX 200	400 V, 50 Hz
Output	4.3 kW at 3600 rpm	3 kW at 2880 rpm
Grinding disc		
Outside diameter	260 mm	260 mm
Bore x thickness	120 mm x 25 mm	120 mm x 25 mm
Max. swivel range	32° in both directions	32° in both directions
Grinding disc speed	3500 rpm	3100 rpm
Dimensions (L x W x H)	2360 x 1200 x 930 mm	2360 x 1200 x 930 mm
Machine	~87.4 kg	~96.4 kg
Outrigger	~11 kg	~11 kg
Grinding disc	~2.6 kg	~2.6 kg
Total weight	~101 kg	~110 kg

### ACCESSORIES

#### Grinding discs

- 9002000701 dia. 260 mm x 25 mm, holder dia. 120 mm, circumferential speed max. 50 m/s, fabric reinforced for flat bottom rails
- 9002000463 dia. 254 x 40 x dia. 76.2 mm
- 9002000439 dia. 255 x 32 x dia. 25.4 mm

#### Grinding disc holders

- 8890500001 dia. 254 x 40 x dia. 76.2 mm

#### Flange extension

- 9801361111 Set from 1435 mm to 1600 mm
- 9801361112 Set from 1435 mm to 1520 mm
- 9801361113 Set from 1435 mm to 1674 mm
- 9801361106 Guide frame with guide rollers for gauge reduction from 1435 mm to 900 mm
- 8898980001 Spark safety set for rollers
- 9000100195 Tarpaulin

- 8899910001 Machine centring in switch area

#### Additional equipment for grinding grooved rails

- 8894150004 Conversion kit for grinding disc dia. 260 x 15 mm
- 8890110005 Roller set ( 4 off) with flange (when retrofitting)

#### Grinding disc

- 9002000654 dia. 260 mm x 15 mm, holder dia. 120 mm, circumferential speed max. 50 m/s, fabric reinforced for grooved rails



Grinding disc



# UNIVERSAL GRINDING FROM RAIL TO SWITCH.



## ITS BENEFITS. YOUR BENEFITS.

### Wide range of applications

- Can be used for almost of the grinding- and reprofiling works, especially in the area of switches
- Option: use for grooved rails

### High grinding and working quality

- Precise surface pattern due to stable machine operation and central adjustment of the grinding wheel
- Exact setting of the grinding wheel angle by adjustment and great scale
- Constant grinding on the side of the rail due to additional guide rollers
- Twist-resistant due to strong, closed frame

### Practical use

- Intuitive operation due to ergonomic levers and hand gears
- reducible transport size of the frame
- Continuously adjustment of track gauge due to telescopic frame without tools

### Optional

- Dead man's brake
- Toolbox for storage





TECHNICAL SPECIFICATIONS	ROGRIND P2 Switch 2.0	ROGRIND P4 190 Switch 2.0
Drive	2-stroke petrol engine	4-stroke petrol engine
Type	Minisel 165	ROBEL 190
Output approx.	4.9 kW at 4500 rpm	approx. 5.0 kW at 4000 rpm
Cup wheel		
outside diameter	125 mm	125 mm
Inclination adjustment range	Inside 80°, outside 20°	Inside 80°, outside 20°
Grinding disc speed	~4500 rpm	~4200 rpm
Dimensions working settings (L x W x H)	~2080 x 1160 x 1160 mm	2070 x 1170 x 1030 mm
Dimensions transport settings (L x W x H)	~1650 x 1160 x 790 mm	
Total weight	~126 kg	~126 kg
Track gauge	1000 – 1676 mm	1000 – 1676 mm

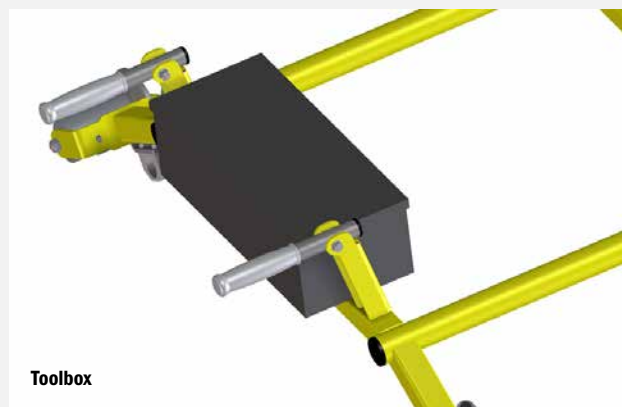
TECHNICAL SPECIFICATIONS	ROGRIND P4 390 Switch 2.0	ROGRIND E Switch 2.0
Drive	4-stroke petrol engine	electric motor, 3-phase
Type	Honda GXV 390	400V 50Hz
Output approx.	7,6 kW bei 3600 min-1	2,7 kW
Cup wheel	Ø 150 mm	Ø 125 mm
Inclination adjustment range	-30/+30	-80/+20
Grinding disc speed	3600 rpm	2850 rpm
Dimensions working settings (L x W x H)	2060 x 1300 x 1160 mm	2080 x 1160 x 1160 mm
Dimensions transport settings (L x W x H)	1650 x 1300 x 1160 mm	1650 x 1160 x 1160 mm
Total weight	145 kg	124 kg
Track gauge	900-1676 mm	900-1676 mm

## ACCESSOIRES

### Cup wheels

- 9002000687 dia. 125 mm Central nut holder M20, max. circumferential speed 50 m/s, 125 x 65, grit size A12
- 9002000688 dia. 125 mm Screw attachment 4xM8, max. circumferential speed 50 m/s 125 x 65, pitch circle dia. 90, grit size A12
- 9002000690 dia. 150 mm, Central nut holder M20, max. circumferential speed 50 m/s, 150 x 65, grit size A14
- 9002000689 dia. 150 mm Screw attachment 4xM8, max. circumferential speed 50 m/s, 150 x 65, pitch circle dia. 115, grit size A14
- 9878081000 Cup wheel dia. 90 mm conical, for frog noses and switches, central nut holder M20 (also suitable for the running surface of grooved rails), circumferential speed max. 50 m/s, 90 x 65, grit size A14
- 9002000330 dia. 90 mm cylindrical for built-up welds, central nut holder M20

- 5128930001 Toolbox
- 5129910004 Retrofit kit deburring R190
- 5129910005 Retrofit kit deburring M165
- 9002000687 Cut wheel 125xM20
- 9002000690 Cut wheel 150xM20
- 5131280001 Dead man's brake
- 5129910004 Conversion kit for extendable swivel range to 90°
- 5129900008 Adapter plate with extendable swivel range



Toolbox



Used in the production of thermit welding of rail joints.

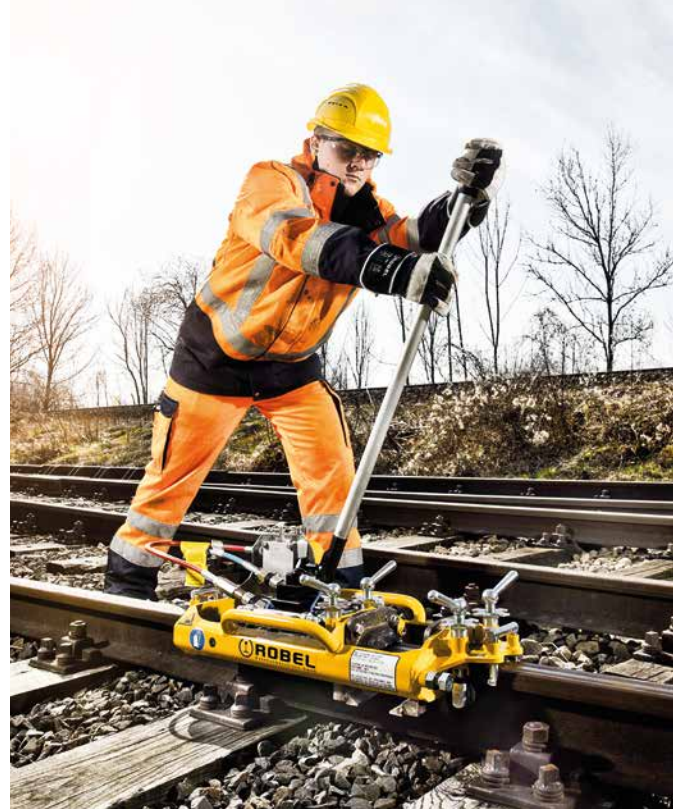
### ITS BENEFITS. YOUR BENEFITS.

#### Reliable and ergonomic use

- Durability thanks to robust construction with fine grained steel
- Easy handling due to ergonomic handles
- Reduced grinding of sheared weld, due to individual adjustment of shearing height
- Reduced wear of shear blades, thanks to adjustable stop screws
- Precise working result due to 4-fold downholder and double longitudinal guiding

#### Easy and quick removal of welding beads

- Individual adapted shear blades are pressed together by double-acting hydraulic cylinders
- No hot cracks on the weld, due to coincident shear blade attack from both sides



### TECHNICAL SPECIFICATIONS ROTRIM

Dimensions (L x W x H)

with hand pump	830 x 405 x 320 mm
without hand pump	830 x 355 x 215 mm (prepared for a hydraulic power pack)

Weight

with hand pump	~46 kg
without hand pump	~39.5 kg (prepared for a hydraulic power pack)

Shear blades	~3 kg
--------------	-------

Shear force at max.

operating pressure

with hand pump	500 bar/200 kN
with hydraulic power pack	550 bar/220 kN

max. travel	160 mm
-------------	--------

Filling capacity hydraulic oil

with hand pump	Renolin MR 310/1.1 l
without hand pump	Renolin MR 310/0.6 l

### ACCESSORIES

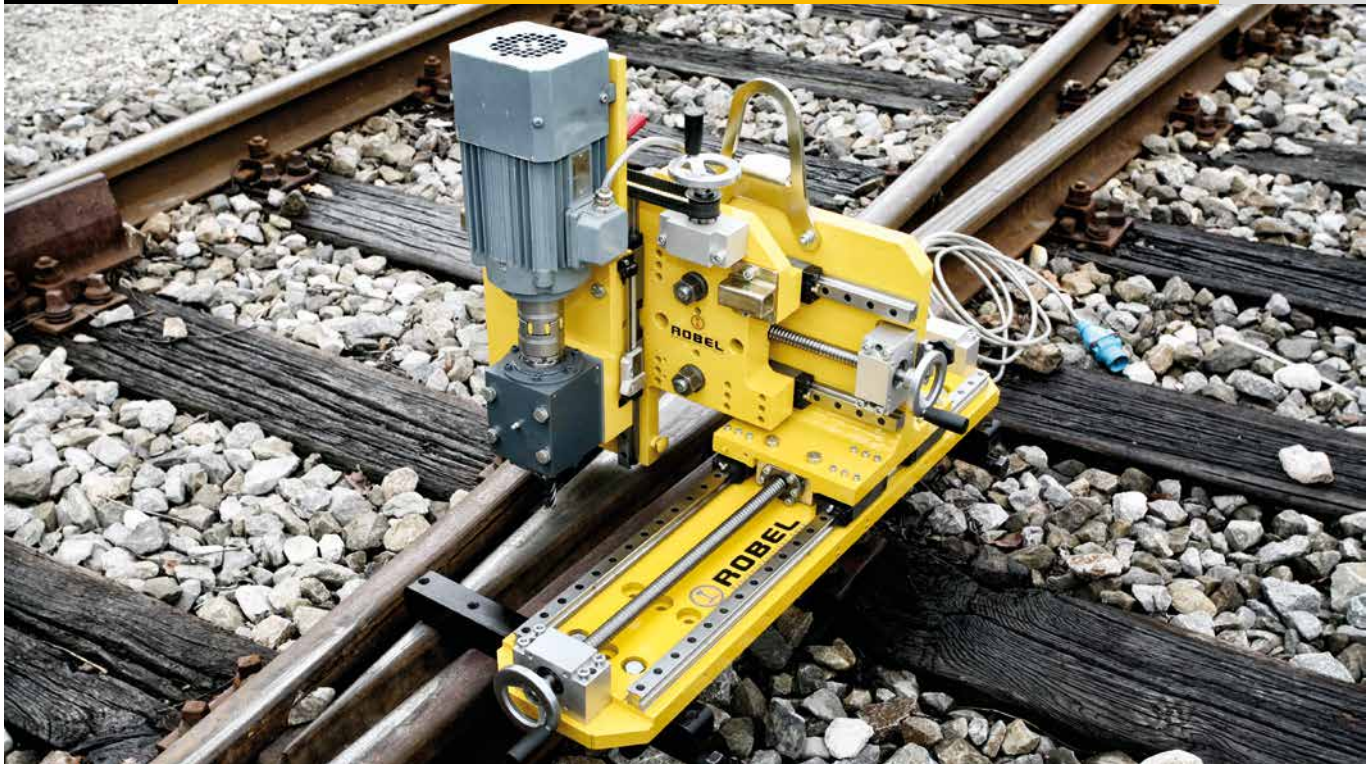
#### Shear blade sets

8859900001	for FORM B/S49/S54/UIC54E
9801410001	for FORM B/UIC60/UIC 54/R50/R65
8859900003	for FORM 132 LB
98014100030	Shear blade set for FORM A 132 RE, 140 RE, R65
9801410934	Brake ring 47X31 MS

Drive options: Energy/Lighting







**For the milling of switch diamonds and rails  
(Mainly for drainage holes in grooved rails)**

### ITS BENEFITS. YOUR BENEFITS.

#### Powerful & efficient

- Directed removal of material for all kinds of cracks and damages
- Even renewal of damaged sections without application of heat
- Compact design

#### Cost-efficiency

- Low repair costs due to
  - Saving of time in comparison to manual renewal
  - Optimal use of short possessions
  - Short mounting time
- Considerable reduction of costs due to renewal as opposed to replacement

#### User-friendly

- Modular design of machine
- Easy handling
- Magnetic mounting for work on rails embedded in asphalt as a special equipment



For hardened rails limited suitable.  
Please contact your ROBEL contact person.

### TECHNICAL SPECIFICATIONS

Drive	Rotary current motor 400 V
Power	2000 W
Quantity of metal removed from UIC 60 switch diamond	7 kg (Steel/h)
Operating time/milling machine at UIC 60 switch diamond	1 to 2 hours
Diameter of cutter	16/20 mm
Dimensions (L x W x H)	1000 x 500 x 650 mm
Weight of cutter head	41 kg
Weight without magnetic mounting	62 kg
Weight magnetic mounting	32 kg



# STRESSING PULLING BENDING



**ROPULL**

**Hydraulic Rail Pulling and Pushing Device**

STRESSING/PULLING/  
BENDING





**4 Roller-type Rail Bending Machine with hydraulic (roll) feed for bending grooved rails and vignol rails.**

### ITS BENEFITS. YOUR BENEFITS.

#### Robust machine. Correct rail bending.

- Stable, stationary bending machine
- Easy insert of rails due to horizontal arranged bending roller
- Correct bending, also of longrails due to bearing shafts fitted on both sides
- Rollers equipped with wear resistant bearings

#### Flexible and user-friendly.

- Best visibility on bending roller for precise working
- Digital control display of the hydraulically controlled roll feed
- Double sided bending in a through-feed method possible
- Replaceable bending rollers for different rail type
- Moveable control box with digital control display

### TECHNICAL SPECIFICATIONS

Dimensions ( L x W x H)

Weight

Output

Drive

Motor protection class

Throughput speed

Smallest bending radius

Min. surplus rails

Bending length

Bending roller

### ROBEND PLANT

2200 x 2500 x 1565 mm

~2500 kg

5 – 7,5 kW

Three-phase motor 400 V / 50 Hz

IP54 ISO class F

3 or 6 m /min

8 m

straight ~600 mm

arbitrary

4

### ACCESSORIES

8174661039 Bending rollers for vignol rails S54, S49, S41

8174661040 Bending rollers for grooved rails RI60, RI59, RI59N

Other bending rollers on request.

8178250040 undercarriage with wheels





### For the bending of switch blades at switches

A close fit of the switch blade on the stock rail is a precondition for a train travelling through the switch at the permitted speed, highest level of safety and as smoothly as possible. The railway switch regulations determine the permissible amount of lining.

- For switch maintenance
- After accidents to enable immediate trafficability until the switch blades are replaced.
- To increase or decrease the radius of the switch gauge in the area of the switch blade.
- For all commonly used flat bottom rails.
- Application for lining and removal possible by one person.
- The unit can be moved easily on the rail.
- The high bending force of 250 kN allows all types of bending work on the switch blade.
- Quick-release coupling to connect hand pump or hydraulic power pack



### TECHNICAL SPECIFICATIONS

### ROBEND M Switch

Drive	Hand pump, two-stage
Operating pressure	max. 700 bar
Compressive force	max. 250 kN
Travel	max. 150 mm
Hydraulic oil synthetic	HLP 46 1.3 l
Dimensions (L x W x H)	930 x 125 x 500 mm
Weight	~74 kg

### ACCESSORIES

#### Profile jaws

7260601010	for S49/S54, 1 set = 2 pieces
7260701010	for uic60, 1 set = 2 pieces
7260801010	for R65, 1 set = 2 pieces
7260551010	for A, 1 set = 2 pieces
7260501010	for BS113A, 1 set = 2 pieces

Other gauges on request.

8002228003	Pressure gauge mounting
8002228004	Wooden transport and storage box, with lockable lid and carrying handles



Profile jaws for rail section S49/S54



Pressure gauge mounting



For bending and lining flat bottom rails up to approx. 60 kg/m (in y-axis), and also optionally for grooved rails (see additional equipment)

- Alloy frame
- Replaceable rail claws
- Return of piston through spring load
- Easy operation in all work positions
- Optionally also available with pressure gauge
- Delivered in a wooden case



## TECHNICAL SPECIFICATIONS

## ROBEND Rail

Compressive force	550 kN
Piston travel	100 mm
Dimensions (L x W x H)	880 x 750 x 240 mm
Weight	~74 kg

## ACCESSORIES

8002238015 Claws for grooved rails with steel pressure piece

### Grooved rail profile blocks

Two profile blocks matching the chosen rail are required

- 8002238006 Distance for RI60
- 8002238016 Distance for RI56
- 8002238017 Distance for NT1
- 8002238018 Distance for NT 3
- 8002238019 Distance for RI59/RI59 N
- 8002238022 Distance for T62



Claw and pressure piece for grooved rail



Grooved rail profile block



**For correcting a narrowed or widened gauge****ROGAUGE Iso 150**

- Can be fitted easily to the foot of the rail
- Adjustment via threaded spindle when in place
- Insulated from rail to rail
- For rails with a base width of 125 mm to 150 mm (e.g. S49/54 and UIC 60)
- Gauge 1435 mm

**ROGAUGE Iso 05**

- 8249900017
- Suitable for fixed track (Distance concrete - rail 35 mm) and gravelled track
- Lightweight: 15 kg
- Isolated
- Gauge 1435 mm

**ROGAUGE**

- Not insulated from rail to rail
- Mounted by wrenching to the two grooved plates
- Adjustment when installed by means of a threaded spindle.
- Gauge 1435 mm



TECHNICAL SPECIFICATIONS	ROGAUGE Iso 105	ROGAUGE Iso 05	ROGAUGE
Dimensions	1850 mm	1733 mm	1350 mm
Weight	~25 kg	~15 kg	~11 kg

**For pulling rails in the ballast**

- For rails S49, S54, UIC60 up to a rail length of 180 m, depending on the composition of the permanent way.
- Can be used for drilled and undrilled rails
- Does not cause impressions or deformations of the rail
- ROSHOE S49, ROESHOE S54, ROESHOE UIC60

Other rail pulling shoes available upon request.



TECHNICAL SPECIFICATIONS	ROSHOE
Dimensions (L x W x H)	350 x 195 x 280 mm
Weight	~38 kg



**For pulling together or pushing apart 2 flat bottom rails in longitudinal direction**

**Standard design:**

- 1 hydraulic cylinder, double-acting, with carrying handle
- 2 clamping heads

Drive: hydraulic power pack or hand pump, see 24.70



## TECHNICAL SPECIFICATIONS

## ROPULL HD

Max. tensile/compressive force	60 kN/80 kN
Piston travel	400 mm
Max. pressure in hydraulic system	100 bar
Dimensions (L x W x H)	
Clamping head S49	190 x 270 x 550 mm
Distance jaws	170 x 40 x 70 mm
Hydraulic cylinder	950 x 120 x 180 mm
Weight	
Basic unit	~77 kg
Hand pump see 8002412010	~7.6 kg
Power pack see 8127500001	~29 kg

## ACCESSORIES

### Distance jaws

Each device equipped with 2 x 2 pieces = 1 set

8002412013	set for UIC 60
8002412011	set form B for S49/S54/35.7/35 kg/Np46/As41
8002412012	set form C for UIC54E/UIC54/BS113A/AS53
8002412014	set for R65
8002412017	set for 115lb
8002412018	set for 136lb/132lb
8129900001	set for Bv50/As50
8129900002	set for Bs80a
8129900003	set for 50 kg
8129900004	set for 60 kg

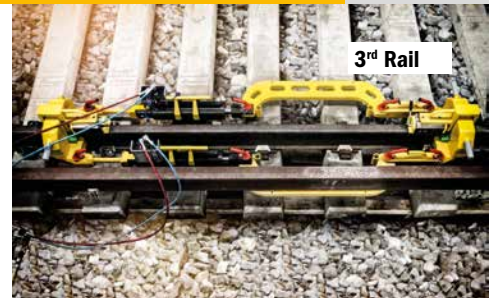
Other distance jaws on request.



Distance jaw set for UIC60

8002412008	Extension 1100 mm for pulling for gaps of over 940 mm and up to 2000 mm
8002412016	Extension 800 mm
8002412010	Hydraulic hand pump including hose set <ul style="list-style-type: none"> <li>• with high-pressure hoses, ~2000 mm long</li> <li>• with quick-release couplings,</li> <li>• max. pressure 100 bar (preset)</li> <li>• hydr. tank volume 1.3 l</li> <li>• precision drain valve</li> </ul>
8127500001	Hydraulic system <ul style="list-style-type: none"> <li>Driven by Briggs &amp; Stratton 4-stroke engine, output 2.6 kW at 3000 rpm</li> <li>• Robust double pump, with automatic changeover from low pressure to high pressure stage</li> <li>• 4-way valve with pressure relief valve, fully mounted on unit</li> <li>• 2 connecting hoses with quick-release couplings</li> <li>• Hydraulic tank volume 5 l</li> <li>• Delivery rate 1.8/0.9 l</li> <li>• Max. pressure 100 bar (preset)</li> <li>• Low noise level (73 dBA)</li> </ul>





Modular concept for positioning rails for welding work.

### ITS BENEFITS. YOUR BENEFITS.

#### Flexibility due to selectable modular system

- Standard cylinder aluminum
- Standard cylinder steel
- Hollow piston cylinder
- Standard versions for optionally draw bar and/or threaded bar system
- 3<sup>rd</sup> rail modules for execution at conductor rails

#### Fast and structure gauge free installation and dismantling

- Safe and easy handling
- Low weight of individual parts
- Simple assembly, no hoist required
- Drive on rail when fitted is possible, depending on the situation

#### Hydraulic energy supply

- Dependent on order
- Two-stage pump with automatic changeover from low-pressure (fast feed) to high-pressure range
- Hydraulic power pack
- Pressure changing unit

#### USP Hollow piston cylinder

- High traveling way 200 mm
- Maximum safety due to forced guidance of the thread rods

More information: Energy/Lighting

TECHNICAL SPEC.	ROSTRESS HD Combi	ROSTRESS HD	ROSTRESS HD Combi	ROSTRESS HD
	STANDARD	HOLLOW PISTON CYLINDER	3 <sup>rd</sup> RAIL	RAIL REPLACEMENT
Tensile force	700 kN	700 kN	700 kN	700 kN
Compressive force	400 kN	/	400 kN	400 kN
Travel	steel 200 mm/alu. 380 mm	200 mm	380 mm	380 mm
Dimensions (L x W x H) in installed condition	2650 x 1120 x 375 mm	2500 x 1010 x 375 mm	3070 x 930 x 375 mm	17300 x 1180 x 375 mm
Drawbar				
Type	Standard	Thread rods	Standard/Horseshoe	Thread rods
Length	~1.50 m	Pieces of 2.5 m or 4 m		2500 mm/4000 mm components
Thread rods optionally combineable				
Weight				
Heaviest individual component	~33 kg	~33 kg	~33 kg	~33 kg
Hydraulic hand pump	~55 kg	~55 kg	~55 kg	~55 kg
Hydraulic power pack	~67 kg	~67 kg	~67 kg	~67 kg
Pressure changing unit	~15 kg	~15 kg	~15 kg	~15 kg
Obstructionless installation possible	yes	yes	no	yes



## ACCESSORIES

- 8749910001 Piston rod guard (for standard-cylinder aluminum)
- 9802470050 Transport box
- 8748980001 Hand trolley for Hydraulic power pack
- 8748980002 toolbox for Hydraulic power pack

### Power Units

- 8749910002 Hydraulic hand pump, for use with one unit  
Two stage pump with automatic changeover from low-pressure (fast feed) to high-pressure (work cycle); 55 kg incl. hose set
- 8743010004 Hydraulic motor unit, with hand pump for one or two units  
Two stage pump with automatic changeover from low-pressure (fast feed) to high-pressure (work cycle); 67 kg; 755 x 525 x 540 mm;  
Hose set for one unit: 87478920004  
Hose set for two units: 87478920004
- 8743051005V Pressure changing unit, for one unit if separate hydraulic hand pump (such as on 2 rail vehicle) is existing. 15 kg; 690 x 240 x 273 mm  
Hose set for one unit: 8747910004

### Hose sets

- 8747910004 From connecting hose to cylinders (if hoses for hydraulic power pack presently)
- 8747920004 connecting hoses to hydraulic power pack  
From connecting hose to cylinders

### Supports (for obstructionless use at different rail profiles)

#### Suitable for following rail types:

- 8740450001 S48-U, UIC54
- 8740460001 NP46, UIC54, 48,5 Kg Griechenland, BS80A
- 8747900004 90RE, 136RE, 140RE, BV50
- 8747900005 115RE, 119RE, 132RE
- 8747900006 U50, U36
- 8747900007 S33, UIC54
- 8747900008 UIC60, S49, S54, AS47, AS50, AS53, AS60, R65, UNI60, UIC50 (50E4)
- 8747900009 NSB40kg



Trolley for hydraulic unit



Toolbox



Hydraulic hand pump



Transport box upon request



Rail supports for obstructionless use



Piston rod guard for standard cylinder aluminum



Drawbar 1,52 m for standard versions



**For moving long-welded rails**

Robust steel design with maintenance-free ball bearings

Other types

- For rails with max. base width of 170 mm or 230 mm
- with 50 mm bent side and base body inner dimension 170 mm or 220 mm


**TECHNICAL SPECIFICATIONS**
**ROCARRY**

Max. load	700 kg
Inside roller dimension	170 mm
Dimensions (L x W x H)	260 x 130 x 120 mm
Weight	~7.3 kg





**To remove stresses from the rail by striking the rail head sides. The vibrations generated in this way destress the rail.**

After removing the fasteners and fishplates, the rails should take up the length which corresponds to the current rail temperature. The machine works on both rails of the track simultaneously with two hammers. This removes stresses existing in the rail. At the same time, non-rail elements, such as rail pads, are loosened.



### ITS BENEFITS. YOUR BENEFITS.

#### Precise & powerful due to

- Height-adjustable hammers which make it possible to set the contact point precisely
- Number of impacts continuously adjustable via gas activation: 45-60 impacts/min

#### User-friendly due to

- LED lighting on both sides which perfectly illuminates the work area
- Can be operated in both directions

#### Safe due to

- Easily lockable guard over hammer unit
- Engine can be started only if the guard is in place
- Dead man's brake on both sides
- Emergency stop push-button

#### Low maintenance requirement due to

- Centrifugal clutch

### TECHNICAL SPECIFICATIONS

### ROLAX P4

Air-cooled four-stroke engine

HONDA GX200

Output

at 3600 rpm 4.1 kW

Dimensions (L x W x H)

2660 x 1240 x 970 mm

Track gauge

1435 mm

Weight

~250 kg

Number of impacts

continuously adjustable via gas activation,  
45 - 60 impacts per rail at an engine speed of 3000 - 3600 rpm





To heat up the rail to the required rail temperature, during the course of the rail neutralization prior to welding the ends of the rail.

### ITS BENEFITS. YOUR BENEFITS.

#### Powerful and precise

- High heat output due to liquid gas removal system
- Precise positioning thanks to stepwise adjustment of the burner height

#### Safety for man and machine

- Integrated hose rupture protection system
- Metered gas supply during the ignition of the gas, achieved by valve at the heating unit
- Heat protection of the superstructure of the track, thanks to the possibility to adjust the height of the burner
- Ergonomics with height-adjustable and foldable handles
- Safety precaution through integrated fire extinguisher

#### Flexibility

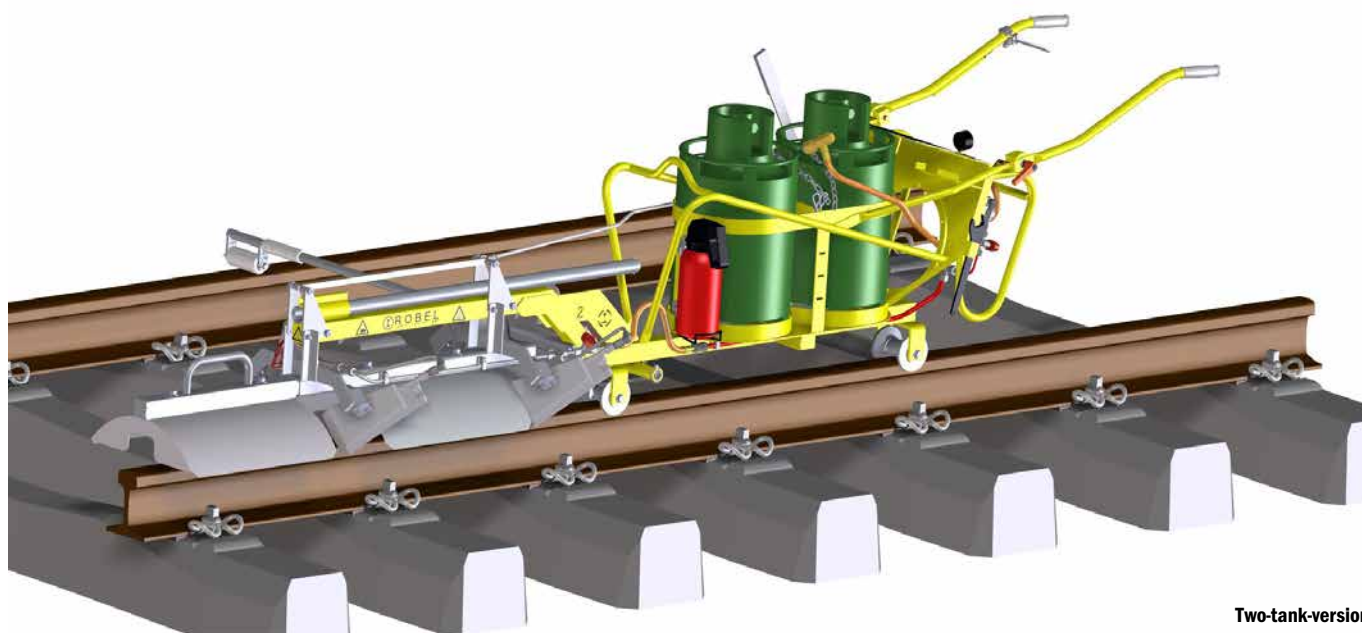
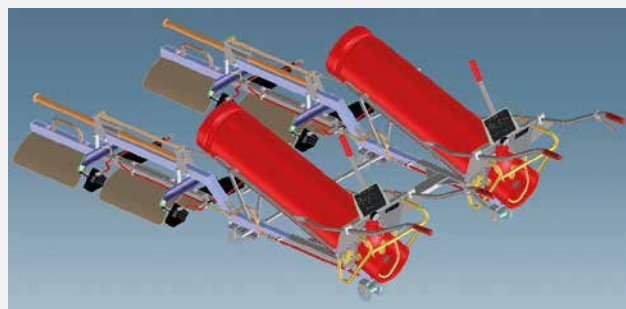
- Optional fail safe brake
- Optional Connecting beam for parallel use of two rail heaters

TECHNICAL SPECIFICATIONS	ROHEAT	ROHEAT
	STANDARD-VERSION	TWO-TANK-VERSION
Dimensions	3400 x 710 x 840mm	3400 x 710 x 840mm
Dimensions for transport	2300 x 590 x 880 mm	2300 x 590 x 880 mm
Weight without gas bottle	83 kg	86 kg
Gas bottle	1 propane tank	2 propane tanks
	33 kg	10.5 kg each
Weight	92 kg	95 kg

## ACCESSORIES

### Connecting beam for parallel use of two rail heaters

8668980003 Connection beam gauge 1000/1435mm



Two-tank-version



# WRENCHING CLIPPING



**Wrenching-family**



**For tightening and loosening nuts and sleeper bolts.**

- With 2-stroke engine which drives the impact wrench mechanism via a centrifugal clutch, a reduction and reversing gearbox.
- Stable, robust design
- Easy operation in all work positions
- No transfer of wrenching moment to operator
- 1 inch square drive to accept the corresponding sockets
- Rotates left/right
- Vibration-damped handles


**TECHNICAL SPECIFICATIONS**
**ROMPACT P2 Portable**

Drive	air-cooled 2-stroke petrol engine
Type	Dolmar PS 7310
Power	3.5 kW (4.8 hp)
Torque	up to 2000 Nm, depending on joint hardness
Dimensions (L x W x H)	670 x 450 x 300 mm
Weight	~23 kg
Weight of a socket	~1.5 kg

**ACCESSORIES**
**SOCKETS**
**Hexagonal**

8003008004	internal hex A/F 22
9002501208	A/F 27
9871033313	A/F 30
9871033309	hex 32
9002501223	A/F 34
9871033314	A/F 35
9871033311	A/F 36
9871033315	A/F 38
8098950100	A/F 39 Special 230 mm
9871033391	A/F 39 hex
9871033304	A/F 41 hex
9871033308	hex 42
9002501224	A/F 46

**Rectangular**

9871033317	rect. 18 x 26
9871033316	rect. 20 x 30
8003008006	rect. 20.5 x 24.5
9871033302	rect. 21 x 28
9871033305	rect. 30 x 22

**Square**

9871033303	sq. 19x19/17x17
9871033318	sq. 21 x 21
9871033306	sq. 22 x 22
9871033319	Socket, sq. 24 x 24

Other sockets can be found on page 69.



**Socket, rect. 24 x 28 for rectangular, socket A/F 39 for hexagonal**



**SDS Plus chuck adapter**

8099910001 SDS-Plus chuck adapter, to drill holes in sleepers

**Sleeper drill bits**

Max. drilling depth 150 mm with SDS-Plus chuck adapter

9002501808	dia. 14 mm
9002501809	dia. 16 mm
9002501810	dia. 18 mm
9002501811	dia. 20 mm
9002501812	dia. 22 mm

8003009006	Extension bar 180 mm/1" mounting
8003009005	Extension bar 330 mm/1" mounting
8003009007	Cardan joint 1" mounting
9909992145	O-ring, circlip to secure socket
9900070056	Dowel pin to secure socket
8003009008	Transport and storage box



For tightening and loosening nuts and sleeper bolts

### ITS BENEFITS. YOUR BENEFITS.

#### Compact and robust

- Centrifugal clutch and change gear
- 1 inch square drive to accept the corresponding sockets
- Battery version 30.20 with 90° adjustable handle, particularly for wrenching brackets
- Immediate usage

#### Ergonomic and flexible

- Height adjustable handle with battery version 30.20
- Low vibration operation



TECHNICAL SPECIFICATIONS	ROMPACKT P2	ROMPACKT P2 Lowvibe	ROMPACKT B
	STANDARD AIR-COOLED	LOW VIBRATION AIR-COOLED	BATTERY
	2-STROKE PETROL ENGINE	2-STROKE PETROL ENGINE	DC ELECTRICAL MOTOR
Type	without damping	with damping	without damping
Output	1.7 kW at 7120 rpm	1,7 kW at 7120 rpm	1600 W
Max. Torque	1700 Nm, depending on joint hardness	1700 Nm, depending on joint hardness	1800 Nm
			Number of tightening cycles: 500 (per 4 seconds)
Dimensions (L x W x H)	680 x 390 x 360 mm	700 x 390 x 360 mm	780 x 510 x 240 mm
Weight	~19.5 kg	~21.3 kg	~19.2 kg (with battery)
Weight socket	~1.5 kg	~1.5 kg	~1.5 kg (weight battery ~6.2 kg)

More information: Battery Technology

### ACCESSORIES

#### Sockets

##### Hexagonal

8003008004 internal hex A/F 22  
9002501208 A/F 27  
9871033313 A/F 30  
9871033309 hex 32  
9002501223 A/F 34  
9871033314 A/F 35  
9871033311 A/F 36  
9871033315 A/F 38  
8098950100 A/F 39 Special 230 mm  
9871033391 A/F 39 hex  
9871033304 A/F 41 hex  
9871033308 hex 42  
9002501224 A/F 46

##### Rectangular

9871033317 rect. 18 x 26  
9871033316 rect. 20 x 30  
8003008006 rect. 20.5 x 24.5  
9871033302 rect. 21 x 28  
9871033305 rect. 30 x 22

##### Square

9871033303 sq. 19 x 19/17 x17  
987103318 sq. 21 x 21  
9871033306 sq. 22 x 22  
9871033319 Socket, sq. 24 x 24

Other sockets can be found on page 69.

8003009006 Extension bar 180 mm/1" mounting  
8003009005 Extension bar 330 mm/1" mounting  
8003009007 Cardan joint 1" mounting  
9909992145 O-ring, circlip to secure socket  
9900070056 Dowel pin to secure socket  
8003010003 Transport and storage box



Socket, rect. 24 x 28 for rectangular, socket A/F 39 for hexagonal



SDS Plus chuck adapter

8099910001 SDS-Plus chuck adapter, to drill holes in sleepers  
**Number of drillings: Up to 300 drillings of ROMPACKT B with 18 mm drill and 700 W battery output. The conversion from wrenching to drilling takes 25 seconds.**

#### Sleeper drill bits

Max. drilling depth 150 mm with SDS-Plus chuck adapter  
9002501808 dia. 14 mm  
9002501809 dia. 16 mm  
9002501810 dia. 18 mm  
9002501811 dia. 20 mm  
9002501812 dia. 22 mm

# MAXIMUM PERFORMANCE. ACCURATE DOCUMENTATION.



## ITS BENEFITS. YOUR BENEFITS.

### Time savings, highly increased quality

- Patented: measurement with integrated torque spanner
- Automatic – precise– controlled
- No final tightening with torque spanner
- Torque is measured directly at the wrenching motor, it is not calculated via the hydraulic pressure.

### Intelligent electrical control

- Learning control with nominal/actual adjustment
- Consistently high wrenching precision
- No manual recalibration on the worksite
- Annual check in own workshop

### Reduces labour cost to minimum, makes wrenching easy

- Faster wrenching at 205 rpm
- High tightening/loosening torque for rusty rail fastenings and for dismantling screws without stalling the engine
- Wrenching mode selection at the push of a button

### Work result fully documented

- Recording of each wrenching process
- Captures wrenching frequency, kilometre marking and wrenching modes
- Recognises defective screws and damaged threads
- Output of coded results (log) via USB
- Auditable performance protects against future claims

### Carefully packaged

- Electrical lines and sensors protected in frame and handles
- Aluminium covers
- Increased operational safety - fewer downtimes
- Fewer spare parts and repairs
- No capital tied up in replacement machines

### Added value with the option of

- GPS link for precise information of working position in order to optimise reporting

## PRECISION WRENCHING.

### The next generation.

The fully hydraulic Precision Power Wrench ROBEL 30.73 PSM tightens and loosens every screw connection precisely to the specified torque. The combination of high spindle speed and high loosening torque accelerates the wrenching process, makes work easier and reduces costs.

The 30.73 PSM consistently documents accurate measuring results which are captured exactly where they are taken. No longer required to undertake follow up checks.

## FOCUS ON OPERATOR

### Symbiotic relationship of ergonomics and efficiency

Ergonomic design safeguards the long-term retention of the workforce. Employees benefit from better health, companies benefit from greater efficiency.

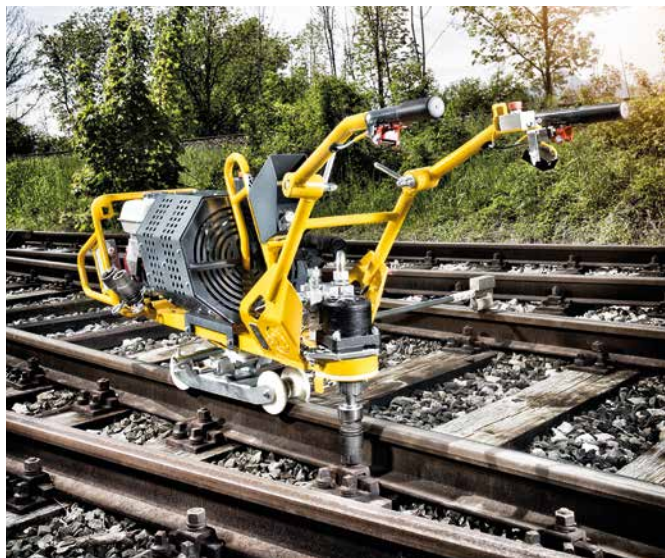
### The ROBEL 30.73 PSM provides

- Maximum operator safety and comfort
- Increase in work quality

### due to:

- Operator posture minimising discomfort
- Weight of under 100 kg
- Optimum machine balance
- Adjustable handles
- Safe 2-hand control





TECHNICAL SPECIFICATIONS	ROWRENCH P4 Rec	ROWRENCH E
Drive	Air-cooled 4-stroke petrol engine	Elektromotor, Drehstrom
Type	HONDA GX200	
Output	4.3 kW at 3,600 rpm	400 V 50 Hz
Wrenching parameters	Speed (tightening and loosening) adjusts automatically (max. 205 rpm)	Speed (tightening and loosening) adjusts automatically (max. 238 rpm)
Loosening torque	max. 900 Nm	max. 900 Nm
	Tightening torque depending on the machine version max. 500 Nm	Tightening torque max. 500 Nm
Dimensions (L x W x H)		
Transport position	1530 x 470 x 670 mm	1530 x 470 x 670 mm
Working position	2090 x 470 x 960 mm	2090 x 470 x 960 mm
Weight	~99 kg machine ~7 kg travelling gear ~3.5 kg outrigger	~116 kg machine ~7 kg travelling gear ~3.5 kg outrigger

## ACCESSORIES

7739910001 Travelling gear  
7730800001 Outrigger track gauge 1435mm  
or  
7730750001 Four-wheel travelling gear  
7738950140 Extension 100mm with quick-chuck

7738930110 Penholder for marker  
7738930120 Bottle holder  
8328980100 Box for traversing gear  
Covering sheet  
7738950110 Torque wrench adapter  
9002501350 Torque wrench constant  
Oil change kit  
9008110846 USB-stick (Only original is allowed to be used)

Other sockets (also articulated for straight output drive) can be found on page 69.

### Sockets, articulated

#### Hexagonal articulated, with nut ejector, complete with driving head, wrenching part, compression spring

8003062054 Socket hex SW 30 O-ring cylindrical pin  
8003062064 Socket hex SW 32  
8003062014 Socket hex SW 33  
8003062033 Socket hex SW 34

9891368034 Socket hex SW 35  
8003062055 Socket hex SW 36  
8003062049 Socket hex SW 38  
8003062001 Socket hex SW 39  
8003062051 Socket hex SW 40  
8003062017 Socket hex SW 41  
8003062039 Socket hex SW 42  
8003062008 Socket hex SW 44  
8003062056 Socket hex SW 46

#### Rectangular articulated, without ejector

8003062059 Socket rect. 26 x 18  
8003062047 Socket rect. 24 x 20  
8003062070 Socket rect. 24,5 x 20,5  
8003062005 Socket rect. 28 x 21  
8003062048 Socket rect. 30 x 22  
8003062046 Socket rect. 30 x 20

#### Square articulated, without ejector

8003062043 Socket sq. 18 x 18  
8003062004 Socket sq. 19 x 19  
8003062044 Socket sq. 24 x 24  
8003062040 Socket sq. 23 x 23  
8003062061 Socket sq. 22 x 22  
8003062063 Socket sq. 32 x 32



**For the simultaneous, fully automatic tightening or loosening of up to 8 rail fastenings in one work step, and for the synchronous tightening of clamping devices**

- High synchronous and torque accuracy
- Efficient and precise wrenching mechanism
- High working speed
- Compact aluminium frame with 4 screw shuttles and 8 fully hydraulic screw drives
- Rail tongs to automatically fix the wrenching unit during work
- Display for setting, indicating and checking the torques

- Electronic data logger
- Optional data storage and evaluation using PC
- Fast and easy working in obstructionless position
- Can be combined with various energy supplies
- Continuous travel of energy supply during wrenching operation, designed as satellite wrenching unit positioned by linear drive
- Wrenching unit with lights
- Remote control

Accessories on request.

## TECHNICAL SPECIFICATIONS

## ROWRENCH 8Synch Unit

Working speed	~600 m/h
Wheel base	1950 mm
Diameter, running wheels	340 mm
Combination with various energy supplies	ROBEL track vehicles or similar
	<ul style="list-style-type: none"> <li>• excavator with 2-way unit</li> <li>• 2-way vehicle, e.g. Unimog</li> <li>• Integration into work train</li> <li>• Independent machine, self-propelled</li> </ul>
Energy requirement	electric 24 V, DC/60 Amps
Hydraulic output required	60 kW
Hydrostatic drive	0 - 1.0 km/h
Weight	~2300 kg





**For tightening or loosening sleeper, hook and fishplate bolts.**

### ITS BENEFITS. YOUR BENEFITS.

#### Optimum results

- High torque
- Electronic control for precise observance of set values
- Precise torque settings via potentiometer on control panel and visual check by operator
- 2-speed gearbox with helical gears for high efficiency
- Wrenching step carried out with push-button. Wrenching stopped automatically, thus highest accuracy and overload protection.
- Electric disc clutch for maximum durability

#### User-friendly

- Optimum illumination of working area with LED illumination of socket integrated into the gear case
- Quick-change chuck
- Protective engine frame with carrying handles and holder for 2 sockets
- It is possible to work without outrigger due to the extremely low centre of gravity.

#### Low maintenance requirement

- Due to no-maintenance electronic disc clutch
- Hardly any wear due to articulated sockets and non-friction roll behaviour for angled fasteners

#### Applications

Can be used for all wrenching operations for various types of track construction and gauges





## TECHNICAL SPECIFICATIONS

## ROWRENCH P4 RKS

Drive	air-cooled 4-stroke petrol engine
Type	HONDA GX 200
Output	4.3 kW at 3600 rpm
Spindle speed	
No-load speed	200 rpm
Load speed	70 rpm
Tightening torque indicator	max. 999 Nm
Adjustment range for screwing in	150 Nm to 350 Nm/420 Nm to 999 Nm
Loosening/tightening torque	max. 1000 Nm
Dimensions (L x W x H)	2030 x 600 x 750 mm
Weight without outrigger (outrigger 4 kg)	~92 kg

## ACCESSORIES

### Transverse travelling gear

- 8050750001 RKS, four-wheel, instead of two-wheel monorail trolley with outrigger, gauge 1435 mm, incl. extension 100 mm square output drive
- 8003082015 Four-wheel, gauge 1435 mm
- 8338950150 Extension, 100 mm, square output drive  
Extension needed only if transverse travelling gear is ordered and supplied at a later time. When ordering a transverse travelling gear with the power wrench, the extension is already included in the price.
- 8329900037 Parking brake for transverse travelling gear
- 9000100065 Protective hood (tarpaulin), bright yellow, made of Trevira fabric, PVC coated, hemmed. With nickel-plated eyelets on both long sides.  
Dimensions: 1900x600x600 mm

### Fish bolt spanner

- 8003182001 31.82 one-sided design; without socket
- 8003062052 Socket, hex A/F 39 SRAUG one-sided design; without socket

Other sockets (also articulated for straight output drive) can be found on page 69.



Fish bolt spanner 31.82



Hood-shaped cover



Socket, hex. A/F 39 Sraug



## WITH PROVEN TECHNOLOGY WEAR RESISTANT WRENCHING



### ITS BENEFITS. YOUR BENEFITS.

#### Reliable wrenching method, precise results

- Uniform repeat wrenching due to precisely adjustable torque
- Checking of torque on pressure gauge display
- Selection between two gears depending on stiffness of screw
- Fast changeover to maximum torque without changing the torque setting

#### Robust construction, minimised maintenance costs

- Long service life due to ROBEL high-performance clutch
- Low maintenance costs due to permanent oil lubrication of clutch in oil bath

#### Ergonomic design

- Low weight and compact size with folding guide handles
- Large field of view due to LED illumination of surrounding area
- Height-adjustable guide handles

#### Flexible use

- Working possible without outrigger due to low centre of gravity
- Wrenching of all screwed connections on any type of track as length of spindle can be adapted
- Quick-change chuck for fast changing of sockets

TECHNICAL SPEC.	ROWRENCH P4 200 2.0	ROWRENCH P4 270 2.0	ROWRENCH E 2.0	ROWRENCH D 2.0
Drive	Air-cooled 4-stroke petrol engine	Air-cooled 4-stroke petrol engine	Electric motor, 3-phase	Air-cooled 4-stroke diesel engine
Type	Honda GX200	Honda GX200	400 V, 50 Hz	Hatz 1B20
Output	4.3 kW at 3600 rpm	6.3 kW at 3600 rpm	4 kW at 2880 rpm	4.9 kW at 3800 rpm
Spindle speed				
No-load speed, max.	200 rpm	190 rpm	152 rpm	200 rpm
load speed	71 rpm	67 rpm	55 rpm	71 rpm
Adjustable tightening torque	from 140 to 300 Nm	from 140 to 300 Nm	from 140 to 300 Nm	from 140 to 300 Nm
Momentary loosening torque	up to 1000 Nm	up to 1000 Nm	up to 1000 Nm	up to 1000 Nm
Travelling gear	2-rail transverse travelling gear, available for all gauges 1-rail travelling gear with outrigger, available for all gauges			
Dimensions (L x W x H)	1900 x 600 x 600-800 mm	1950 x 592 x 600-800 mm	1910 x 475 x 600-800 mm	1900 x 600 x 600-800 mm
Transport position (L x W x H)	1490 x 600 x 575 mm	1542 x 592 x 575 mm	1500 475 x 575 mm	1490 x 600 x 575 mm
Weight	~93 kg	~105 kg	~116 kg	~105 kg

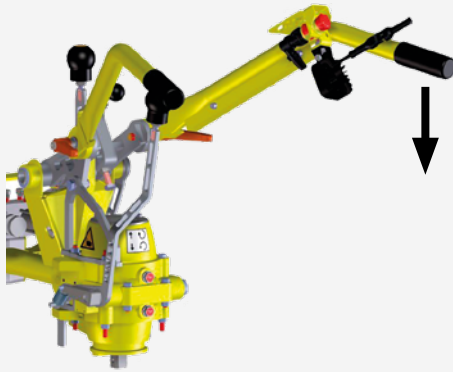


## CONFIGURATIONS

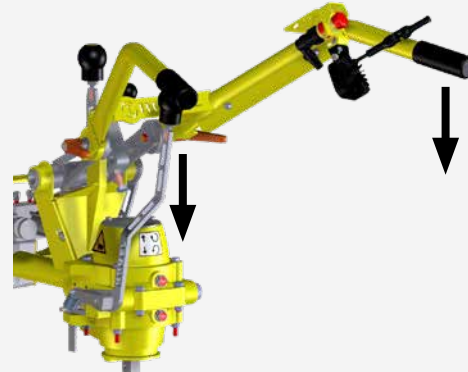
### 1. CHOICE OF DRIVES (see Technical Specifications)

### 2. CHOICE OF HEIGHT-ADJUSTABLE GUIDE HANDLES

a. for depressing on right-hand side only



b. for depressing on both sides



### 3. CHOICE OF TRAVELLING GEAR AND GAUGE

a. monorail travelling gear with outrigger



b. transverse travelling gear, four wheels



c. transverse travelling gear with cant



### 4. CHOICE OF SOCKETS

a. one piece



b. articulated



## ACCESSORIES

### Sockets, see page 69

#### Fish bolt spanner

8003182001 31.82 one-sided design; without socket

#### Travelling gear with rubber wheels

8320820001 for working in areas without rails

#### Socket holder

8328900004 to fit sockets near spindle

#### Toolbox

8329910001 Toolbox combined with transverse travelling gear

#### Tarpaulin

9000100065 for best protection from the weather with eyelets (yellow)

#### Torque meter

8869900006 Torque meter 86.12 to calibrate the machine

7738960001 Transport frame

8321570120V Handles



Travelling gear with rubber wheels



Transport frame





**For all drilling and wrenching tasks that arise in track construction. Especially suitable for dowel renovation.**

- Ideal for all fast wrenching tasks on rails, switches and other locations
- Powerful, robust design
- Easy operation in all work positions
- No transfer of wrenching moment to operator
- Rotates left/right
- Mechanical emergency activation of servo hydraulics
- LED work light
- With engine stop

TECHNICAL SPECIFICATIONS	ROWRENCH <b>P4 Drill</b>	ROWRENCH <b>E Drill</b>
Drive	air-cooled 4-stroke petrol engine	electric motor, 3-phase
Type	Honda GX 270	400 V, 50 Hz
Output	6.3 kW at 3600 rpm	4 kW at 2870 rpm
Spindle speed		
No-load speed	175 rpm	145 rpm
Load speed	67 rpm	55 rpm
Max. drill bit diameter	38 mm	
Max. drilling depth	180 mm	
Dimensions (L x W x H)	2100 x 600 x 750 mm	
Weight incl. outrigger	~123 kg	~139.5 kg

## ACCESSORIES

### Wooden sleeper renovation

- 1) 8913839005 Taper sleeve
- 2) 9002501278 Drill bit dia. 43 mm
- 3) 8003083002 Tool holder to hold tools with a square drive for wooden sleeper
- 4) 9891089217 Countersink for wooden sleeper dowel 15
- 5) 9891089219 Screw tap for wooden sleeper, sleeper dowel 15
- 6) 9891089227 Dowel turn-in mandrel for wooden sleeper, sleeper dowel 15
- 8) 9891085161 Turn-in tool no. 5 (spiral dowel no. 5)
- 9) 8003083003 Adapter with chuck for sleeper drill bit (wood, 96.01)
- 10) 8003083006 Depth stop



### Concrete sleeper renovation

- 11) 8910839010 Taper sleeve
- 12) 9002501512 Drill bit dia. 29 mm, MK3
- 13) 8003083002 Tool holder to hold tools with a square drive
- 14) 8333550110 RD29 for concrete sleeper, sleeper dowels 9+13
- 15) 9891089288 Left-hand extractor for concrete sleeper, sleeper dowels 9+13
- 16) 9891089225 Dowel extraction mandrel for concrete sleeper, sleeper dowels 9+13
- 17) 9891089226 Dowel turn-in mandrel for concrete sleeper, sleeper dowels 9+13



### Replacement of corrugated dowels

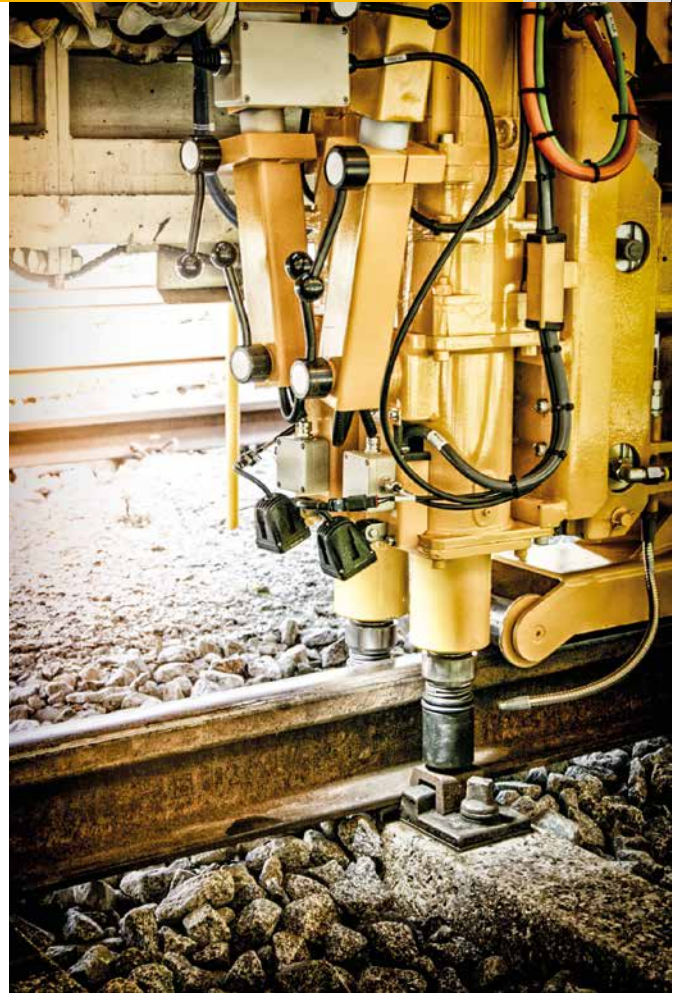
- 18) 8910839015 Taper sleeve
- 19) 8003062052 Socket, hex A/F 39 SRAUG
- 20) 9002501519 dia. 38 mm MK 4
- 21) 9002501548 dia. 27 mm MK 3
- 22) 9002501513 dia. 30 mm MK 3
- 23) 8003083002 Tool holder to hold tools with a square drive
- 24) 8333550120 RD38 for wooden sleeper or corrugated dowels 1+2
- 25) 9891089218 Left-hand extractor for wooden sleeper corrugated dowels 1+2



- 8330750003 Transverse travelling gear 1435 mm
- 8329900037 Parking brake
- 8329910001 Ballast box (for transverse travelling gear)
- 8003182001 Fish Bolt Spanner 31.82, one-sided design; without socket







**For synchronous tightening or loosening for all wrenching tasks required in track construction within the ROBEL Mobile Maintenance Unit**

### ITS BENEFITS. YOUR BENEFITS.

#### Precise & efficient

- Data recording with patented wrenching software
- GPS data logger
- Torque repeatability ~3% (independent of joint hardness and rail fastener type)
- High wrenching quality independent of operator

### TECHNICAL SPECIFICATIONS

### ROWRENCH **Servo**

Torque	1000 Nm
Continuous tightening torque	300 Nm
Continuous loosening torque	300 Nm
Spindle speed	~230 rpm
Dimensions (L x W x H) (Spindle application with tool carrier)	1670 x 1300-2055 x 2100-2755 mm
Weight per servo spindle	~65.5 kg



- For ROBOL 30.82 and 30.82 RKS Universal Power Wrenches, 30.83 and 30.71 Wrenching Machines
- Single-sided design
- Weight ~8.8 kg


**To set and check the torque of power wrenches**

- Quick fitting to the quick-change chuck of ROBOL power wrenches
- Drive socket square 3/4 inch
- Reference mark for torque 150/200/250 Nm
- Weight ~5 kg

**ACCESSORIES**

- 8869900002 Wrenching tool A/F 36
- 8008612003 Wrenching tool A/F 39
- 9002500143 Wrenching tool A/F 41
- 8008612004 Wrenching tool rect. 21X28


**To set and check the torque of power wrenches**

By layering the disc springs different wrenching torques (joints) can be simulated. E.g. permanent way old/new, W permanent way rail clip 14 old/new, etc.

- Fastening on track with clamping screw
- Obstructionless
- Measuring range 150 to 450 Nm
- 700 x 305 x 250 mm
- Weight ~24.8 kg





## PATENTED TOOLS.

Powerful clipping of FE/FC (FCx).



ROCLIP FC and FE

### ITS BENEFITS. YOUR BENEFITS.

#### Wide range of application, high performance

- Installing and removing of FC and FE (FCx) type Fastclips
- Quick and easy to change from installing to removing operation using patented tool
- Load relief to operator due to rollers on the clipping module to optimize center of weight of machine in version FE/FCx

#### Strong machine, easy clipping

- Clipping is triggered by a push-button on the handle
- Hassle free operation without time-consuming adjustments
- Works on heavily corroded clips due to strong high-performance components

#### Flexible and practical use

- Handles can be individually adjusted in height to the operator preference
- Optimal view of the work area, also at night thanks to LEDs mounted on the handles

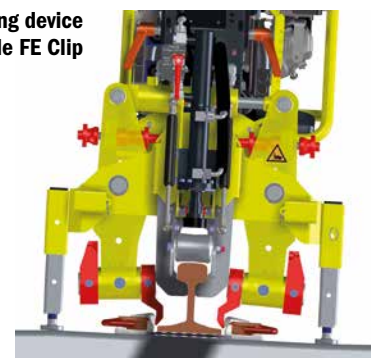
#### Optional Sleeper lifting unit

- Slight and fast lifting of low-lying sleepers



ROCLIP P4 FC

Sleeperlifting device  
Example FE Clip



TECHNICAL SPECIFICATIONS	ROCLIP P4 FC	ROCLIP D FC	ROCLIP P4 FC/FE (FCx)
Drive	4-stroke petrol engine	diesel engine	4-stroke petrol engine
Type	HONDA GX 200	Hatz 1B30	HONDA GX 200
Output	4.3 kW at 3600 rpm	5.0 kW at 3600 rpm	4.1 kW at 3800 rpm
Weight machine			
Without sleeper lifting device	~134 kg	~212 kg	~163 kg
Weight machine			
With sleeper lifting device	~155 kg	~233 kg	~170 kg
Outtrigger gear	~46 kg	~46 kg	~46 kg
Dimensions (L x W x H)	1950 x 620 x 1010 mm	1950 x 620 x 1010 mm	1950 x 650 x 1010 mm
Outtrigger gear for 1435 mm gauge (other gauges are available on request)			

## ACCESSORIES

### Available Fastclip tools

#### VERSION 1 WITHOUT SLEEPERLIFTING DEVICE

##### Clip application

- 8254220001 Clip 125
- 8254220002 Clip 135
- 8254220007 Wide Clip 125
- 8254220008 Wide Clip 135

##### Clip removal

- 8254220019 Standard
- 8254220013 Without stop
- 8254220009 Simple design, smooth
- 8254220004 With nose
- 8254220003 Removal disc, general
- 8254220010 Removal disc, wide, general

#### VERSION 3 WITH SLEEPERLIFTING DEVICE

##### Clip application

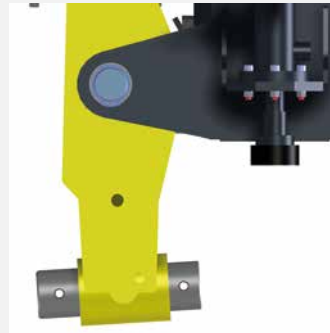
- 8254220011 Clip 135
- 8254220012 Clip 125

##### Clip removal

- 8254220019 Standard
- 8254220013 Without stop
- 8254220009 Smooth
- 8259900008 Transverse travelling gear. Please request info for gauges other than 1435 mm.
- 8259910005 Parking brake for transverse travelling gear
- 9000100065 Hood-shaped cover
- Converter for clips of different length (from 125 mm to 135 mm and vice versa)

##### Insertion tool for all types of application

- 8254220180 125 clip with lifting point for sleeper lifting
- 8254220170 135 clip with lifting point for sleeper lifting
- 8254220100 125 clip without sleeper lifting
- 8254220120 135 clip without sleeper lifting



Hood-shaped cover

## ROCLIP Clipping Device

34.90

### SLEEPER LIFTING UNIT

To manually lift sleepers

#### TECHNICAL SPECIFICATIONS

#### ROCLIP M Lift

Length	1000 mm
Weight	~8 kg



### INSERTION TOOL

To manually insert Pandrol Fastclips

#### TECHNICAL SPECIFICATIONS

#### ROCLIP M Extract

Length	1000 mm
Weight	~8 kg



### INSERTION TOOL

To manually insert Pandrol Fastclips

#### TECHNICAL SPECIFICATIONS

#### ROCLIP M Insert

Length	1100 mm
Weight	~10 kg





**Ratchet spanner for clockwise and counter-clockwise rotation of flat fish-plates, for hexagon nuts, A/F 39, with 2 lever arms.**

- Without inserts, for flat fish-plates; hexagon nut A/F 39 mm
- With inserts for angle fish-plates and flat fish-plates; hexagon nuts A/F 39 mm and other dimensions

#### TECHNICAL SPECIFICATIONS ROTOOL Bolt One

Length	730 mm
Weight	~6.3 kg



#### ACCESSORIES

##### Spanner inserts

For use with angle fish-plates (2 pcs are required)

9891040135	A/F 32
9891040137	A/F 33
9891040139	A/F 34
8910440145	A/F 36

9891040147	A/F 38
8910440151	A/F 39
9891040155	A/F 42
9891040161	A/F 45
9891040163	A/F 46



Insert A/F 39

**For use with fish-plates and for general wrenching work**

##### Light-weight, robust & flexible

- Ratchet spanner in partial aluminium construction
- Sturdy coarse ratchet
- Inserts reversible for left-hand/right-hand rotation
- Locking with ball stop
- Socket adapter 1"



#### TECHNICAL SPECIFICATIONS

#### ROTOOL Bolt Two

Length	730 mm
Weight	~6.3 kg

#### ACCESSORIES

##### Sockets

9002501704	A/F 36
9002501703	A/F 38
9803502002	A/F 39
9002501694	A/F 41

Other sockets can be found on page 69.



Socket A/F 36

**Socket Wrench for selective wrenching.**
**Sleeper bolts**

- ROTOOL Socket Sq 36.01 (square head DIN 5913, A/F 17 x 17 / 19 x 19 mm)
- ROTOOL Socket Rect 36.02 (square head DIN 5914, A/F 18 x 25 / 21 x 28 mm)

**Nuts**

- ROTOOL Socket Hex 36.03 (hex head, e.g. DIN 3129, A/F 33 oder 39 mm)

**Universal wrenching**

- ROTOOL Socket Vario 36.04 with 1 inch universal square mounting position for flexible use various sockets.

AF = width of nuts or sockets across flats



Universal square mounting position



TECHN.SPEC.	ROTOOL Socket Sq	ROTOOL Socket Rect	ROTOOL Socket Hex	ROTOOL Socket Vario
Height	980 mm	980 mm	980 mm	950 mm
Width	980 mm	750 mm	980 mm	750 mm
Weight	~6,5 kg	~6,5 kg	~7,4 kg	~6,2 kg

The support lever is an installation aid which prevents plastic dowels from being raised from their installation positions while the sleeper bolt is removed for the required maintenance work.

38.01 Support lever for rail type S49/54

38.01 Support lever for rail type UIC60



TECHNICAL SPECIFICATIONS	ROTOOL Fix UIC 60	ROTOOL Fix S49/54
Length	~1500 mm	~1500 mm
Width	200 mm	170 mm
Height	90 mm	90 mm
Weight	~5,2 kg	~5,2 kg



## Sockets, one-piece

in standard dimensions

For ROBEL power wrenches 30.71 and 30.82  
(with spherical wrenching spindle seat)

### Hexagonal, one-piece, e.g. "K" permanent way, with nut ejector

8003082039	Socket, hex SW 35 with ejector
8003082075	Socket, hex SW 36 with ejector
8003082038	Socket, hex SW 38 with ejector
8003082036	Socket, hex SW 39 with ejector
8003082074	Socket, hex SW 40 with ejector
8003082071	Socket, hex SW 41 with ejector

### Rectangular, one-piece, e.g. "W" permanent way, without ejector

9871033020	Socket, rect. 30 x 20
9871033022	Socket, rect. 30 x 22
9871033072	Socket, rect. 24.5 x 20.5
9871033070	Socket, rect. 28 x 21
9871032618	Socket, rect. 26 x 18

### Square, one-piece, without ejector

9871033080	Socket, sq. 19 x 19
9871033200	Socket, sq. 21 x 21
9871032123	Socket, sq. 23 x 23
9871032200	Socket, sq. 22 x 22
9871032400	Socket, sq. 24 x 24
9871032540	Socket, sq. 25.4 x 25.4 (1")
8710302118	Socket, sq. 1 1/8" octagonal
9871032427	Socket, sq. 27 x 27

### For fish bolt spanner 31.82

Wrenching part seat hex 40, complete with ejector, compression spring, O-ring and cylindrical pin.

8003062016	Socket, hex SW 36 SRAUG
8003062062	Socket, hex SW 38 SRAUG
8003062052	Socket, hex SW 39 SRAUG
8003062060	Socket, hex SW 40 SRAUG
8003062058	Socket, hex SW 41 SRAUG
8003062065	Socket, hex SW 42 SRAUG
8003062072	Socket, hex SW 46 SRAUG
8003062073	Socket, octagonal 1 11/16" octagonal



## Sockets, articulated

Complete with driving head, wrenching part, compression spring, O-ring and cylindrical pin.

For ROBEL power wrenches 30.42, 30.74, 30.83 and 30.82 RKS, 30.73 (with straight wrenching spindle seat)

### Hexagonal articulated, with nut ejector

8003062054	Socket, hex SW 30
8003062064	Socket, hex SW 32
8003062014	Socket, hex SW 33
8003062033	Socket, hex SW 34
9891368034	Socket, hex SW 35
8003062055	Socket, hex SW 36
8003062049	Socket, hex SW 38
8003062001	Socket, hex SW 39
8003062051	Socket, hex SW 40
8003062017	Socket, hex SW 41
8003062039	Socket, hex SW 42
8003062008	Socket, hex SW 44
8003062056	Socket, hex SW 46

### Rectangular articulated, without ejector

8003062059	Socket, rect. 26 x 18
8003062047	Socket, rect. 24 x 20
8003062070	Socket, rect. 24.5 x 20.5
8003062005	Socket, rect. 28 x 21
8003062048	Socket, rect. 30 x 22
8003062046	Socket, rect. 30 x 20

### Square articulated, without ejector

8003062043	Socket, sq. 18 x 18
8003062004	Socket, sq. 19 x 19
8003062044	Socket, sq. 24 x 24
8003062040	Socket, sq. 23 x 23
8003062061	Socket, sq. 22 x 22
8003062063	Socket, sq. 32 x 32





# LIFTING LOADING TRANSPORTING



**ROALIGN**

**Hydraulic Track Lifting Machine with Slewing Device**



## ROLIFT Rail Lifting Device

40.05

**For lifting and fixing rails, e.g. S49, S54 and UIC60, via hand lever**

- To be used for replacing rail pads and grooved base plates
- For all types of track used by DB
- For other special types of track upon request
- Hand lever equipped with above-dead-centre safety device
- Additional locking hook



### TECHNICAL SPECIFICATIONS

### ROLIFT 0.75

Max. load	750 kg
Lifting height	4 different heights adjustable 2 heights for grooved plate support, 2 heights for sleeper support
Dimensions (L x W x H)	1100 x 400 x 70 mm
Weight	~15 kg

## ROCARRY Rail Carrying Tongs

42.02

**For carrying and lifting rails**



### TECHNICAL SPECIFICATIONS

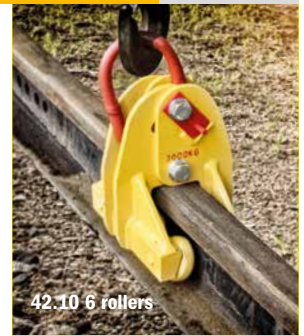
### ROCARRY M Rail

Rail head width up to	80 mm
Rail head height up to	70 mm
Dimensions (L x W x H)	1050 x 70 x 400 mm
Weight	~7.5 kg

**For lifting and transporting rails**

The rail is only allowed to be lifted or lowered vertical.

- Rail Mover 43.02, 4 carrying rollers
- Increased with suspension eye, 6 carrying rollers



42.10 6 rollers

TECHNICAL SPEC.	ROCARRY Vignol 0,5	ROCARRY Vignol 1,5	ROCARRY 3rd 1,5	ROCARRY Vignol 3
Perm. carrying capacity	0.5 t	1.5 t	1.5 t	3 t
Suitable for	small flat bottom rail	flat bottom rail	conductor rail	flat bottom rail
Dimensions (L x W x H)	200 x 170 x 230 mm	270 x 165 x 300 mm	270 x 165 x 290 mm	270 x 220 x 300 mm
Weight	~6.5 kg	~17.5 kg	~14 kg	~24.7 kg
Rollers	4 rollers	4 rollers	4 rollers	6 rollers

**For lifting and transporting rails**

- For Rail Loaders 40.44 and 40.51

TECHNICAL SPECIFICATIONS	ROCARRY 1,5 Latch
Perm. carrying capacity	1.5 t
Suitable for	flat bottom rail
Dimensions (L x W x H)	100 x 165 x 300 mm
Weight	~5.4 kg


**For lifting and transporting rails**

- with suspension eye (crane hook securing) and locking device,
  - sturdy design
  - with 3 lifting claws
  - Carrying capacity 3 t
- Opens automatically when touching down on rail head
- Designs available for different types of flat bottom rails.  
Ask your ROBEL contact about your specific type of flat bottom rail.



TECHNICAL SPECIFICATIONS	ROCARRY 3 Eye
Perm. carrying capacity	3 t
Suitable for	grooved rail, thick web rail
Dimensions (L x W x H)	120 x 130 x 400 mm
Weight	~10.9 - 12.8 kg



# ROMOVE

# Rail Mover

43.02

**For lifting and moving rails of any length longitudinally and laterally when used with an appropriate number of devices. Recommended distance between devices approx. 10 m.**

- Consists of 2 supports, 1 cross beam, 1 travelling crab and 1 pair of roller carrying tongs
- Support with holes for adjusting height of cross beam by locking pin, with fold-down carrying handles, wooden feet and running rollers
- Easy to dismantle for transport to and from the work site
- ROBEL 41.04 Travelling Crab with rack and pinion thread, safety crank and load pressure brake, ROBEL 42.10 Roller Carrying Tongs self-clamping, with hardened running rollers for moving rails longitudinally



## TECHNICAL SPECIFICATIONS

ROMOVE 1,5

Permissible lifting capacity max.	1.5 t			
Vertical travel	800 mm			
Running distance of travelling crab	1900 mm			
Support width	2240 mm			
max. head width of rail	75 mm			
max. head height of rail	45 mm			
Designation	ROBEL 41.04	42.10 Roller	Cross beam	Support
	Travelling crab with rack and pinion and hook	Carrying Tongs		
Dimensions (L x W x H)	1150 x 360 x 310 mm	305 x 270 x 165 mm	2450 x 210 x 130 mm	1180 x 700 x 130 mm
Weight	~24 kg	~16 kg	~45 kg	~16 kg

## ACCESSORIES

8379910001 Extension 325 mm



# ROMOVE

# Rail Mover

43.03

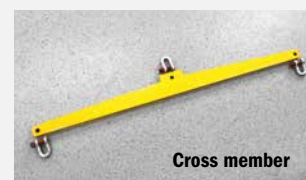
**For lifting and moving rails longitudinally and laterally**

- Compact device in light-weight construction, standard design in aluminium
- Particularly suited for the safe, quick and efficient moving of fitted pieces, e.g. in case of fractured rails, for insulated joints, etc.
- Consists of 2 supports, 1 cross beam, 1 travelling crab with hydraulic lifting device
- The device can be dismantled for transport and can be re-assembled easily and quickly as required



TECHNICAL SPECIFICATIONS		ROMOVE 0,5 Alu
Permissible lifting capacity max.		500 kg
Vertical travel		350 mm
Running distance of travelling crab		900 mm
Support width		1350 mm
Max. head width of rail similar to rail type UIC60 head width		75 mm
Max. head height of rail similar to rail type UIC60 head height		45 mm
Dimensions (L x W x H)		1650 x 750 x 1400 mm
Weight basic device		~27 kg

ACCESSORIES	
8428420012	<p>Rail Carrying Roller Tongs ROBEL 42.10 Compact In specially low construction; aluminium design, with suspension pin; self-clamping with hardened running rollers</p> <ul style="list-style-type: none"> <li>• Roller distance 150 mm</li> <li>• For moving rails longitudinally</li> <li>• Permitted carrying capacity 0.5 t</li> </ul>
8378100001	<p>Cross member, when using 2 sets of rail carrying roller tongs. For picking up fitted pieces (e.g. insulated joint); length of cross member 1,150 mm</p>







**For continuous gradual positioning of rails to the desired track gauge. Hydraulic rail tongs grip the rail heads, hold them securely without turning or tilting and move the rails outward or inward.**

### ITS BENEFITS. YOUR BENEFITS.

#### Profitability

- High performance, especially for long rails
- Automatic adjustment to the track gauge during travel
- Ready for use straight away
  - For travel to and from the work site the carrier frame is slewed into the permitted wagon profile by means of the rotatable travelling gear.
  - Auxiliary rubber wheels for turning as well as rerailing and unrailling at level crossings

#### Wide range of use

- Hydraulic cylinders can be mounted on the inside or outside, enabling work on track gauges 830 mm to 3530 mm
- With the use of a pressure booster various hydraulically operated tools can be utilised. (Saving a hydraulic unit)

#### User-friendly and safe

- High occupational safety due to engine stop and rail tongs protected from turning or tilting
- Roof protects from adverse weather
- LED working lights for good visibility

TECHNICAL SPECIFICATIONS		ROTHREAD D
Drive		air-cooled 4-stroke diesel engine
Type		HATZ 1 D81 „Silent Pac“
Output		7.2 kW at 2,000 rpm
Fuel tank capacity		20 l
Hydraulic system operating pressure		50/160 bar
Hydraulic oil reservoir		35 l
Electrical system battery		12 V, 60 Ah
Lifting capacity		6 t
Vertical travel max.		800 mm
Outward expansion force		30 kN
Inward expansion force		15 kN
Gauge		830 – 3530 mm
Wheel base		800 mm
Wheel diameter double wheel flanges		300 mm
Max. travelling speed		13 km/h
Max. negotiable gradient		25 ‰
Dimensions (L x W x H)		1700 x 4100 x 1800 mm
Weight without auxiliary equipment		~1.5 t

ACCESSORIES	
9891041960	Hood-shaped cover of strong, fabric-reinforced PVC sheet
8437790001	Hydraulic connection for secondary equipment, e.g. for ROBEL 24.12 Rail Pulling and Pushing Device
8431920010	Holders incl. hose set
8002412019	Clamping head and cylinder for pulling rails



## ROTOOL Wooden Sleeper Carrying Tongs 44.17

**For manual lifting of sleepers.**

Heavy duty DB design made of steel.



TECHNICAL SPECIFICATIONS		ROTOOL W-Tong
Width up to		270 mm
Height up to		165 mm
Dimensions (L x W x H)		1000 x 60 x 450 mm
Weight		~7.7 kg



# ROTOOL

## Concrete Sleeper Carrying Tongs

44.20

For manual lifting of sleepers.

Heavy duty DB design in steel.



### TECHNICAL SPECIFICATIONS

### ROTOOL C-Tong

Width up to	280 mm
Height up to	205 mm
Dimensions (L x W x H)	1050 x 100 x 630 mm
Weight	~10 kg

# ROJACK

## Ratchet Track Jack with Safety Crank Handle

46.43/46.45/46.47/46.50

For lifting and lowering loads, e.g. track panels, rails etc.  
Compliant with Accident Prevention Guidelines for Winches, Lifting and Pulling Devices, BGV D8 (EN 45000).

- Solid, rugged design with large reinforced foot plate
- Safety crank with load pressure brake and foldable handle



### TECHNICAL SPEC.

### ROJACK Ratchet 3

### ROJACK Ratchet 5

### ROJACK Ratchet 7,5

### ROJACK Ratchet 10

Designation	46.43	46.45	46.47	46.50
max. lifting capacity	3 t	5 t	7.5 t	10 t
max. lifting height	340 mm	300 mm	300 mm	300 mm
Partial lift per ratchet	0.8 mm	0.4 mm	0.4 mm	0.3 mm
Lift per crank handle turn	8 mm	4 mm	4 mm	4 mm
Excavation height	65 mm	65 mm	65 mm	80 mm
Dimensions (L x W x H)	290 x 220 x 715 mm	290 x 230 x 720 mm	290 x 230 x 720 mm	335 x 260 x 790 mm
Weight	~24.5 kg	~29.5 kg	~34 kg	~46 kg

For continuously adjustable and precise lifting of rails



Using T-bar socket wrench



Using crank wrench

#### TECHNICAL SPECIFICATIONS ROJACK 7,5

Max. lifting capacity	7.5 t
Max. lifting height	150 mm
Excavation height	70 mm
Dimensions (L x W x H) without lever	520 x 200 x 255 mm
Weight	~15.5 kg

#### ACCESSOIRES

8917513301	socket wrench
9804714001	crank wrench
8917513203	Insert

For vertical lifting and setting down a rail lifter

- Consists of base plate, piston with cylinder, pump and oil reservoir
- Robust and particularly compact design
- Easy to use thanks to detachable hand lever
- Quick-action lowering device
- Lifting cylinder equipped with lifting nose as well as structured lifting area at the head



#### TECHNICAL SPECIFICATIONS

#### ROJACK HD 6,5

Max. lifting capacity	6.5 t
Max. lifting height	80 mm
Excavation height	45 mm
Dimensions (L x W x H) without lever	290 x 180 x 175 mm
Weight	~17 kg



For lifting, lining and slewing tracks or entire track panels

### ITS BENEFITS. YOUR BENEFITS.

#### Perfect work quality & efficiency

- High lifting capacity of 20 t and slewing force of 4.25 t
- Rail tongs lift rail horizontally
- Ballast scraper: running surface always clear of ballast
- 12 V socket
- Engine stop button

#### Long service life & high availability

- Hydrostatic drive gear
- 20 l diesel tank capacity
- Flexible push-fit rubber wheels enable turning and unloading at level crossings
- Optimum lifting point for transport due to lifting cross member
- Hydraulic oil filter with contamination indicator and replaceable filter element

#### Health & Safety

- Exhaust gas routing away from the operator
- Special sound-insulated design „Silent Pac“
- Optimised safeguards on hydraulic hoses, grease nipples, valves, adapters etc.
- Protection from weather due to easily adjustable and removable roof
- Heated seats (optional)

#### Applications

- During lifting work on switches
- During track tamping
- For insulated joint maintenance
- For lifting rails to replace rail pads
- For lifting and slewing track panels



### TECHNICAL SPECIFICATIONS

#### ROALIGN D

Engine	air-cooled single-cylinder 4-stroke diesel engine; special sound-insulated design „Silent Pac“
Output	at 2000 rpm 7.2 kW (9.8 hp)
Fuel tank capacity	20 l
Performance	
Lifting capacity	at 150 bar 200 kN (20 t)
Lifting height	continuously adjustable 0 to 900 mm
Slewing force	at 150 bar 42.5 kN (4.25 t)
Slewing range	continuously adjustable 0 to 230 mm
Gauge	1435 mm
Self-propelled speed	continuously adjustable, forward and backward 0 to 13 km/h
Dimensions (L x W x H)	1700 x 3120 x 1950 mm
Weight (without auxiliary equipment)	~1600 kg
Upon request for additional charge	different track gauges, tarpaulin and much more

### ACCESSORIES

9000100064 Hood-shaped cover  
8475520024 Driver's seat with heated seat  
8475200032 Roofing

8478400032 Off-Tracking Equipment  
8478100032 Lifting Beam Short

**For transporting material, equipment and tools by rail.  
A large number of variations for different track gauges  
available with additional equipment.**

- Light-weight, sturdy vehicle with a platform made of perforated aluminium plates with a non-slip surface
- No accumulation of water or dirt
- Ball bearing synthetic running wheels/optionally sheet steel jacketed
- Carrying handles on the sides
- Parking brake acting on two wheels

Various designs upon request.



## TECHNICAL SPECIFICATIONS

Aluminium design

Permitted carrying capacity max.

700 kg

Gauge

1435 mm

Running wheel diameter

90 mm

Dimensions (platform)

800 x 1620 mm

Weight

~29.5 kg

## ROLLY 0,7

## ACCESSORIES

9805112016 Bow-type handle, non-foldable (mounting kit)

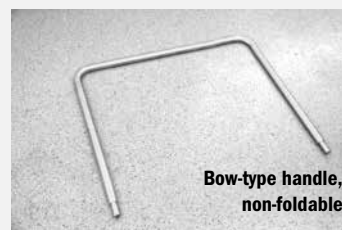
9805112001 Foldable bow-type handle with integrated dead man's brake (mounting kit), can be used for gauges 1435 – 1524 mm

8005112013 Brake rod to sleeper crib

### For screwed design

9869120035 Dead man's brake

9869150035 Bow-type handle





# **ROLLY**    **Transporting Device**

**52.16**

## **Safe transport on four-wheeled trolley**

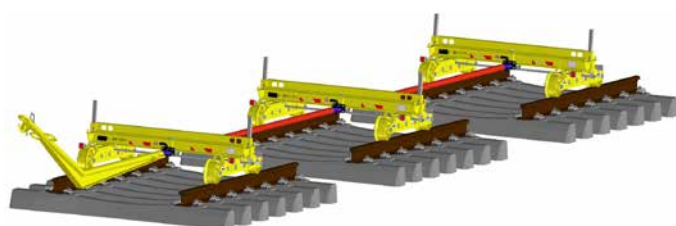
- Transports long-welded rails, track construction equipment, tools and construction parts
- Transport of long and extensive load by combining up to four devices with connecting rods

## **Options**

- Pivot plate with push-fit uprights, swivelling range approx. +/- 8°
- With or without parking brake

## **Version 5**

- Device approval for operating and construction tracks (DIN EN 15945)
- Parking brake acts on all four wheels
- Optional trailer coupling on both sides and connecting rods



Version 5



Version 5



Version 5 trailer coupling

TECHNICAL SPEC.	ROLLY 15 VERSION 2	ROLLY 15 VERSION 3	ROLLY 15 VERSION 5	ROLLY 15 VERSION 6
Standard design	without pivot plate	with pivot plate	with or without pivot plate	with or without pivot plate
Permissible load	15 t	15 t	15 t	15 t
Wheelbase	480 mm	480 mm	1435 mm	1435 mm
Cross beam length	1900 mm	1900 mm	1900 mm	1900 mm
Running wheel diameter	250 mm	250 mm	250 mm	250 mm
Max. permitted speed	20 km/h	20 km/h	20 km/h	20 km/h
Dimensions (L x W x H)	780 x 1900 x 360 mm	780 x 1900 x 493 mm	1734 x 1900 x 498 mm or 1734 x 1900 x 390 mm	1734 x 1900 x 498 mm or 1734 x 1900 x 390 mm
Gauge	1435 mm	1435 mm	1435 mm	1435 mm
Weight	187 kg	252 kg	437 kg or 383 kg	336 kg or 282 kg
Trailer coupling	without	without	incl. 2	without
Other gauges on request.				

## **ACCESSORIES**

### **Connecting rods**

- 8820032000 Connecting distance 5700 mm  
8820032100 Connecting distance 4565 mm

Further lengths available on request.

- 8261800005 push-fit uprights for version 2, 5 and 6 without pivot plate



Version 3 - short wheelbase with pivot plate



### For recovering and transporting rail vehicles with defective wheels or wheel sets.

The running wheels of the rail vehicle are placed on the towing device, the vehicle is locked securely via the wheel flanges of its running wheels.

### ITS BENEFITS. YOUR BENEFITS.

#### Cost and time savings due to modular design

- Quick assembly and recovery
- Low weight
- High carrying capacity due to sturdy diagonally interlocking frame (up to 300 kN)
- Reduces consequential costs (e.g. line closure) to a minimum

#### User-friendly due to modular construction

- Low weight of individual components

### TECHNICAL SPECIFICATIONS

### ROTOW

Gauge	1435 mm
Rail vehicles to be towed with running wheel	diameter 630 - 1250 mm
Pivoting range of rerailing bridge (centre pivot plate)	+/- 5°
Axle base	1300 mm
Running wheel (measuring circle)	dia. 300 mm
Tyre width	135 mm
Wheel flange height	32mm
Towing speed	40 km/h
Height of running wheel above top of rail (rail vehicle)	approx. 17 - 84 mm
Carrying capacity	300 kN (30 t)
Total weight	~630 kg
Modular design, individual component max.	~71 kg
Dimensions additional equipment	
Rerailing bridge (L x W x H)	approx. 2200 x 350 x 140 mm
Support width	~2200 mm

### ACCESSORIES

- 8720180252 Mounting jack, carrying handles with hook-in claws for carrying or placing pre-mounted longitudinal beams onto wheel sets of towing device (2 off required per device)
- 8720180258 Adapter for rerailing bridge, type „DUO – LUKAS“

- 8720180286 Transverse rerailing device
- 8720180384 Slip-on cuff for fixing roller
- 8720180220 Adapter for rerailing bridge LUKAS
- 8720180222 Adapter for rerailing bridge MFD



## ROLLY Track Trolley

52.30

**For transporting track construction equipment, tools and materials**

- Light metal construction
- Can be disassembled into 5 parts (without tools)
- Heaviest individual component 50 kg
- Easy to assemble and disassemble
- Ball bearing aluminium running wheels
- Insulated from rail to rail

**Optionally:**

- Dead man's brake on 2 wheels



### TECHNICAL SPECIFICATIONS

#### ROLLY 2

Permissible load capacity max.	2 t
Gauge	1435 mm
Running wheel	diameter 200 mm
Dimensions (L x W x H)	1600 x 1890 x 890 mm
Weight without dead man's brake	~133 kg
Weight with dead man's brake	~146 kg

## ROCOUPLE Tow Bars

58.03/58.62

### ROCOUPLE 100Straight

58.03/12.01 Straight tow Bar 8820031800

- Length 1500 mm
- Used for Rockinger coupling/Rockinger coupling
- Max. permitted thrust-traction force = 100 kN  
 $\Delta h \pm 100$  mm

### ROCOUPLE 100Slanted

58.03/03 Slanted 800 580 3001

- Length 1450 mm
- Used for Rockinger coupling/Rockinger coupling
- Max. permitted thrust-traction force = 100 kN  
 $\Delta h = 465$  mm max

### ROCOUPLE 30Slanted

58.62/11 Slanted 800 586 2001

- Length 1450 mm
- Used for standard draw hook/Rockinger coupling
- Max. permitted thrust-traction force = 30 kN  
 $\Delta h = 325$  mm max

### ROCOUPLE 30Straight

58.62/12 Straight 800 586 2002

- Length 1250 mm
- Used for standard draw hook/Rockinger coupling
- Max. permitted thrust-traction force = 30 kN  
 $\Delta h \pm 100$  mm



## ROMOVER Wagon Mover

59.08

**For moving wagons of up to 60 t total weight**

- To be used on flat surfaces
- For flat bottom and grooved rails as well as on slab track
- Recommended wheel diameter 600 to 1000 mm
- Dimensions (L x W x H) 25000 x 1900 x 140 mm
- Double crooped version for short stroke, oblique application is possible
- Weight ~12 kg



**For dragging slowly rolling vehicles**

- Standard drag shoe of DB
- Double fish-plated
- Cap and handle replaceable
- Dimensions (L x W x H)  
550 x 90 x 140 mm
- Weight ~8.5 kg

Various designs upon request.


**For rerailing rail vehicles**

- Paired use on standard rails with heavy wagon fleet
- Stable platform with double-sided rail access
- Maximum weight of wagon: 10 t / pair
- Dimensions (L x W x H): 800 x 600 x 270 mm
- Weight: ~174 kg / Pair


**For manual tilting of all common rail types**

- For all rails of a weight up to 65 kg/m
- Dimensions (L x B x H) 1300 x 140 x 35 mm
- Weight ~6 kg


**For lifting lower lying sleepers during track assembly with hook-in part for grooved plates (K-type construction) and for sleeper screws (W-type construction)**

- Dimensions (L x B x H) 1040 x 60 x 190 mm
- Weight ~4 kg





# TAMPING



**ROTAMP**

**Vertical Tamper**



**For undertamping sleepers of all types with ballast and gravel**

- Equips a tamping crew of 4 persons
- A vibration tamping unit consists of 3 assemblies, i.e. 2 vibratory tampers on both the left and right plus 1 generator and 1 distribution box with its connecting cable.
- Vibrating blade made of hard-wearing, high tensile manganese steel
- Supply cable approx. 10 m long with 16 A CEE plug
- Unlike impact tampers, the tamping unit does not damage concrete sleepers
- Power generator fitted in a tubular protective frame
- Option: Version with dead man's switch



## TECHNICAL SPECIFICATIONS

## ROTAMP E Basic

### Vibration tamper

Output	0.4 kW
Dimensions (L x W x H)	1050 x 280 x 600 mm
Weight	~34 kg

### Distribution box

Dimensions (L x W x H)	350 x 300 x 470 mm
Weight	~4 kg

### Drive/power generator recommended output

= 4 kVA

### ROLLY Light Track Trolley 51.12, gauge 1435 (special equipment)

Dimensions (L x W x H)	806 x 1856 x 220 mm
Weight	~26 kg

### Single-axe hand trolley for power generator (special equipment)

Dimensions (L x W x H)	430 x 310 x 240 mm
Weight	~25 kg

## ACCESSORIES

- 9008060025 Distribution box with emergency stop switch
- 9000600369 Single-axe hand trolley for transporting power generator with suspension eyes and rubber handles, with 2 running wheels, 350 mm dia.
- 9008120218 Cable drum/extension lead, approx. 30 m long
- 9008230097 Socket adapter
- 8868230001 Rail movement indicator, indicates the horizontal movement of the rail in relation to the ballast.







**Permanently stable track geometry.  
Tamping in less than 2 mins/sleeper.**

For the safety of railways, a stable track geometry is vital. Deviations from the nominal geometry caused by level errors jeopardise regular railway operation. They result in restricted speed sections or even line closures.

The ROBEL vertical tamping principle ensures an exact interlocking of the ballast. The high tamping performance of ROTAMP leads to more tamping operations time unit and goes easy on the operator. In addition, ROBEL developed the patented 2-level vibration decoupling, which minimizes the hand-arm vibration. The low weight and handy construction makes working comfortable.

**ITS BENEFITS. YOUR BENEFITS.**

**Track stability with ROBEL vertical tamping principle**

- Optimum compaction of ballast under the sleeper
- High bearing load of the track bed due to tightly interlocked ballast
- Continuous railway operation and better utilisation of line capacity
- Long durability of the ballast

**Great tamping performance at high ergonomics**

- Minimum hand-arm vibration thanks to patented 2-level vibration decoupling
- Relief of the operator due to low weight of the machine
- Thermal shielding cover
- Exhaust gas routing away from the operator
- Option: Central safety shutdown

**Accurate work process cut costs**

- Ballast-friendly tamping avoids replacing sleeper and ballast
- Low wear costs due to solid design
- Replaceable tamping tool made of wear-resistant steel



## TECHNICAL SPECIFICATIONS

### ROTAMP P2

62.05 DRIVE AIR-COOLED 2-STROKE ENGINE

Type	Kawasaki TJ45E
Output	1.42 kW at 8000 rpm
Dimensions (L x W x H)	420 x 500 x 1230 mm
Weight	~24.3 kg

### ROTAMP E

62.05 DRIVE ELECTRIC MOTOR

Type	ATB 400 V, 50 Hz
Output	0.75 kW at 2850 rpm
Dimensions (L x W x H)	360 x 460 x 1080 mm
Weight	~24.5 kg

### ROTAMP HD

62.05 DRIVE HYDRAULIC MOTOR

Output	3 kW at 3500 rpm
Dimensions (L x W x H)	420 x 500 x 1230 mm
Weight	~24.9 kg

### ROTAMP P4 Light

62.05L DRIVE AIR-COOLED 4-STROKE PETROL ENGINE

Type	Dolmar
Output	1.5 kW at 7500 rpm
Dimensions (L x W x H)	410 x 510 x 1200 mm
Weight	~19.9 kg

[More information: Battery Technology](#)

### ROTAMP P4 Short Light

62.05L SHORT VERSION

Type	Dolmar
Output	1.5 kW at 7500 rpm
Dimensions (L x W x H)	410 x 510 x 1080 mm
Weight	~19.6 kg

### ROTAMP B

62.20L MODULAR BATTERY POWERED

Power	2 kW
Dimensions (L x W x H)	410 x 510 x 1080 mm
Weight with battery	~24.8 kg (battery ~6.2 kg)



## ACCESSORIES

**62.05 Safety cut-off:** On the work site the audibility of acoustic warning signals cannot be 100% guaranteed. For the vertical tamper a safety cut-off was designed that will alert to dangers when necessary. The operator can concentrate on tamping on the work site and is warned of approaching trains by the central cut-off of the vertical tamper, initiated by the lookout who can stop up to 4 tampers simultaneously. This indicates to the operators that they have to leave the danger zone immediately.

8809910004 Conversion kit, one each required per vertical tamper  
 9008120435 Connection cable, one each per vertical tamper  
 9008120434 Cable drum, can be used for 1 to 4 vertical tampers

### 62.05 and 62.05L

8808960110 Transport box  
 8868230001 Rail movement indicator, indicates the horizontal movement of the rail in relation to the ballast.  
 8809910009 Presentation stand  
 8998950200 Tamping tool puller  
 8999910002 carrying handle  
 9899890100 shoulder strap



Tamping tool puller



Shoulder strap



# ENERGY/ LIGHTING



**ROPOWER**  
**Generator**



### Ensures supply of electrical power, independent from the mains supply.

In various designs, e.g. with trolley or on transport trolley, generator output as per customer requirement.

- Design in accordance with VDE (German Association of electrical Engineers), GS certification mark
- Noise emission complies with EEC Directive 84/536 on Noise Protection
- Sound power level LWA 100 dB (A) pW
- Incl. GW 308 (ISO monitoring with switch-off), Protection type IP 54
- Protection type IP 54 with oil level monitoring
- With oil level monitoring
- Long operating times due to large tank
- CE declaration of conformity
- Operating instructions and spare parts list



TECHNICAL SPECIFICATIONS	ROPOWER P4 270	ROPOWER P4 390
Drive	4-STROKE PETROL ENGINE	4-STROKE PETROL ENGINE
Type	HONDA GX 270, with oil level monitoring	HONDA GX 390, with oil level monitoring
Output	5.4 kW at 3000 rpm	9.6 kW at 3600 rpm
Unit	fitted in a tubular protective frame with 4 lifting handles with GW 308, ISO monitoring with switch-off	fitted in a tubular protective frame with 4 lifting handles with GW 308, ISO monitoring with switch-off
Output	4 kVA/400 V and 3.7 kVA/230 V, 50 Hz	6.1 kVA/400 V and 5.2 kVA/230 V, 50 Hz
Protection type	IP 54 (protection insulated)	IP 54 (protection insulated)
Weight	~89 kg	~100 kg

TECHN. SPEC.	ROPOWER PB&S	ROPOWER D	ROPOWER P4 80
Drive	4-STROKE PETROL ENGINE	DIESEL ENGINE	4-STROKE PETROL ENGINE
Type	Briggs&Stratton, with oil level monitoring	HATZ 1B40, with oil level monitoring	Yamaha MZ80
Output	12.1 kW at 3600 rpm	7.6 kW at 3600 rpm	1.8 kW
Unit	with GW 308, ISO monitoring with switch-off	fitted in a tubular protective frame with 4 lifting handles with GW 308, ISO monitoring with switch-off	fitted in a tubular protective frame with 4 lifting handles with GW 308, ISO monitoring with switch-off
Output	9.0 kVA/400 V and 6.0 kVA/230 V, 50 Hz	6.4 kVA/400 V and 4.5 kVA/230 V, 50 Hz	6 kVA/230 V, 50 Hz
Protection type	IP 54 (protection insulated)	IP 54 (protection insulated)	IP 23
Weight	~134 kg	~132 kg	

### ACCESSORIES

- 9000600369 Single-axle trolley for transporting the generator, with suspension eyes and rubber handles, with 2 running wheels of 350 mm dia.
- 9008060025 Distribution box with emergency stop switch
- 9008120218 Cable drum/extension lead, approx. 30 m long
- 9008230097 Socket adapter from Euro socket CEE16A230V to Schuko socket



Cable drum



Distribution box



**To power:**

- ROGRIND HF Head Hybrid Rail Head Profile Grinding Machine 13.49

**ITS BENEFITS. YOUR BENEFITS.**

- Oil level control with automatic shutdown at low oil
- Quiet and low vibration engine run


**TECHNICAL SPECIFICATIONS**

Drive	Air-cooled 4-stroke petrol engine
Type	HONDA GX200
Output	4.3 kW at 3860 U/min
Total weight	~49.4 kg
Use with generators – Necessary minimum output:	4 kVA at 230 V (if no other machine connected)

**For ROBEL Machinery with BLDC-motor, driven with standard 230 V or 400 V outlets.**

Version 3 for 400 V  
Version 2 for 230 V


**TECHNICAL SPECIFICATIONS**

	Version 2	Version 3
Input voltage	230 VAC* 50/60 Hz	400 VAC* 50/60 Hz
Input power	3200 W	11000 W
Output voltage	56 VDC*	56 VDC*
Output power	3000 W	10000 W
Weight	11 kg	18 kg
Length connection cable	5 m (Safety plug)	5 m (CEE-32A Plug)
*VAC = Volt Alternating current		
*VDC = Volt direct current		

**To power:**

- ROTRIM Hydraulic Weld Trimmer 14.10


**TECHNICAL SPECIFICATIONS**

Drive	Air-cooled 4-stroke petrol engine
Type	HONDA GX200
Output	4.1 kW at 3600 U/min
Abmessungen (L x W x H)	575 x 575 x 460 mm
Weight (without hydraulic hoses)	~37.5 kg
Gewicht Hydraulic hose	~3.8 kg
Hydraulic pressure	max. 550 bar
Hydraulic oil	Renolin MR 310/~3.5 Litre
Engine oil	SAE 15W-40/~0.6 Litre

**ROPOWER P4 DUAL HD High Pressure Power Pack**
**To power:**

- ROSTRESS Hydraulischer Schienenspanner 24.70
- ROTRIM Hydraulisches Schweißwulst-Abschergerät 14.10

**ITS BENEFITS. YOUR BENEFITS.**

- Low space requirement for transport and storage, due to compact construction
- Protection of the components from damage


**TECHNICAL SPECIFICATIONS**

Drive	Air-cooled 4-stroke petrol engine
Type	HONDA GXR 120
Output	4.1 kW at 3600 U/min
Dimensions (L x W x H)	600 x 520 x 420 mm
Total weight	45 kg



**To power:**

- ROSTRESS Hydraulic Rail Stressor 24.70
- ROTRIM Hydraulic Weld Trimmer 14.10

**ITS BENEFITS. YOUR BENEFITS.**

- Low space requirement for transport and storage, due to compact construction
- Protection of the components from damage
- Clean due to emission-free working and reduced noise emissions
- Large area of application (tunnel, urban area, surface mining)
- ROBEL Batteries 71.01 useable (550 Wh, 700 Wh)

**TECHNICAL SPECIFICATIONS**

Drive	Akku
Battery output	700 Wh
Dimensions (L x B x H)	600 x 520 x 420 mm
Weight	45 kg (incl. battery)
Weight battery	6,2 kg

**For extensive lighting of work sites**
**Improved work quality & safety thanks to**

- Good illumination of work area
- Sturdy design and stability
- Quick and easy assembly

**Flexibility**

Compact design, takes little space during transport and working

**6 versions with varying luminosity and outputs.**
**ROLIGHT 2x500, 2x1000**

Consisting of height-adjustable light mast with 1 or 2 halogen floodlights (1000 W) Floodlights

- Telescopic mast with pneumatic hand pump
- Basket provides improved stability
- Floodlights can be swivelled up to 30°


**TECHNICAL SPECIFICATIONS**
**ROLIGHT 2x0,5**
**ROLIGHT 2x1**

Output	2 x 500 W	2 x 1000 W
Light mast height	max. 4.5 m	
Connecting cable	7 m	
Dimensions		
Light mast folded	1200 x 350 x 100 mm	
Basket folded	650 x 650 x 100 mm	
Basket (ready-to-use)	650 x 650 x 400 mm	
Weight	~43.5 kg	

**Optional**

Generator	3.8 kVA
Drive	4-stroke petrol engine
Type	Honda GX240
Protection type	IP 54/55
Number of sockets	2
Voltage/frequency	234 V/50 Hz

**ROLIGHT KLL**

Equipped with special compact fluorescent lamps with very high output at low current consumption. 4 of the 8 lamps can be turned off, providing glare-free light in one direction.

- Illuminated area of up to 700 m<sup>2</sup>
- Can withstand wind speeds of up to 120 km/h due to special stand
- Saves space and is ready for use in no time
- Supplied in impact-resistant flight case


**TECHNICAL SPECIFICATIONS**
**ROLIGHT KLL**

Version with 230VAC	
Diameter	200 mm
Length	900 mm
Lamp weight	~8.2 kg
Protection type	IP44
Protection class	I
Optimum height in use	3500 mm
Assembly time	~1 min
Stand weight	~21.5 kg
Illuminated area	700 m <sup>2</sup>
Number of lamps	8x80 W
Output	365-710 W*
Supply voltage	230 VAC
Generator power required (230VAC)	1.0 kW

\*depending on operating mode



## ROLIGHT LED

Suitable for all areas requiring extensive lighting. Available versions with one, two or four lamps. High light output at low power consumption.

- Maintenance-free
- Wide service temperature range: -40°C to +55°C
- No UV/IR radiation
- Extendable from 1000 to 3500 mm
- Folds down to 1000 x 190 x 190 mm

### TECHNICAL SPECIFICATIONS ROLIGHT LED

LED lamp	
LED output	40 W
Voltage	230 VAC
LED lifespan	> 50,000 h
Housing + reflector material	Aluminium
Protection type/class	IP65/I
Lamp weight	~3.3 kg
Dimensions of a lamp (L x W x H)	262 x 185 x 230 mm

## ROLIGHT B LED

For basic illumination of a construction site, maintenance-free without UV / IR radiation.

### ITS BENEFITS. YOUR BENEFITS.

- Flexible use
- Wireless light for every work area
- Extendable from 1000 to 3500 mm
- Foldable to 1000 x 190 x 190 mm
- Wider temperature application range from -40 °C to + 55 °C

### TECHNICAL SPECIFICATIONS ROLIGHT B LED

Lighting duration	10 h at 100% luminosity 20 h at reduced luminosity
Charging time	6 h/100% charged
LED output	30 W
Charging voltage	230 VAC
Battery LI-ION	10 Ah 36 VDC
Luminous flux	100 lm/W
Cover	5 mm safety glass
Protection type/class of lamp and battery	IP65/III
Protection type/class of charger	IP44/I
Weight including flight case	~22 kg
Dimensions of flight case (L x W x H)	1250 x 430 x 220 mm

## ACCESSOIRES

9002100237 ROPower D power generator



# SECURING MEASURING



**ROCLAMP**

**Rail Clamp**



**For true-to-form and secure connection of two rail ends at insulated joints, fractured rails and determined rail defects, from prevention to repair. Various possibilities of use due to different types of rail clamps for different rail types.**

The clamp is fitted directly onto the rail joint using 2 flat fish-plates. It can also be deployed for thermite welding with the use of cropped fish-plates (supplied by customer). Even with little space between rail foot and ballast bed.

### ITS BENEFITS. YOUR BENEFITS.

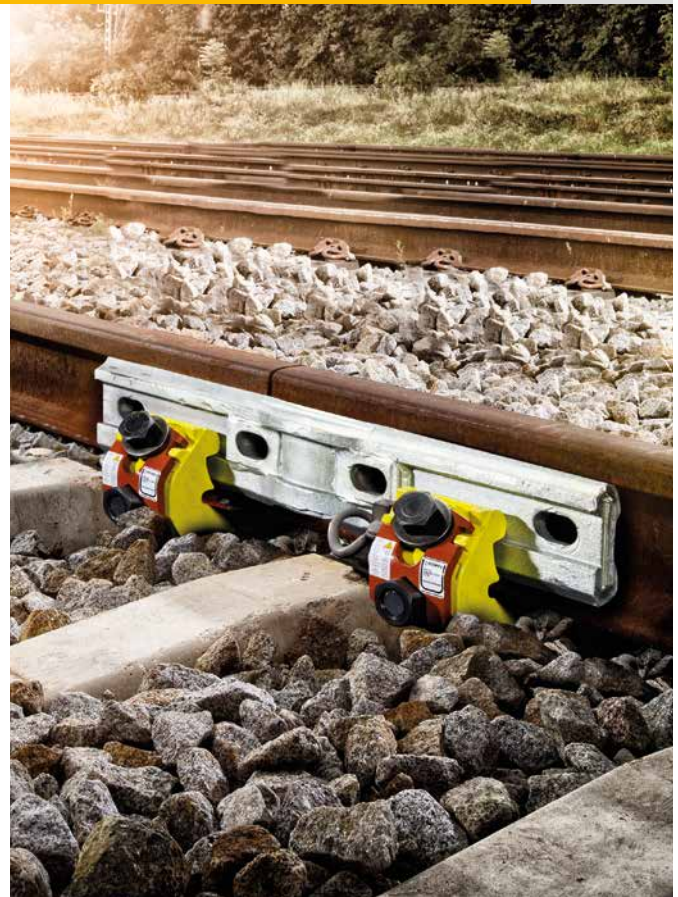
#### Flexibility & cost efficiency thanks to

- Compact designs
- Minimum ballast excavation required, also suitable for the majority of slab tracks
- Long service life with reduced checking frequency and maintenance effort
- High passing speed depending on rail defect

#### Safe and user-friendly due to

- Securing fish-plate with triple safety effect
- Colour coding
- Precise adjustment to rail profile and fish-plate
- Connector and securing fish-plate are secured with the same wrench size and torque
- DB user acceptance (approval)

Please ask your ROBEL contact about your specific rail-fishplate combination (with suitable fishplate).



#### Version 4 Standard long

#### ROCLAMP Long Vers4

Dimensions (L x W x H)	190 x 280 x 130 mm
Tightening torque	580 Nm
DB user acceptance (approval)	up to 160 km/h and up to 200 km/h
for construction and operating tracks	(with internal transverse defect)
For rail types	UIC60, S49, S54, UIC54, U50, BS100A, (with suitable fishplate)
Weight	~21.5 kg



#### Version 5 Standard short

#### ROCLAMP Short Vers5

Dimensions (L x W x H)	105 x 280 x 130 mm
Tightening torque	580 Nm
DB user acceptance (approval)	up to 160 km/h and up to 200 km/h
for construction and operating tracks	(with internal transverse defect)
For rail types	UIC60, S49, S54, UIC54, U50, BS100A, (with suitable fishplate)
Weight	~12.5 kg



#### Version 4 long

#### ROCLAMP Long AUS

Dimensions (L x W x H)	190 x 280 x 130 mm
Tightening torque	580 Nm
Approval	up to 160 km/h
For rail types	AS41kg, AS47 kg, (with suitable fishplate)
Weight	~21.5 kg



#### Version 6

#### ROCLAMP Long Vers6

Dimensions (L x W x H)	190 x 280 x 130 mm
Tightening torque	580 Nm
Approval	up to 160 km/h
For rail types	OT50, 91lb NZR, AS50kg, (with suitable fishplate)
Weight	~21.5 kg



<b>Version 7 AUS</b>	<b>ROCLAMP Long Vers7 AUS</b>
Dimensions (L x W x H)	190 x 280 x 130 mm
Tightening torque	580 Nm
Approval	up to 160 km/h
For rail types	AS53kg, AS60kg, AS60kg, (with suitable fishplate)
Weight	~21.5 kg



<b>Version 9 short</b>	<b>ROCLAMP Short Vers9</b>
Dimensions (L x W x H)	105 x 280 x 130 mm
Tightening torque	300 Nm
Network Rail approval	up to 160 km/h
For rail types	BS113A, UIC60, (with suitable fishplate)
Weight	~12.5 kg



<b>Version 10</b>	<b>ROCLAMP Long Vers10</b>
Dimensions (L x W x H)	190 x 280 x 130 mm
Tightening torque	300 Nm
Network Rail approval	up to 160 km/h
For rail types	BS113A, UIC 60, (with suitable fishplate)
Weight	~21.5 kg



<b>Version 11 short</b>	<b>ROCLAMP Short Vers11</b>
Dimensions (L x W x H)	105 x 280 x 130 mm
Tightening torque	300 Nm
Approval	up to 160 km/h
For rail types	63T, 50T, UIC60, (with suitable fishplate)
Weight	~12.5 kg



<b>Version 13</b>	<b>ROCLAMP Short Vers13</b>
Dimensions (L x W x H)	105 x 280 x 130 mm
Tightening torque	580 Nm
Approval	up to 160 km/h
For rail types	UIC60, DSB45, (with suitable fishplate)
Weight	~12.5 kg



<b>Version 20</b>	<b>ROCLAMP Short Vers20</b>
Dimensions (L x W x H)	101 x 267 x 129 mm
Tightening torque	530 Nm
Approval	—
For rail types	49E1 (S49) und BS80A (39E1)
Weight	~ 11 kg



## ACCESSORIES

9002501790 Torque wrench  
With adjusting scale  
Automatic release  
Torque range 130 – 650 Nm  
3/4 inch square drive  
Weight ~2.9 kg  
Reversible push-in ratchet



Torque wrench

9002501120 Socket A/F41, hexagon socket wrench insert  
3/4 inch square drive



Socket A/F 41





### Mobile fencing system for securing work sites

Protection of workforce from dangers arising from trains passing on operating adjacent tracks. Numerous applications both for permanent use as well as for temporary daily use.

### TECHNICAL SPECIFICATIONS

### ROFENCE

Weight per fence post element

~7 kg

### ITS BENEFITS. YOUR BENEFITS.

#### User-friendly

- Easy and quick assembly
  - Low weight in spite of robust tubular structure
  - Length-adjustable, galvanised and insulated fence post elements in solid or collapsible design
  - Easy adjustability 2 - 2.5 m
  - Insulated reception tube for aluminium safety fence
- Image caption: Length adjustment

#### Improved safety

- Real and visual barrier
- Concentration on main activity in closed-off area
- Demarcation
  - to adjacent track
  - from danger zones on track
  - for paths and roads
  - from on-track machines
  - during work at nighttime
  - from various assemblies and work sites
- Compliant with the Accident Prevention and Safety Measures in the Danger Zones of Railway Tracks (GUV 15.2)
- GS approved

#### Potential savings

- No need for acoustic disruptive crew warning signals
- Setup lengths can be extended flexibly
- For trains passing on adjacent tracks at a maximum speed up to 160 km/h
- High quality and flexibility in daily use

#### Distances from centre of track

The carrier element can be extended to the required notch and fixed.

Number of notches	speed range up to	distance from track centre
6	160 km/h	2500 mm
5	140 km/h	2400 mm
4	120 km/h	2300 mm
3	90 km/h	2200 mm
2	70 km/h	2100 mm
1	50 km/h	2000 mm

### ACCESSORIES

- 9800693077 Plastic grating, red, 0.5 m high, 50 m each  
 8649910001 Barrier tape holder  
 9000203470 Barrier tape  
 9800693050 Aluminium safety fence  
 9806930001 Fence post element for aluminium safety fence





# MEASURING DEVICES

We calibrate your measuring devices! Contact your ROBEL partner.

## ROMEAS Versine

## Versine Measuring Device

82.05

### For measuring track curves

- Not obstructionless
- Two angle supports in aluminium with level
- 45 m chord
- Ruler
- Complete in canvas bag
- Weight ~2.6 kg



## ROMEAS Versine

## Versine Measuring Device

82.06

### For easy checking and determination of versines in track curves

- Can be used for all common rail profiles
- Measuring chord adjustable to rail height and from side to side
- Easy attachment to rail foot
- Obstructionless
- Consisting of 2 tensions clamps with rope drum and 70 m nylon rope
- Weight ~4.3 kg



## ROMEAS Level

## Sighting and Levelling Unit

82.07

### For determining the longitudinal level (with reference to the top of rail) and cross level tasks

- Scales every 10mm, alternating in 1- and 2-mm graduation
- Minus zone of level slide marked with a red bar
- Telescope magnification 24-fold
- Lens opening 36 mm
- Portrait image
- Shortest adjusting distance ~0.4 m
- Adjusting distance ~1.2 mm to 30 m
- Rotation range with micro adjustment 360°
- System height above top of rail 1300 mm
- Tilting device used as sighting facility
- Tilting range  $\pm 40\%$
- Levelling rod used for levelling at fixed points
- Scale graduation 1 mm
- Measuring range of basic scale  $\pm 800$  mm
- Measuring range of adjustable level slide  
+ 150 mm  
- 100 mm
- Total weight ~13 kg





ACCESSORIES

- 9800820010

Target rod lighting  
consisting of: 1 cold cathode neon lamp, 12 V,  
for side lighting of adjustable level slide,  
including one rechargeable battery.  
Battery, charger, shoulder bag
- 9800820001

Push-on part 0 - 150 (Standard = 0 - 50)
- 9800820008

Transport and storage box of water-resistant,  
glued plywood with carrying handles

ROMEAS

Track Square

82.11



For aligning sleepers

- Double leg
- In robust aluminium design
  - With inner and outer stops
  - Insulated from rail to rail
  - Weight ~3.5 kg

TECHNICAL SPECIFICATIONS	ROMEAS Square	
	FIXED DESIGN	COLLAPSIBLE DESIGN
Dimensions (L x W)	1700 x 1400 mm	1700 x 700 mm
Weight	~3.6 kg	~3.2 kg

**For measuring**

- Track gauge
- Check rail gauge
- Guard rail gauge
- Flange groove
- Superelevation

**Measuring range:**

- Track gauge 1435 mm -10 mm to +40 mm
- Check rail gauge 1394 mm -10 mm to +10 mm
- Back to back distance (2<sup>nd</sup> check rail gauge): 1332 mm to 1365 mm
- Flange groove 31 mm to 60 mm
- Measuring accuracy +/- 0.5 mm
- Weight ~2.5 kg


**ACCESSORIES**

- 9891080091 Conversion kit for grooved rails  
 9002200216 Bag for gauge 1435  
 R\_KAL\_INT Calibration



Conversion kit for grooved rails

**For measuring**

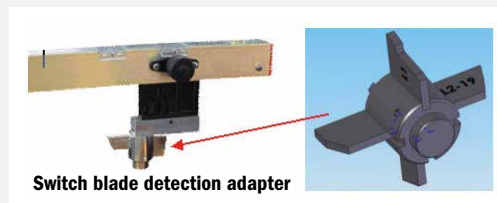
- Track gauge
- Check rail gauge
- Guard rail gauge
- Flange groove
- Superelevation
- Light-weight, handy size
- Aluminium rectangular tube
- Gold anodised, insulated
- Superelevation measuring integrated

**Measuring range:**

- Track gauge 1435 mm; 1415 mm to 1475 mm
- Check rail gauge 1385 mm to 1405 mm
- Back to back distance 1344 mm to 1361 mm
- Flange groove 30 mm to 83 mm
- Superelevation -30 mm to +200 mm
- Measuring accuracy +/-0.5 mm
- Scale graduation 1 graduation mark = 1 mm
- Weight ~2.5 kg


**ACCESSORIES**

- 9808320003 Switch blade detection adapter, DB with check gauges L1, L2, L2-19, L2-21  
 9002200169 Switch blade detection adapter with check gauges L1, L2  
 9808307014 Transport box for gauge 1435  
 9002200216 Transport bag  
 R\_KAL\_INT Calibration  
 9808307013 Measuring bolt set for grooved rails


 Measuring bolt  
 dia. 20 mm


Switch blade detection adapter



Measuring bolt set for grooved rails



**ROMEAS Point****Fixed Point Measuring Device****83.15**

**For measuring distances between fixed points and signal post, between concrete walls etc. and the track and for checking individual level values using an appropriate measuring gauge**

- Attached to the rail by magnets
- Exact position adjustable via a level
- Weight ~1.2 kg

**ROMEAS Gap****Joint Gap Measuring Device****83.18**

**For measuring the distance between two adjoining rails**

- Aluminium
- With measuring scale
- Measuring range 1 mm to 15 mm
- Weight ~0.1 kg

**ROMEAS Wear****Stock Rail and Switch Blade Gauge****83.20**

**For easy checking of wear spots in the switch blade area as per DB regulation**

- Insulated from rail to rail
- With test gauge dia. 4 mm
- Weight ~1.4 kg

**ROMEAS TGauge +****Track Gauge and Superelevation Measuring Device****83.37**

**For measuring:**

- Track gauge
- Superelevation

- Light-weight, handy measuring device
  - Track gauge -10 mm to +40 mm
  - Superelevation -30 mm to +200 mm
  - Reading accuracy 1 graduation mark = 1 mm
- Other gauges available upon request.

**Measuring range:**

- Track gauge 1435 mm -10 mm to +40 mm
- Superelevation -35 mm to +195 mm
- Equipped with measuring bolt for flat bottom rails (14 mm)
- Weight ~2.7 kg

**ACCESSORIES**

- 9891832120 Stop bolt for 9 mm grooved rails, 3 nos. are required  
 9808307014 Transport box for gauge 1435  
 R\_KAL\_INT Calibration  
 9002200216 Transport bag



**Stop bolt for grooved rails**



**For measuring**

- **Track gauge**
- **Superelevation**

- Light-weight, handy size
  - Aluminium rectangular tube
  - Gold anodised, insulated
  - Superelevation measuring integrated
  - Weight ~2.5 kg
- Other gauges available upon request.

**Measuring range:**

- Track gauge 1415 mm to 1500 mm
- Superelevation -30 mm to +200 mm
- Measuring accuracy +/-0.5 mm
- Scale graduation 1 graduation mark = 1 mm


**ACCESSORIES**

- 9808337007 Measuring bolt set for grooved rails  
 9808307014 Transport box for gauge 1435  
 9002200216 Transport bag  
 R\_KAL\_INT Calibration

**For measuring**

- **Track gauge**
- **Check rail gauge**
- **Flange groove**
- **Back to back distance**
- **Cross level on flat bottom and grooved rails**

- Combined track construction measuring device for new track and maintenance
  - All values are clearly shown on a display and therefore can be viewed easily at one glance
  - Made of gold anodised sturdy aluminium tube, with integrated electronics and measuring mechanics
  - With turning knob for gauge adjustment
  - Weight ~2.5 kg
- Other gauges available upon request.

**Measuring range:**

- Track gauge -20 mm/+40 mm
- Superelevation +/- 200 mm
- Flange groove 20 - 128 mm
- Check rail gauge 1347 - 1455 mm
- Back to back distance 1327 - 1435 mm



**Option: Version with Bluetooth function and related data readout software**

**ACCESSORIES**

- 9808350008 Transport case  
 R\_KAL\_INT Calibration  
 9002200216 Transport bag



Transport case



**For measuring the distance between centre of track and platform (ramp) and for measuring the height from top of rail to platform edge**

- Gauge 1435 mm
- Made of rectangular aluminium tube, insulated
- With superelevation and track gauge measuring device
- Weight ~5.5 kg

**Measuring range:**

- Horizontally from centre of the track 0 mm to 2050 mm
- Vertically from top of rail 0 mm to 1200 mm
- Track gauge - 10 mm to + 40 mm, 1435 mm  
Other gauges available upon request.
- Superelevation - 30 mm to + 200 mm



### ACCESSORIES

- 9808387007 Transport box for device with superelevation  
9808387004 Transport box for device without superelevation  
9002200216 Transport bag

**For measuring vertical and lateral rail wear (at 22.5, 45 and 67.5 degrees to the rail centre line).**

- For rail types S41, S49, S54 and UIC60
- Version depending on rail type
- With handy plastic case

TECHN. SPEC.	Head 1 (SKM1)	Head 2 (SKM2)
Measuring range	0°, 45°	0°, 22,5°, 45°, 67,5°
Weight	~1.2 kg	~1.5 kg



**For checking measurements L + L1 during build-up welding work in switches and crossings**

- Galvanised surface
- For rails S 49/54 UIC 60
- Special equipment: Other rail profiles
- Weight ~0.6 kg



**For measuring the length of rail sections**

- Version for S49, S54, UIC 60
- Measuring range up to 10,000 m, measuring tolerance 0.02%
- Special equipment carrying case
- Weight ~5.5 kg


**ACCESSORIES**

- 9891850005 Carrying case  
Robust design with carrying handle  
Of rugged, water-proof material

**For checking the track geometry with reference to a fixed point at the catenary support or adjacent track.**

Distance and level measurements to the fixed point can be established accurately in a single operation.

- Model includes transport case
- Measuring range Measurable distance up to 4262 mm
- Measurable height up to 700 mm
- Weight ~6.5 kg


**For measuring the rail temperature**

- Round model with magnet
- Nominal Size 40 mm
- Outer diameter approx. 60 mm
- White dial plate with easy-to-read scale
- Measuring range -30 – 70° C/-20 – 150° F
- Weight ~0.07 kg


**ACCESSORIES**

- 9000400322 Screw cap box (Ø 46 x 23 mm)



# EQUIPMENT TOOLS



**ROTOOL Eject**

**Clip Bolt Ejecting Device**



**ROTOOL Punch****Drift Punch****69.01**

Versions:

- Long version 290 mm
- Short version 210 mm
- 15 mm
- 16 mm

Hickory handle:

- Long version ~1.8 kg
- Short version ~1,4 kg

**ROTOOL Crow****Crow Bar****69.02**

- 125 mm with spike pulling notch and point, ~6,2 kg
- 150 mm with cutting edge and point, ~8 kg
- Great version ø 125 mm
- Short version ø 150 mm

**ROTOOL Hammer****Hammer****69.03**

- For positioning rails into grooved plates and for driving plastic dowels into concrete sleepers
- With wear-resistant, replaceable plastic inserts
- Hickory handle ~5.2 kg

**ROTOOL Ram****Track Ram****69.04**

- To be used by 4 persons
- Wear-resistant, replaceable plastic inserts
- Weight ~103 kg

**ROTOOL Pick****Tamping Pick****69.05**

- With or without handle

**ROTOOL Sleeper****Sleeper Hammer****69.06**

- Forged with oval eye
- Depending on size ~5.5 kg, ~6.5 kg, ~9 kg





**ROTOOL Fork****Ballast Fork****69.07**

- 9 arms
- Weight with handle ~2.7 kg, without handle ~1.8kg

**ROTOOL Lever****Points Lever****69.08**

- For installing and removing plastic clips
- Weight ~6 kg

**ROTOOL Shovel****Shovel made of Steel Sheet****69.09**

- Available with or without handle
- Weight with handle ~1.9 kg, without handle ~1.1

**ROTOOL Broom****Switch Broom****69.10**

- With or without handle
- Locking handle holder for multiple use
- Optionally with ice scraper
- Weight ~1.1 kg

**ROTOOL Adze****Adze****69.11**

- With or without handle

**ROTOOL Chisel****Cold Chisel****69.12**

- C45 steel, tempered
- Cutting edge with grind
- ~1.7 kg



**ROHORN Single****Single-Tone Signal Horn****69.13**

- „Blowing horn“
- 1 bell mouth

**ROSIGN SH-2****Stop Disc****69.14**

- 9002002107 Stop disc for protection, 440 mm x 550 mm
- 9002007862 Stop disc for protection, reflecting, 440 mm x 550 mm
- 9002002293 Mount for Stop disc, is fixed on the rail
- 9000800249 Mount for Stop disc, is fixed on the rail (with option for flashing warning light)

**ROHORN Multi****Multi-Tone Signal Horn****69.15**

- 2-tone signal
- With 4 bell mouths
- With replaceable mouth piece
- Weight ~0.8 kg

**ROTOOL Eject****Clip Bolt Ejecting Device****69.16**

- For removing rusted clip bolts from grooved base plates
- Weight ~4 kg

**ROTOOL Extract****Extraction Socket****69.18**

**For restructuring demolished sleeper screws.**

Easy to turn off with T-key, Impact wrench or wrenching machine.

- SW 39
- Profile inside diameter 17,5 mm

**Torque Wrench**

- 9002501218 Suitability 50 - 320 Nm
- 9002501790 Suitability 130 - 650 Nm
- 9002501248 Suitability 400 - 1000 Nm



# SERVICE





# What does good Service stand for?

Reliable stand-by duty of rail construction machines is a vital part of economic operation. Failure free performance and longtime availability reduce dwell time and cost. Preventative maintenance secures high functionality and minimizes subsequent damage.

Good service guarantees both a long life span and value preservation and is therefore the base for effective use of hand guided machines and equipment.

By buying a ROBEL product, you do not only get a high quality machine, but also a reliable service partner.

**ROBEL offers expert advice and a wide variety of service activities, helping you to successfully do your job:**

- **Maintenance and repair using certificated original parts**
- **Modification and adjustment**
- **Damage assessment**
- **Calibration of measuring tools**
- **Original spare and wearing parts**
- **Machine demonstrations**
- **Phone consulting service**
- **Training of operators and workshop personnel**

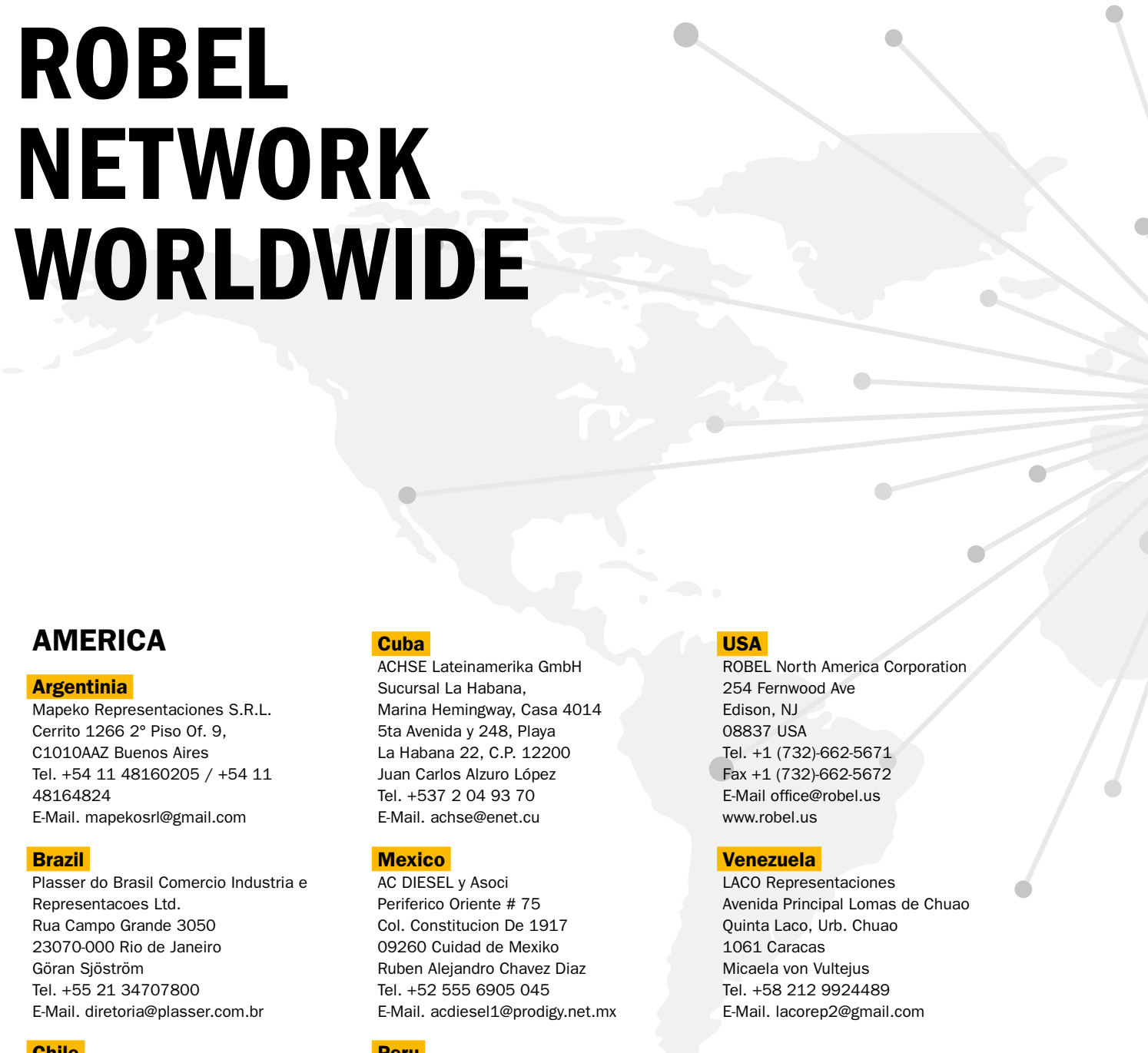
ROBEL Service stands for schedule adherence, for a good price performance ratio and for flexible, non-bureaucratic support during the whole life-span of a product.

Take advantage of our service portfolio and use the full potential of your machine!





# ROBEL NETWORK WORLDWIDE



## AMERICA

### Argentina

Maepko Representaciones S.R.L.  
Cerrito 1266 2° Piso Of. 9,  
C1010AAZ Buenos Aires  
Tel. +54 11 48160205 / +54 11  
48164824  
E-Mail. maepkosrl@gmail.com

### Brazil

Plasser do Brasil Comercio Industria e  
Representacoes Ltd.  
Rua Campo Grande 3050  
23070-000 Rio de Janeiro  
Göran Sjöström  
Tel. +55 21 34707800  
E-Mail. diretoria@plasser.com.br

### Chile

IBD Asesorias y Desarrollo de Negocios  
Internacionales LTDA  
Seminario 138 Providencia  
7500000 Santiago de Chile  
Rodolfo Goyeneche  
Tel. +56 2 2222 96 33  
E-Mail. guido.goyeneche@mercanta.cl

### Colombia

Pinz & Prieto Representaciones Ltda.  
Carrera 7 # 74B-56 oficina 409  
110221 Santa Fe de Bogotá  
Harry Pinz  
E-Mail. hjpinz@pinzprieto.com

### Cuba

ACHSE Lateinamerika GmbH  
Sucursal La Habana,  
Marina Hemingway, Casa 4014  
5ta Avenida y 248, Playa  
La Habana 22, C.P. 12200  
Juan Carlos Alzuro López  
Tel. +537 2 04 93 70  
E-Mail. achse@enet.cu

### Mexico

AC DIESEL y Asoci  
Periferico Oriente # 75  
Col. Constitucion De 1917  
09260 Ciudad de Mexico  
Ruben Alejandro Chavez Diaz  
Tel. +52 555 6905 045  
E-Mail. acdiesel1@prodigy.net.mx

### Peru

Global Support Systems SA  
Urb. Huertos de Villena, Pachacamac  
Calle Los Laureles #342,  
San Borja Lima 19  
Sr. Gonzalo Arrieta  
Tel. +51 13673550  
E-Mail. ventas@gss-peru.com

### Uruguay

Potencia S.R.L.  
Ambrosio Velazco 1589  
11400 Montevideo  
Sr. Rafael Crespo Martí  
Tel. +598 2 614 24 07  
E-Mail. potencia@me.com

### USA

ROBEL North America Corporation  
254 Fernwood Ave  
Edison, NJ  
08837 USA  
Tel. +1 (732)-662-5671  
Fax +1 (732)-662-5672  
E-Mail office@robel.us  
www.robel.us

### Venezuela

LACO Representaciones  
Avenida Principal Lomas de Chuao  
Quinta Laco, Urb. Chuao  
1061 Caracas  
Micaela von Vultejus  
Tel. +58 212 9924489  
E-Mail. lacorep2@gmail.com

## EUROPE

### Belgium

Rail & Road Service SPRL  
Avenue des Cottages 19  
4900 Spa  
Olivier Saucez  
Tel. +32 474 770 527  
E-Mail. saucez@rail-road-service.com

### Bulgaria

M T V – Mihail Ilev  
Opaltschenska Str. 92, Bl.44, G.Ap. 40  
BG-1233 Sofia  
Mihail Ilev  
Tel. +35 929 311 153  
E-Mail. mihail.ilev@gmx.net



#### **Denmark**

Dantor  
Københavnsvej 81,  
4000 Roskilde  
Torben Holst  
Tel. +45 40 26 65 32  
E-Mail. th@dantor.dk

#### **Germany**

##### **Germany North**

ROBEL Area Representative North /  
Sales Manager  
Industriestraße 31  
83395 Freilassing  
Ulf Konecny  
Tel. +49 151 18862823  
E-Mail. ulf.konecny@robels.com

##### **Germany East**

ROBEL Area Representative East /  
Technical Sales Manager  
Industriestraße 31  
83395 Freilassing  
Gerd Vogt  
Tel. +49 151 18856189  
E-Mail. gerd.vogt@robels.com

##### **Germany South**

ROBEL Area Representative South /  
Technical Sales Manager  
Industriestraße 31  
83395 Freilassing  
Josef Rogl  
Tel. +49 151 18862828  
E-Mail. josef.rogl@robels.com

##### **Germany West**

ROBEL Area Representative West /  
Technical Sales Manager  
Industriestraße 31  
83395 Freilassing  
Phillip Kannewurf

Tel. +49 151 17112254  
E-Mail. phillip.kannewurf@robels.com

#### **Estonia**

ASI Ivent OÜ  
Lahe 6-12,  
90503 Haapsalu  
Kristjan Kaunissaare  
Tel. +372 52 388 66  
E-Mail. info@asi-invent.ee

#### **Finland**

Ratanaula Oy  
Lehmustie 3 B 8  
11910 RIIHIMÄKI  
Mika Mankinen  
Tel. +358 40 566 2630  
E-Mail. mika@ratanaula.fi

#### **France**

ROBEL France SAS  
52, rue de la Gare,  
68520 Burnhaupt le Haut  
Cathy Bischoff  
Tel. +33 3 89 82 59 92  
E-Mail. contact@robels.fr

#### **Greece**

DATARAIL N. Steinhauer & Co.  
Akarnanias Str. 10  
115 26 Athen  
Nikolaus Steinhauer  
Tel. +30 210 7290708  
E-Mail. info@datarail.gr

#### **Great Britain**

Plasser UK Ltd.  
Manor Road, West Ealing  
W13 OPP London  
Customer Support  
Tel. +44 208 991 3085  
E-Mail. customer.support@plasser.co.uk

#### **Italy**

Plasser Italiana S.R.L.  
Via del Fontanaccio 1  
00049 Velletri (RM)  
Tel. +39 696 10111  
E-Mail. info@plasser.it

#### **Kosovo**

N.T.Sh. AGS  
Dardania bl. 1, hy 3, nr. 5  
10000 Prishtina  
Dr. Gazmend Boshnjaku  
Tel. +381 38 223 950  
E-Mail. agskosova@gmail.com

#### **Croatia**

ITER d.o.o.  
Kneza Ljudevita Posavskog 23  
10000 Zagreb  
Željka Lončarević  
Tel. +385 1 4646 454  
E-Mail. iter@globalnet.hr

#### **Latvia**

Transfer-Marketinga Centrs  
Cerini, Liepu aleja, Babite  
Babite distr., 2101 Babite  
E-Mail. tmcriga@bk.ru

#### **Lithuania**

UAB Gitana  
Bičiulių g. 32, Bludrikų k.  
96320 Klaipėdos r.  
Žilvinas Imbrasas  
Tel. +370 687 26777  
E-Mail. zilvinas.imbrasas@gitana.lt





### Luxembourg

Rail & Road Service SPRL  
Gruus Strooss 22,  
9991 Weiswampach  
Olivier Saucez  
Tel. +32 474 770 527  
E-Mail. saucez@rail-road-service.com

### Netherlands

Nedstrail bv  
Stationsstraat 42  
6662 BC Elst  
Hans Otterman  
Tel. +31 481 35 00 55  
E-Mail. hans@nedstrail.nl

### Norway

Plasser Scandinavia AS  
Kristoffer Robins vei 13  
0978 Oslo  
Tel. +47 22101550  
E-Mail. post@plasser-scandinavia.com

### Austria

ROBEL Verkaufstechniker  
Industriestraße 31  
83395 Freilassing  
Tel. +43 664 465 8018  
E-Mail. julia.czermak@robel.com

### Poland

Deutsche Plasser Bahnbaumaschinen GmbH  
ROBEL-Vertretung Polen  
ul. Grabiszyńska 251a  
53-234 Wrocław  
Jakub Dzierzanowski  
Tel. +48 667 876178  
E-Mail. dzierzanowski@plasser.pl

### Portugal

Kurt Hommé & Companhia Lda.  
Avenida Sacadura Cabral no 49 - R /C,  
100-273 Lisboa  
José Leite  
Tel. +351 217-977142  
E-Mail. geral@kurthomme.com

### Rumania

EXCO TRANSPORT SYSTEMS SRL  
Bd. Dinicu Golescu 38  
010873 Bukarest  
Liviu Bart  
Tel. +40-21-3102960  
E-Mail. excosys@excosys.ro

### Sweden

DAHLRAIL | Buffers Rail Industry AB  
Fabriksvägen 9  
186 32 Vallentuna  
Mikael Gustafsson  
Tel. +46 8 514 30886  
E-Mail. mikael.gustafsson@dahlrail.com

### Switzerland

Sersa Technik AG  
Nordstrasse 1  
5612 Villmergen  
Jürg Hürner  
Tel. +41 56 618 7200  
E-Mail. juerg.huerner@rsrg.com

### Serbia/Bosnia Herzegovina/ Montenegro

Lukintehnik d.o.o.  
Indire Gandi 7  
11010 Belgrade  
Vladimir Luki  
Tel. +381 69 620 018  
E-Mail. office@ltehnik.com

### Slovakia

BIJOL d.o.o.  
Livarska cesta 17a  
2367 Vuzenica  
Andrej Tisnikar  
Tel. +386 2 87 90 156  
E-Mail. andrej@bijol.si

### Spain

Plasser & Theurer Ibérica S.A.U.  
Avenida de Las Lunas nº9  
45529 Yunclerde la sagra, Toledo  
Tel. +34 916 303 152  
E-Mail. ventas@plasser.es

### Czech Republic/Slovakia

VHC Trade spol.s r.o.  
Zelený pruh 99  
140 00 Praha 4  
Jan Husák  
Tel. +420 725 353 378  
E-Mail. lh@vhctrade.cz

### Hungary

S-HANSA Kereskedelmi és  
Szolgáltató Betéti Társaság  
Ősagárd u. 72,  
1172 Budapest  
Pál Keller  
Tel. +36 30 23 11 280  
E-Mail. postmaster@shansa.axelero.net

## AFRICA

### Egypt

EL KARNAK Agency Co.  
Extension of Guesr El Suez St.  
Block No. 82, Industrial Zone  
11769 Cairo  
Sherif Azer Farag  
Tel. +202 2699 3921  
E-Mail. kako@egts.com



### Algeria

Rabah DJADI  
Wilaya de Boumerdes  
Rue Bouziane Hocine  
35010 Commune de Khemis el Khechna  
Rabah Djadi  
Tel. +21 324873453  
E-Mail. djadirabah80@gmail.com

### Mozambique

KURT HOMMÉ CIA. LDA.  
Rua das Rosas N° 306  
Maputo  
José Leite  
Tel. +258 825597638  
E-Mail. geral@kurthomme.com

### South Africa

RAILWAY Infrastructure Projects (Pty) Ltd.  
No 2 Besssemer Street  
Heidelberg, Gauteng 1440  
Thabo Mdluli  
Tel. +27 11 052 2312  
E-Mail. tpm@railwayproject.co.za

## ASIA

### China

ROBEL Railway Engineering Technology  
(Shanghai) Co., Ltd.  
Unit 305, No. 71 West Suzhou Road  
Shanghai  
William Lin  
Tel. +86 13761116539  
E-Mail. william.lin@robelchina.com

### Hong Kong

Plasser Far East Ltd.  
2209, Tower One, Lippo Centre  
89 Queensway, Hong Kong  
Ching-Ling Tjoeng  
Tel. +852 2521 7391  
E-Mail. cltjoeng@plasserfareast.com.hk

### India

Premier India Agencies  
(Prop. Rahul Premier India  
Agencies Pvt. Ltd.)  
"Premier House", Door No. 8-1-112,  
3<sup>rd</sup> Floor  
Vidyanagar, Opp. Ill Town Police Station  
Peda Waltair, Visakhapatnam 530 017 (A.P.)  
Sudhir Kumar Mathur  
Tel. +91 1143523195  
E-Mail. skm@premierindia.org

### Iran

AIRIA Co. Ltd  
Unit 201, No. 76, Vozara Bld,  
151191861 Tehran  
Ali Khalili  
Tel. +98 2188 55 45 22  
E-Mail. office@airiagroup.com

### Israel

Transport Technologies Partnership (Saker-  
Trichter) Ltd  
Ramat Yam St 93,  
Hertsliya 4685193  
Yoram Trichter  
Tel. +972 9 951 60 66  
E-Mail. yoram@transtec.co.il

### Japan

Nippon Plasser K.K.  
1-33-1, Komagome, 1-chome  
Toshima-ku, Tokyo 170-0003  
Heinz Springer  
Tel. +81 3 53956280  
E-Mail. springer@nipponplasser.co.jp

### Saudi Arabia

Riyadh Company for Railway Supply  
Olaya P.O.Box 14089,  
Riyadh 11424  
Eng. Ragaie Sobhy  
Tel. +966 1 217 9633  
E-Mail. ragaie@riyadhestablishment.com

### Thailand

Number One Holding Co Ltd.  
24 Soi Sukhothai Rd.  
Suanjitladda Dusit  
Bankok 10300  
Apinya Chatpimonkul  
Tel. +66 83 2442333  
E-Mail. apinya@numberoneholding.com

### Turkey

LIMPRO Dis Tic. A.S.  
Büyükdere Caddesi  
Levent Loft 201/141  
34394 Istanbul – Sisli  
Yildirim Akdere  
Tel. +90 530 970 6629  
E-Mail. yildirim@limpro.com.tr

### United Arab Emirates

Al Mazroui Trading & General Services  
INFRA Division  
Al Yasat Tower, 7th floor, Abu Dhabi  
Wolfgang Willig  
Tel. +971 56 397 8000  
E-Mail. ww@mazroui.ae

## AUSTRALIA & NEW ZEALAND

### Australia/New Zealand

KH1 Pty. Ltd.  
114 National Blvd, Campbellfield  
Victoria 3061  
Daniel Mociak  
Tel. +61 3 9357 5400  
E-Mail. sales@KH1.com.au



# SYSTEMS & VEHICLES.

**FAST.  
EFFICIENT.  
PROTECTED.**

ROBEL Systems & Vehicles, as well as Service & Support you can find in a separate product catalogue and as an Online-Version on [www.robel.com](http://www.robel.com).

## Systems & Vehicles at a Glance.

Whatever the challenge in track construction, ROBEL has the solution. The ROBEL catalogue for Systems & Vehicles and Service & Support catalogue provides:

- **STANDARD PRODUCTS**
- **CUSTOMER PROJECTS**
- **TAILOR-MADE SOLUTIONS**
- **COMPLETE SERVICE PORTFOLIO OF SERVICE & SUPPORT**

ROBEL is not only manufacturer, but also service partner. This makes sure that the machine works reliably and is available when needed. Downtimes costs money. It is the regular service and maintenance that prolong lifespan and keep the value. That's the prerequisite for efficient and economic rail construction. ROBEL delivers as promised and it's worth its price. So you not only get quality, but also support. Reliable and non-bureaucratic. Use the ROBEL Service offer and thereby the whole potential of your machine.



**ROBEL. MORE THAN MANUFACTURER.  
YOUR 360° SERVICE PARTNER.**



This brochure shows a cross-section of the ROBEL product range. Apart from that, ROBEL supplies a wide variety of work vehicles with trailers, special equipment and stationary machines for work on rails and sleepers.

The pictures and descriptions may relate to additional or tailor-made devices which are not standard versions. The dimensions and TECHNICAL SPECIFICATIONS as well as kind, extent and positions of components and auxiliary equipment shown in this product range are not binding.

Information regarding traveling speed is provided subject to compliance with regulations regarding use such as operation, maintenance and transport and the relevant approval regulations.

We reserve the right to make changes without prior notice. The individual agreement concluded is relevant. ROBEL Bahnbaumaschinen GmbH is an internationally registered trade mark. We reserve our copyrights.





**ROBEL Bahnbaumaschinen GmbH**  
Industriestraße 31  
D-83395 Freilassing  
**T** +49 (0) 8654/609-0  
**F** +49 (0) 8654/609-100  
**E** [info@robel.com](mailto:info@robel.com)  
[www.robel.com](http://www.robel.com)

10.2019