

RESCUE
eDRAULIC

LUKAS
superior equipment for saving lives



LUKAS saves lives ACROSS THE WORLD

LUKAS has been developing hydraulic rescue tools since 1972. We are present across the world and our range of products can help you save lives. That is why we pay great attention to the quality of our tools. "Made in Germany" manufactured LUKAS rescue tools with a special seal of quality, precision and passion, so you can rely upon our technology when rescuing. We are innovative and are constantly finding ways to develop our rescue tools for you. The tools should be light, comfortable and efficient for use in rescue operations.

This is not difficult for LUKAS, a part of the international IDEX Corporation. Thanks to our IDEX Fire & Safety family, we can act globally, exchange international practical knowledge and place high-performance rescue equipment on the global market.

We want to save lives with you!
We are a team!



Superior equipment FOR SAVING LIVES

We were the first manufacturer in the world to develop hydraulic cutters and have over 40 years of experience in manufacturing rescue equipment for global use.

LUKAS rescue equipment is user-friendly, powerful and quick to use. We are a reliable partner whom you can trust. The safety of the rescuers and injured persons is the most important criterion when it comes to developing our equipment.

Our products are intuitive to operate, designed for mobile use and thought out down to the last detail.

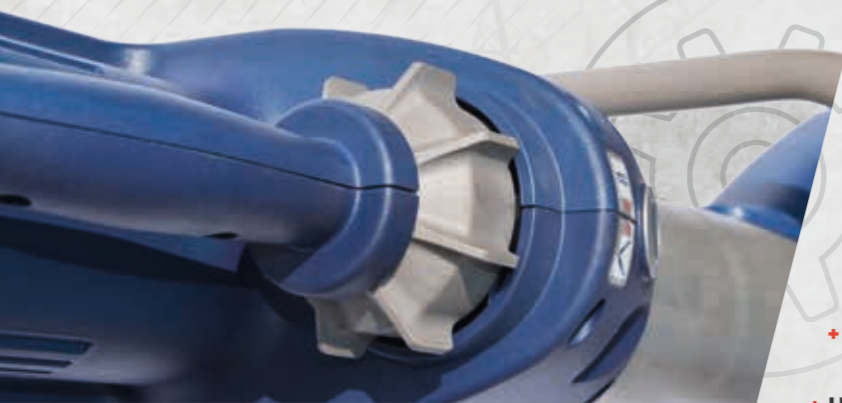
INNOVATION	6
EDRAULIC	8
CUTTERS	10
SPREADERS	12
COMBI TOOLS	14
RESCUE RAMS	16
STRONGARM	18
STRONGARM	20
EQUIPMENT	22

LUKAS – INNOVATIVE RESCUE TOOLS



eDRAULIC

- + NO COMPROMISE ON PERFORMANCE FOR HOSE-CONNECTED TOOLS
- + WORK MADE FASTER AND SAFER
- + LESS SPACE REQUIREMENT IN EMERGENCY VEHICLES
- + UNLIMITED OPERATING RADIUS



STAR GRIP

- + PERMITS FINE CONTROL
- + INTUITIVE TO USE FOR LEFT AND RIGHT-HANDERS
- + THE ABILITY TO WORK PRECISELY KEEPS RESCUERS AND PATIENTS SAFE
- + FOR RESCUERS, WORK IS LESS STRENUOUS AND STRESSFUL
- + HANDLE AND CONTROL CLEARLY SEPERATED



CUTTER GEOMETRY

- + PULLS PERFECTLY INTO POSITION
- + LONG LASTING, RESHARPENABLE
- + SUITABLE FOR FUTURE GENERATIONS OF VEHICLES

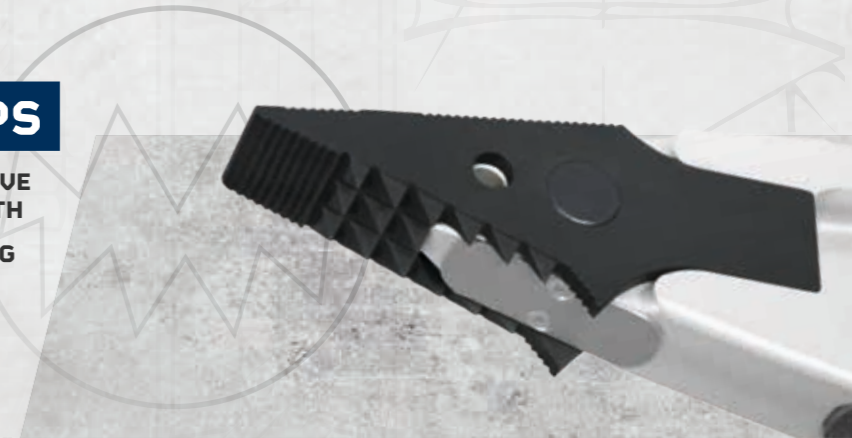
HIGH-PERFORMANCE RESCUE BATTERY

- + SPECIALLY DEVELOPED FOR RESCUE OPERATIONS
- + BATTERY CAN BE CHANGED QUICKLY AND EASILY
- + BATTERY CAN BE CHANGED QUICKLY IN THE DARK THANKS TO AN ILLUMINATED BATTERY COMPARTMENT
- + CHARGING CYCLE COUNTER



„SHARK TOOTH“ TIPS

- + AGGRESSIVE GRIP THANKS TO INNOVATIVE 3-ROW ARRANGEMENT OF THE STEEL TEETH
- + SPREADING, SQUEEZING AND PULLING



CASING

- + THERMAL-PROTECTED
- + HIGHLY DURABLE AND IMPACT RESISTANT
- + FUNCTIONAL RELEVANT COMPONENTS ARE WELL PROTECTED
- + VERY ERGONOMIC PROVIDED BY THE INTEGRAL DESIGN



eDRAULIC

Compact,
more performance –
FASTER TO USE

LUKAS eDRAULIC technology offers you mobility and flexibility and helps you to rescue people without the need for hose-connected power units. Our eDRAULIC rescue tools allow you to react to any situation quickly. The lack of cumbersome hoses reduces the risk of stumbling at the site of the rescue operation. eDRAULIC rescue tools ensure mobility even on rough terrain and in narrow spaces. They can be easily manoeuvred inside the vehicle, which makes them very flexible.

Our high-performance batteries will not let you down in your rescue operation and save space.

LUKAS was the first manufacturer in the world of electro-hydraulic rescue tools and is very proud of its eDRAULIC technology, which is the technology of the future.



eDRAULIC – CUTTERS

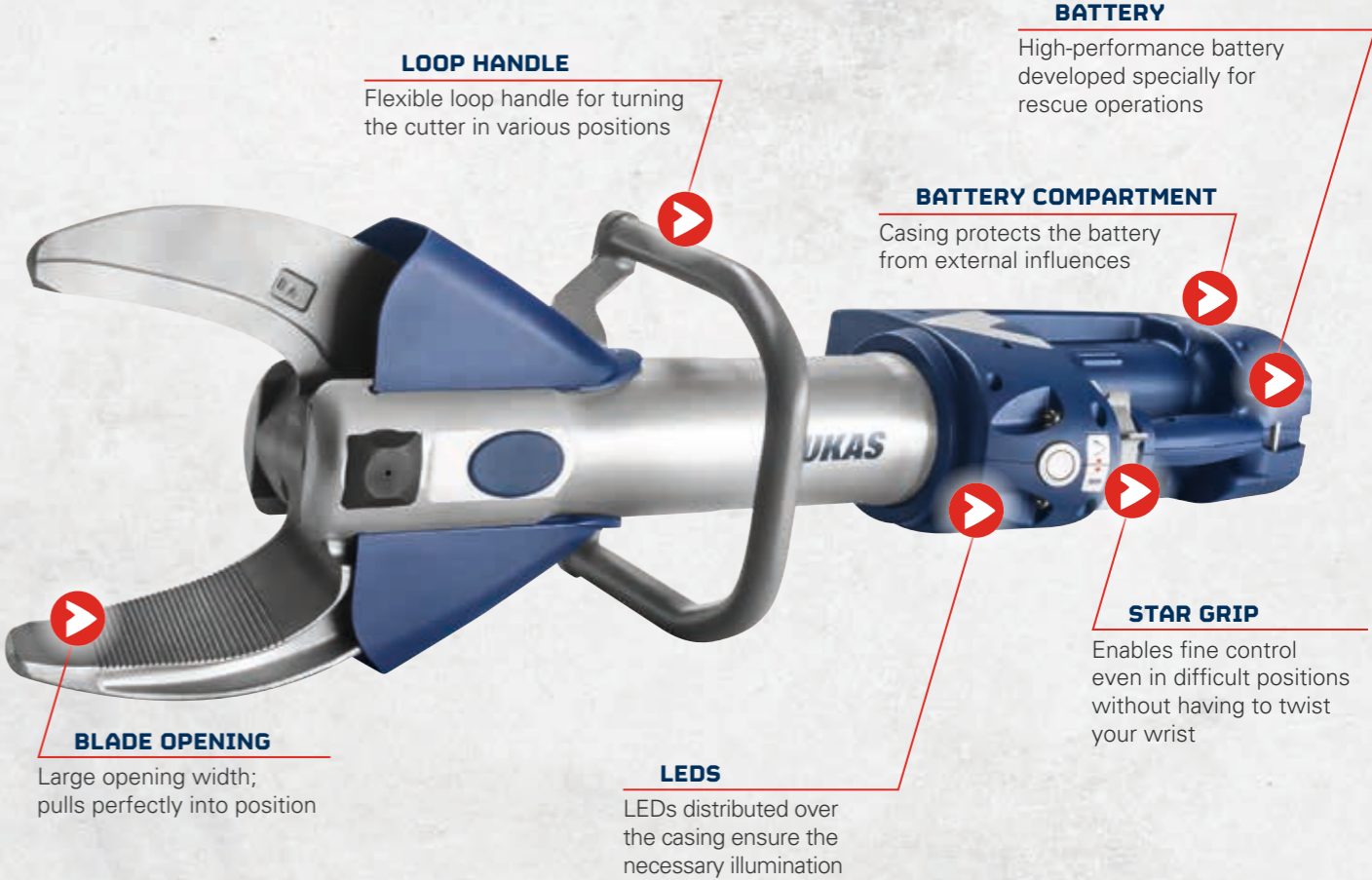
S 788 E2 / S 377 E2 / S 312 E2



COMPACT, FLEXIBLE,
POWERFUL

	S 788 E2	S 377 E2	S 312 E2
Cutting force up to ¹⁾	247,515 lbf. / 1,101 kN	146,133 lbf. / 650 kN	152,900 lbf. / 680 kN
Round steel up to ø ²⁾	1.65 in. / 42 mm	1.30 in. / 33 mm	1.38 in. / 35 mm
Blade opening	7.87 in. / 200 mm	8.11 in. / 206 mm	6.3 in. / 160 mm
Dimensions ³⁾	38.9 x 10.5 x 11.1 in. 988 x 266 x 281 mm	36.8 x 9.33 x 11.1 in. 934 x 237 x 281 mm	35.6 x 9.3 x 11.1 in. 905 x 237 x 281 mm
Weight ⁴⁾	50.04 lbs. / 22.7 kg	42.6 lbs. / 19.3 kg	40.8 lbs. / 18.5 kg
NFPA classes	A8/B9/C8/D9/E9	A7/B8/C7/B7/E8	A7/B8/C7/D7/E7
EN cutting class	K	I	I
EN cutting performance	1K – 2K – 3K – 4K – 5K	1I – 2J – 3I – 4J – 5J	1I – 2I – 3I – 4J – 5J
Protection class	IP 54	IP 54	IP 54

¹⁾ theoretic ²⁾ according to EN 13204; NFPA 1936 ³⁾ l x w x h ⁴⁾ weight closed; w/o battery



eDRAULIC – SPREADERS

SP 777 E2 / SP 555 E2 / SP 333 E2



	SP 777 E2	SP 555 E2	SP 333 E2
Spreading force	14,160 – 134,900 lbf. 63 – 600 kN	11,690 – 147,924 lbf. 52 – 658 kN	9,442 – 187,940 lbf. 42 – 836 kN
Spreading distance	32.0 in./813 mm	28.7 in./730 mm	23.6 in./600 mm
Squeezing force up to	27,400 lbf./122 kN	25,900 lbf./115 kN	32,500 lbf./144 kN
Pulling force up to	13,490 lbf./60 kN	13,039 lbf./58 kN	12,589 lbf./56 kN
Pulling distance	25.8 in./655 mm	22.4 in./569 mm	17.3 in./440 mm
Dimensions ¹⁾	42.5 x 12.2 x 11.2 in. 1,080 x 309 x 285 mm	39.4 x 10.4 x 11.0 in. 1,002 x 265 x 280 mm	35.6 x 10.0 x 11.2 in. 905 x 255 x 285 mm
Weight ²⁾	52.0 lbs./23.6 kg	44.1 lbs./20.0 kg	38.1 lbs./17.3 kg
Protection class	IP 54	IP 54	IP 54

¹⁾ l x w x h ²⁾ closed; w/o battery



SPREADING, SQUEEZING AND PULLING –
WHEN EVERY SECOND COUNTS

FLAT POINTS

Extra-flat points for narrow gap sizes

SHARK-TOOTH TIPS

Shark-tooth tips with aggressive grip for all kinds of operations

FITTING RAILS

Optional universal fitting rails for three additional lights

LOOP HANDLE

Flexible loop handle for turning the spreader in various positions



eDRAULIC – COMBI TOOLS

SC 757 E2 / SC 358 E2 / SC 258 E2



	SC 757 E2	SC 358 E2	SC 258 E2
Cutting force up to	198,000 lbf. / 880 kN	110,600 lbf. / 492 kN	63,000 lbf. / 280 kN
Round steel up to ø ¹⁾	1.5 in. / 38 mm	1.38 in. / 35 mm	1.02 in. / 26 mm
Spreading force up to	292,000 lbf. / 1,300 kN	337,230 lbf. / 1,500 kN	157,000 lbf. / 700 kN
Spreading force 25 mm from tips end	9,220 lbf. / 41 kN	8,543 lbf. / 38 kN	7200 lbf. / 32 kN
Spreading distance	17.7 in / 450 mm	14.5 in. / 368 mm	12.6 in. / 321 mm
Pulling force up to	22,000 lbf. / 98 kN	13,714 lbf. / 61 kN	7640 lbf. / 34 kN
Pulling distance	11.7 in / 297 mm	15 in. / 382 mm	13 in. / 330 mm
Dimensions ²⁾	40.7 x 11.6 x 11.2 in 1,033 x 294 x 285 mm	37.7 x 9.3 x 10.9 in 956 x 237 x 278 mm	34.4 x 8.5 x 11.1 in 874 x 215 x 281 mm
Weight ³⁾	52.9 lbs 24.0 kg	41.4 lbs / 18.8 kg	32.6 lbs. / 14.9 kg
NFPA classes	A8/B9/C8/D9/E9	A7/B8/C7/D8/E7	A6/B6/C6/D7/E7
EN cutting class	J	I	F
EN cutting performance	1J – 2K – 3J – 4K – 5K	1I – 2J – 3I – 4J – 5J	1G – 2F – 3F – 4F – 5G
Protection class	IP 54	IP 54	IP 54

¹⁾ according to EN 13204; NFPA 1936 ²⁾ l x w x h ³⁾ closed; w/o battery

CUTTING
AND SPREADING
WITHOUT
CHANGING TOOLS

1 SHARK-TOOTH TIPS

Shark-tooth tips with aggressive grip for all kinds of operations

2 CUTTER

Entire cut length thanks to removable “shark-tooth tips”

3 LOOP HANDLE

Flexible loop handle for turning the combi tool in various positions

4 LEDs

LEDs distributed over the casing ensure the necessary illumination

5 STAR GRIP

Enables comfortable control even in difficult positions without having to twist your wrist

6 BATTERY COMPARTMENT

Casing protects the battery from external influences

7 BATTERY

High-performance battery developed specially for rescue operations



Removable “Shark-tooth tips”



eDRAULIC – RESCUE RAMS

R 421 E2 / R 411 E2

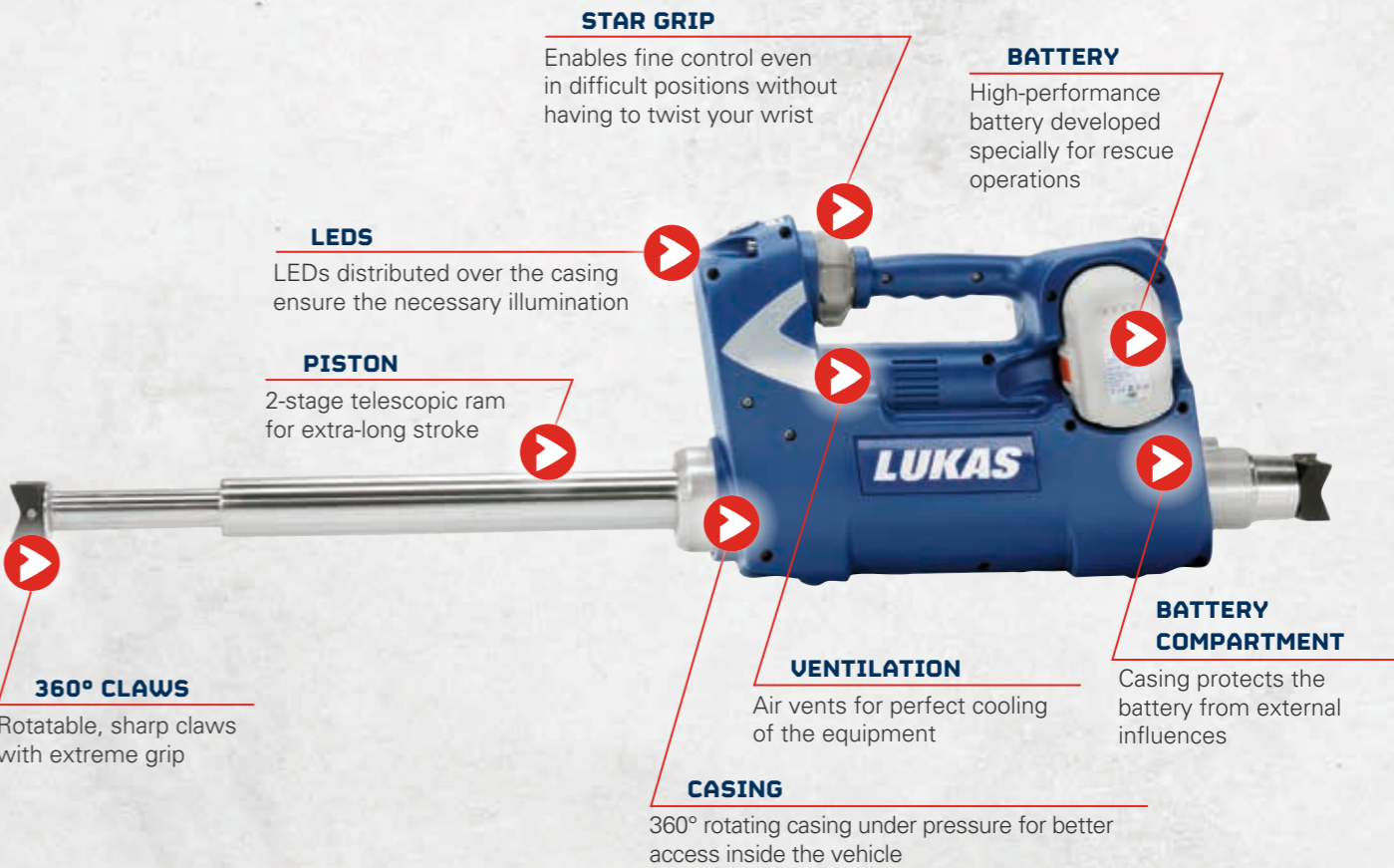


	R 421 E2	R 411 E2
Total lift	29.5 in./750 mm	–
Piston 1 lift	15.2 in./387 mm	15.2 in./387 mm
Piston 1 lifting force	28,600 lbf./127 kN	28,600 lbf./127 kN
Piston 2 lift	14.3 in./363 mm	–
Piston 2 lifting force	13,500 lbf./60 kN	–
Retracted length	23.5 in./597 mm	23.5 in./597 mm
Extended length	53.0 in./1,347 mm	38.7 in./984 mm
Dimensions ¹⁾	23.5 × 5.31 × 12.3 in. 597 × 135 × 313 mm	23.5 × 5.31 × 12.3 in. 597 × 135 × 313 mm
Weight ²⁾	41.9 lbs/19.0 kg	37.3 lbs/16.9 kg
Protection class	IP 54	IP 54

¹⁾ l × w × h ²⁾ closed; w/o battery



LARGE LIFT,
MINIMAL SIZE





QUICKLY OVERCOME obstacles

Every operation requires real concentration and perfect equipment. To allow you to overcome all obstacles in the way of a fast rescue, LUKAS has developed a universal tool to provide reliable, high-performance support every time you need it. The StrongArm can open doors and gates, cut chains, locks and bars and lift or push away obstacles.

Whether you are spreading, lifting or cutting, the StrongArm can be used flexibly in any rescue scenario.





	E 100	LE 100
Cutting force up to	34,845 lbf. / 155 kN	34,845 lbf. / 155 kN
Round steel up to ¹⁾	0.87 in. / 22.2 mm	0.87 in. / 22.2 mm
Blade opening with combi tips	8.5 in. / 215 mm	8.5 in. / 215 mm
Spreading force	6,300 – 157,000 lbf 28 – 700 kN	6,300 – 157,000 lbf 28 – 700 kN
Spreading distance with door opener tips	7.3 in. / 184 mm	7.3 in. / 184 mm
Spreading distance with combi tips	8.5 in. / 215 mm	8.5 in. / 215 mm
Dimensions with combi tips ²⁾	31.3 x 7.7 x 8.3 in. 796 x 195 x 210 mm	31.3 x 7.7 x 8.3 in. 796 x 195 x 210 mm
Weight ³⁾	21.6 lbs / 9.8 kg	21.6 lbs / 9.8 kg
NFPA-Classes	A5/B3/C5/D6/E6	A5/B3/C5/D6/E6
EN cutting performance	1E – 2D – 3D – 4D – 5D	1E – 2D – 3D – 4D – 5D

¹⁾ according to EN 13204; NFPA 1936 ²⁾ l x w x h ³⁾ without battery and tips



MULTI-TOOL WITH INNUMERABLE APPLICATIONS



Opening

Cutting

Spreading

FITTING RAILS

Universal fitting rails for lighting, etc.

BATTERY

High-performance battery developed specially for rescue operations

LOOP HANDLE

Flexible loop handle for turning the StrongArm in various positions

CHANGING ATTACHMENTS

Easy to change attachments thanks to large locking knobs

STAR GRIP

Enables fine control even in difficult positions without having to twist your wrist

ROBUST CASING

Specially made for use at high temperatures thanks to heat-resistant casing

ACCESSORIES

eDRAULIC TOOLS



eDRAULIC SPREADER

eDRAULIC RESCUE RAMS



COMBI TOOLS



STRONGARM



THE IDEX FIRE & SAFETY FAMILY is always there for you!



LUKAS



HURST
JAWS OF LIFE



GODIVA



AKRON
BRASS COMPANY



WELDON
A DIVISION OF AKRON BRASS

What do you need for your rescue operations?

Let us know, we'll be glad to advise you.

LUKAS Hydraulik GmbH

A Unit of IDEX Corporation
Weinstraße 39
91058 Erlangen
Germany

Fon: +49 9131 698-0
Fax: +49 9131 698-394
E-Mail: lukas.info@idexcorp.com

www.lukas.com